

Navigation Closures

*for Inland Waterway
Users Board 69*

Jeffrey McKee

Chief, Navigation Branch

August 13, 2013



®

US Army Corps of Engineers
BUILDING STRONG®



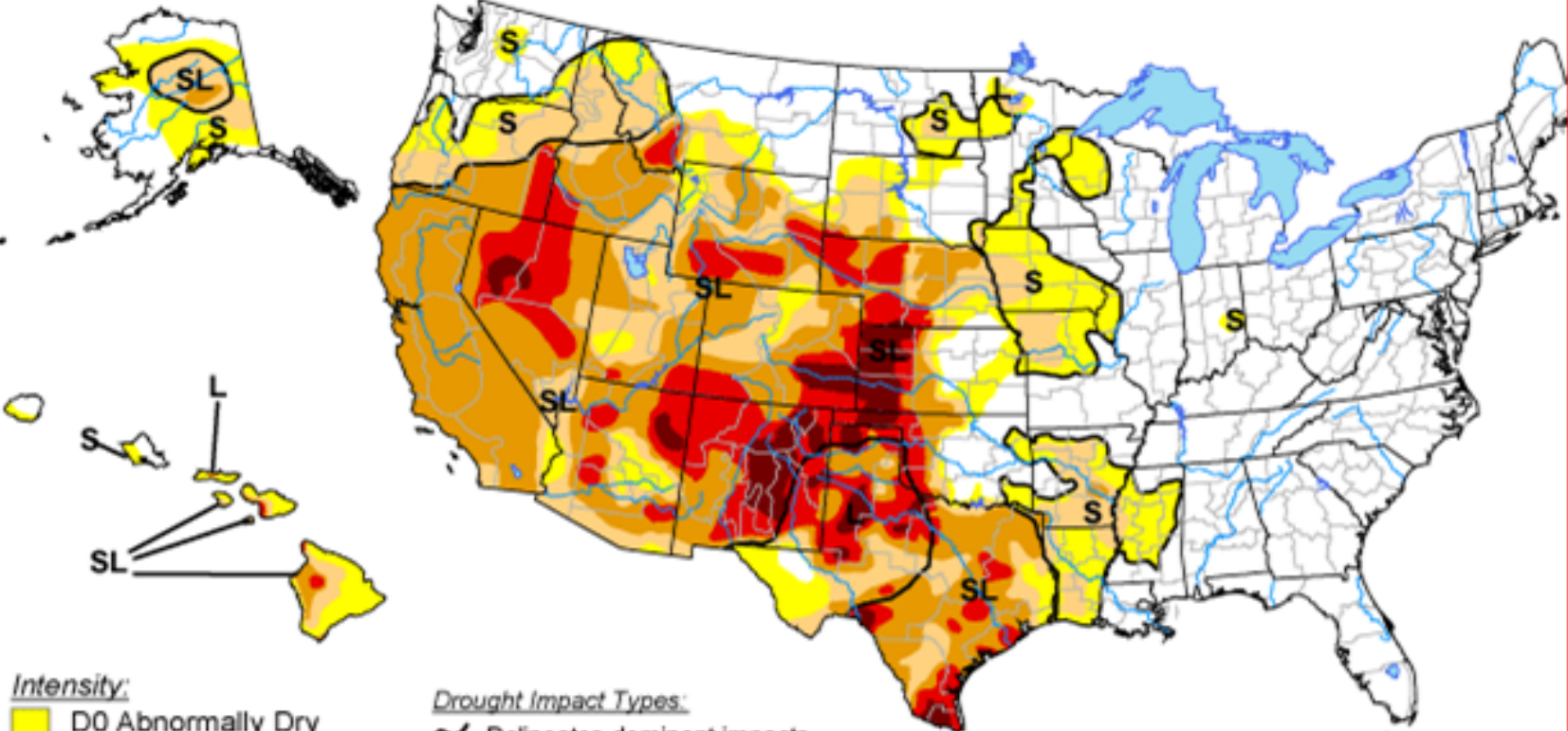
2012 – 2013 Drought

- Close to one-half of the continental United States continues to be affected by an ongoing, persistent drought with impacts ranging from moderate to exceptional conditions. This drought has affected communities, fresh water supplies, agriculture, livestock, and water-dependent commerce.
- USACE is continuing its efforts within existing authorities to mitigate the drought's effects in its management of water resources to ensure its projects continue to fulfill their multiple authorized purposes, to include navigation, water supply, recreation, and environmental purposes.
- The impact of the drought is not only being felt along the nation's rivers. All of the Great Lakes are below long-term averages for this time of year and forecasts call for continued below-average lake levels.
- USACE continues to work aggressively and proactively nationwide to maintain operable navigation channels and ensure the critical flow of waterborne commerce continues. Preventive and immediate actions include: accelerated dredging, structural measures, strategic management of water releases from USACE reservoirs, routinely scheduled surveys, and close collaboration with channel users and the Coast Guard on river conditions and navigation aids.



U.S. Drought Monitor

August 6, 2013
Valid 7 a.m. EDT



- Intensity:**
- D0 Abnormally Dry
 - D1 Drought - Moderate
 - D2 Drought - Severe
 - D3 Drought - Extreme
 - D4 Drought - Exceptional

- Drought Impact Types:**
- ~ Delineates dominant impacts
 - S = Short-Term, typically <6 months (e.g. agriculture, grasslands)
 - L = Long-Term, typically >6 months (e.g. hydrology, ecology)

The Drought Monitor focuses on broad-scale conditions. Local conditions may vary. See accompanying text summary for forecast statements.

<http://droughtmonitor.unl.edu/>

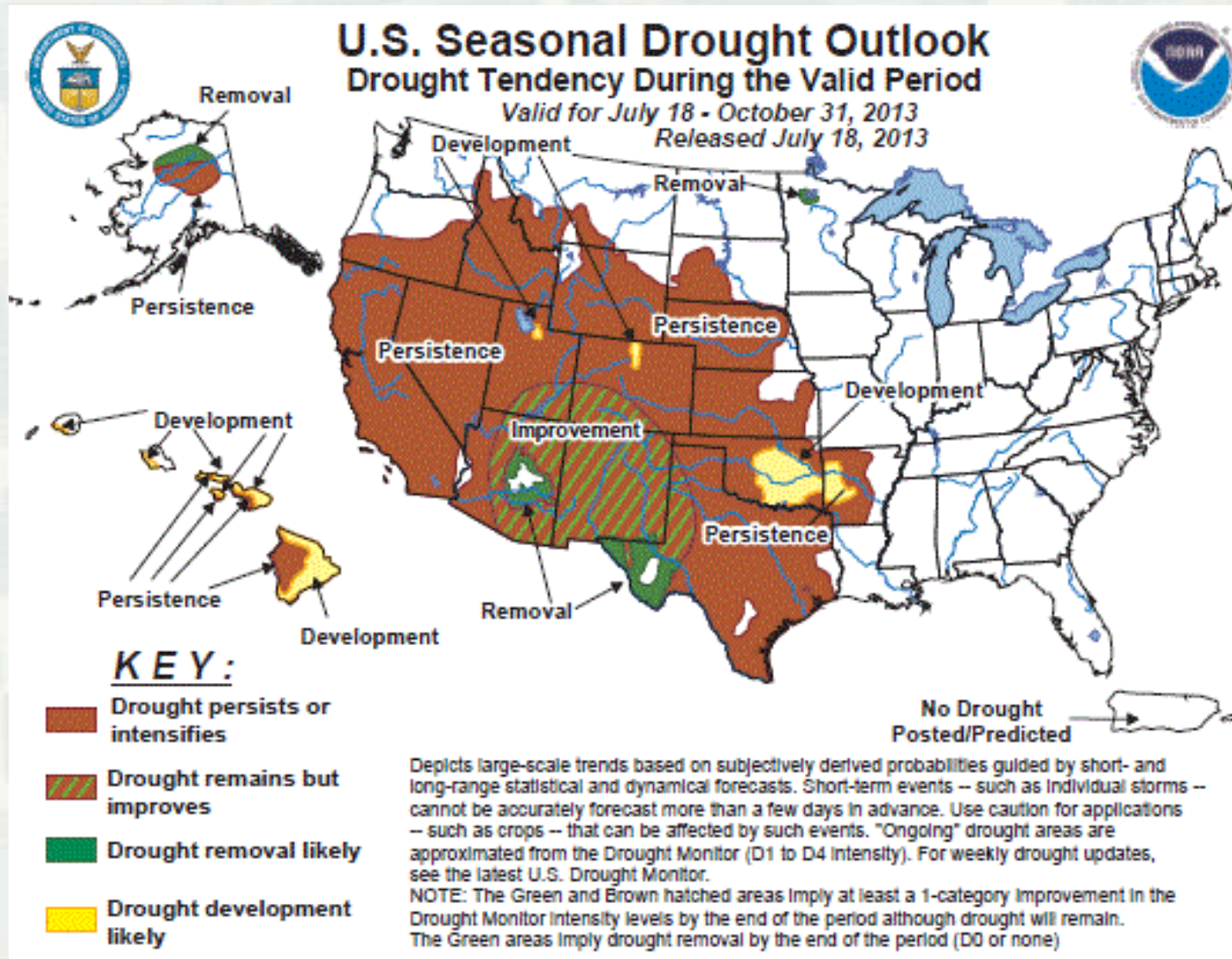


Released Thursday, August 8, 2013
Author: Brian Fuchs, National Drought Mitigation Center



Seasonal Drought Outlook

18 July 2013 – 31 October 2013



Summary

- The Missouri Basin shows improvement in drought conditions over the next three months.
- The Ohio and Mississippi River Basins are not impacted by drought.
- The summer monsoon season in the Desert Southwest is expected to have a positive impact on the water situation in the Southwest, particularly over Arizona and New Mexico.



BUILDING STRONG®

Great Lakes Projects Requiring Dredging due to Water Levels Below Low Water Datum (LWD)



Marseilles Dam – Illinois Waterway



Dam Status:

- Dam currently appears stable
- Structural assessments are ongoing. Total extent of damage unknown at this time.
- Cost estimates for repairs continue to be refined; current funds on hand are below.

Dam Repair Status:

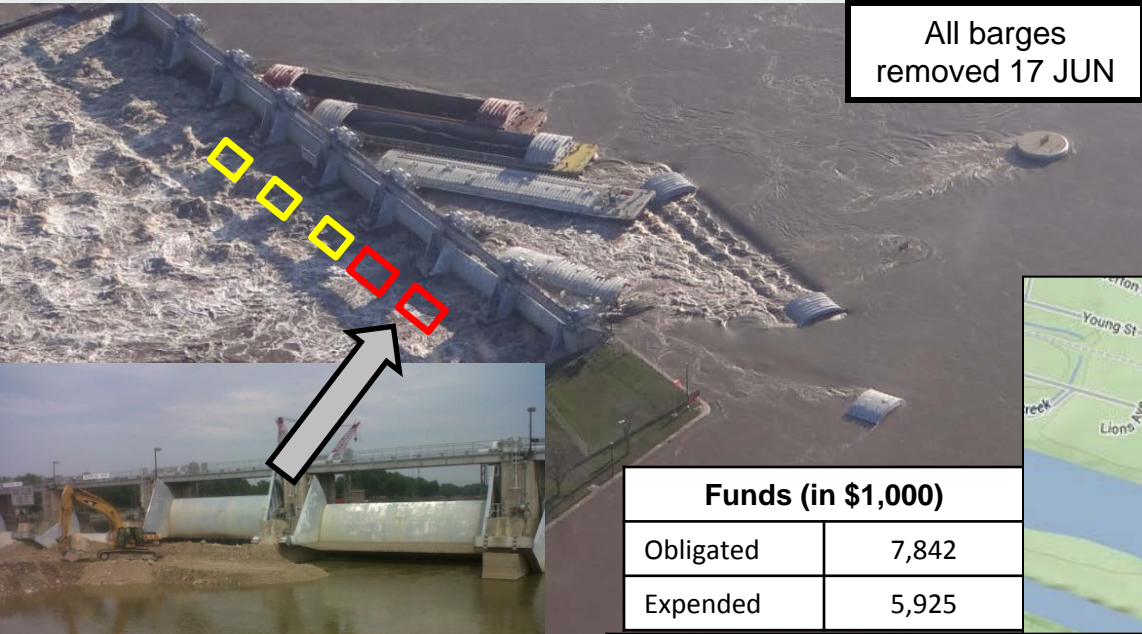
- Bulkheads for inoperable gates (bays 2 & 3) installed 27 JUN
- Temporary Trunion Anchors for pier 2 have been fabricated and installed 1 AUG
- Damage assessments are ongoing and design is underway for permanent repairs

Rock Dike Status:

- Estimated final cost: \$6M (build and degrade)
- Rock Dike construction began on 30 APR
 - Completed 15 MAY
 - Deconstruction started 27 JUN
- Pool returned to normal levels on 15 MAY

Impacts / Risks:

- Estimated Navigation impacts: \$19.7M to date
- Value to nation - \$10B cargo locked through Marseilles in 2011.
- Navigation ceased with drawdown on 11 MAY 13; navigation resumed 15 MAY 13
- Increased risk of flooding in Marseilles during repair operations Residents advised of risk 21 MAY



Funds (in \$1,000)	
Obligated	7,842
Expended	5,925



Rock dike being de-constructed; Rock work platform for temporary trunion anchor installation is complete

Gates 2, 3 are broken;
Gates 4-6 are partially functional;
Gates 1, 7 & 8 are fully functional

Algiers Lock Gate Repairs

Update



- Gate failed due to metal fatigue on March 27, 2013.
- Scope of Work: Structural modifications and improvements to all four steel sector gates, both River and Canal end. Installation of new seals, replacement of steel that exhibits corrosion, and blasting and painting of gates.
- Repairs completed and Lock began passing traffic on July 17, 2013. complete.
- Issues: Lock will be closed from August 12 to 23 from 7:00 – 5:00 for guidewall and dolphin repairs on canal end.

Cost Info

- Est. Total Cost: Algiers Lock Gate Repairs - \$5.2M
- Items deferred to fund Algiers Lock Repairs include:
 - IHNC crane rehab which is considered essential at \$1.8M
 - IHNC gate machinery, IHNC PLC
 - Leland, Bowman, and Calcasieu Locks hired labor guidewall repairs
 - Port Allen Lock forebay dredging and possibly New Orleans Harbor forebay dredging.

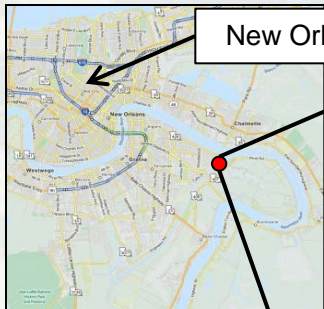


BUILDING STRONG®

New Orleans, LA

Mississippi River

Algiers Lock

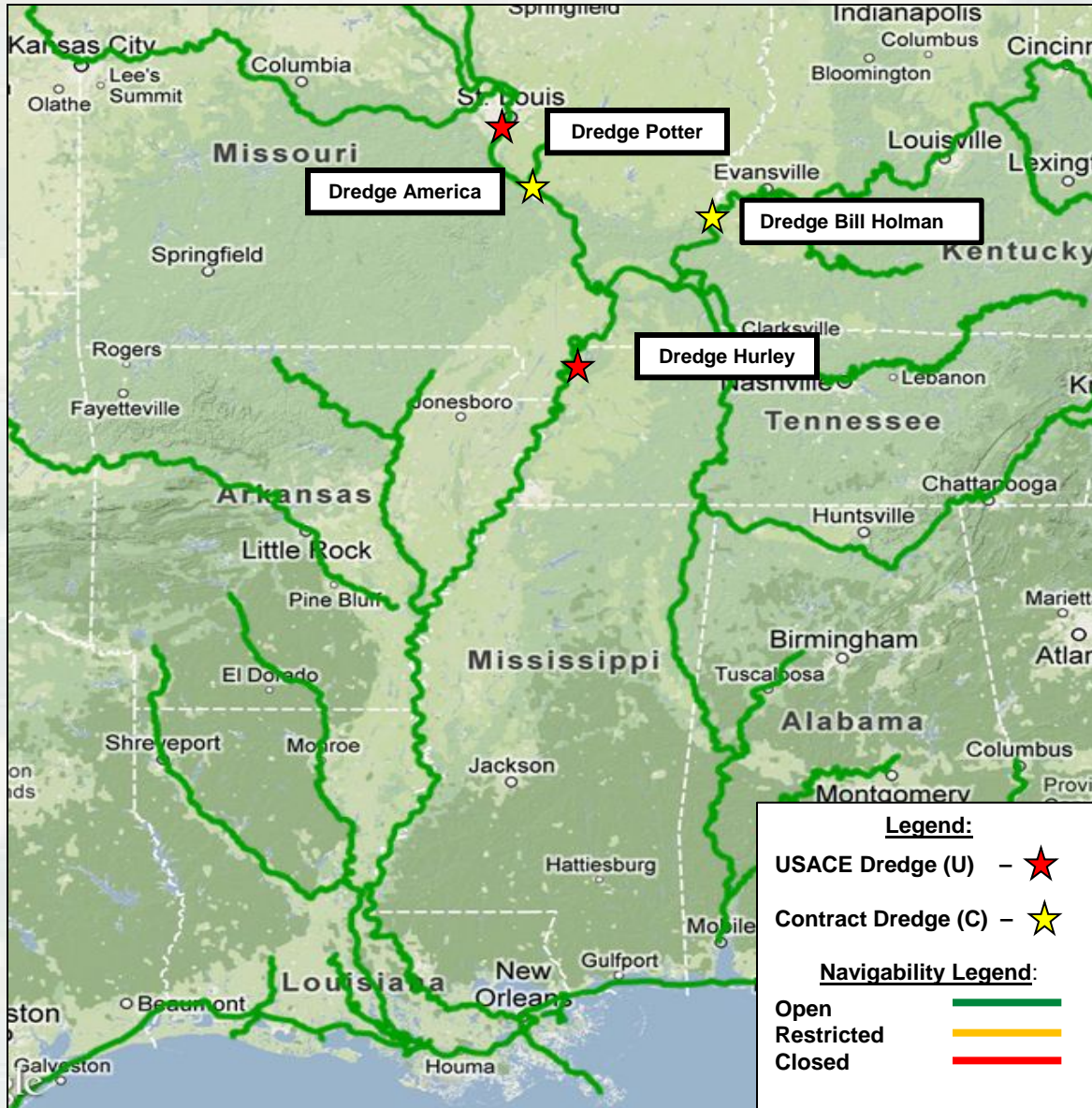


GIWW

- Levee failure along GIWW, miles 256 to 272, near Panama City, FL, due to high rain runoff on July 4.
- Dredging commenced on July 17 and was completed on July 30 and reopened to traffic.



Dredging Operations



Low Water Dredging Operations:

1. The Potter (U) remains at the St. Louis District Service Base 177 UMR for future drought-related dredging.
2. The America (C) is at Kaskaskia River 117 UMR for future drought-related dredging.
3. The Dustpan Dredge Hurley (U) is dredging at Redman Bar (Lower MS River Mile 740).
4. The Bill Holman (C) is performing channel maintenance dredging on the lower Ohio River. Sediment at the mouth of the Wabash River (OMR 848) may pose navigation restrictions as the Ohio River falls.

Summary:

- 4 dredges are currently available for low water-related dredging along the Upper Mississippi River between St. Louis, MO, and Cairo, IL.
 - 2 USACE Dredges
 - 2 Contract Dredge

