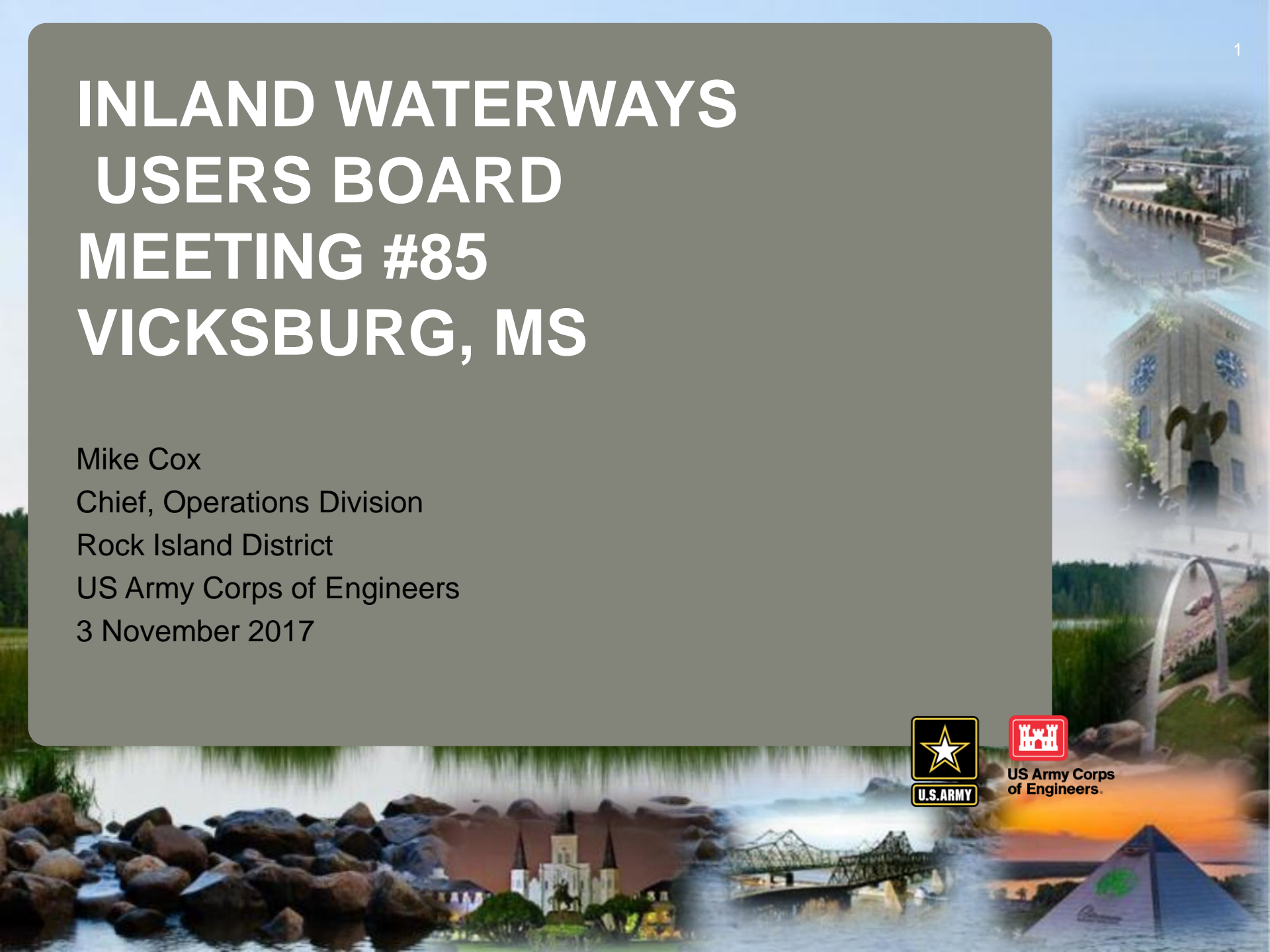


# INLAND WATERWAYS USERS BOARD MEETING #85 VICKSBURG, MS

Mike Cox  
Chief, Operations Division  
Rock Island District  
US Army Corps of Engineers  
3 November 2017



US Army Corps  
of Engineers.





US Army Corps  
of Engineers.



Planned IWW 2020 Consolidated Closure schedule

6/28/201  
updated 7

| Location       | Q3FY17 | Q4FY17 | Q1FY18 | Q2FY18 | Q3FY18 | Q4FY18 | Q1FY19 | Q2FY19 | Q3FY19 | Q4FY19 | Q1FY20 | Q2FY20 | Q3FY20 | Q4FY20 | Q1FY21 | Q2FY21 | Q3FY21 | Q4FY21 | Q1FY22 | Q2FY22 | Q3FY22 | Q4FY22 | Q1FY23 | Q2FY23 | Q3FY23 | Q4FY23 |        |
|----------------|--------|--------|--------|--------|--------|--------|--------|--------|--------|--------|--------|--------|--------|--------|--------|--------|--------|--------|--------|--------|--------|--------|--------|--------|--------|--------|--------|
| Brandon Road   |        |        |        |        |        |        |        |        |        |        |        |        |        | 75     | 15     | 30     |        |        |        |        |        |        |        |        |        |        | 90-120 |
| Dresden Island |        |        |        |        |        |        |        |        |        |        |        |        |        | 75     | 15     | 30     |        |        |        |        |        |        |        |        |        |        | 90-120 |
| Marseilles     |        |        |        |        |        |        |        |        | 75     | 15     | 30     |        |        | 90-120 |        |        |        |        |        |        |        |        |        |        |        |        |        |
| Starved Rock   |        | 90     |        |        |        | 90     |        |        | 75     | 15     | 30     |        |        | 120    |        |        |        |        |        |        |        |        |        |        |        |        |        |
| Peoria         |        |        |        |        |        |        |        |        |        |        |        |        |        | 60     |        |        |        |        |        |        |        |        |        |        |        |        |        |
| LaGrange       |        | 90     |        |        |        |        |        |        |        |        |        |        |        | 120    |        |        |        |        |        |        |        |        |        |        |        |        |        |

|                 |
|-----------------|
| Open            |
| Partial Closure |
| Full Closure    |

Closed during the day (typically 8-10 hours), and pass traffic at night. Typically partial closures also include width/length restrictions.

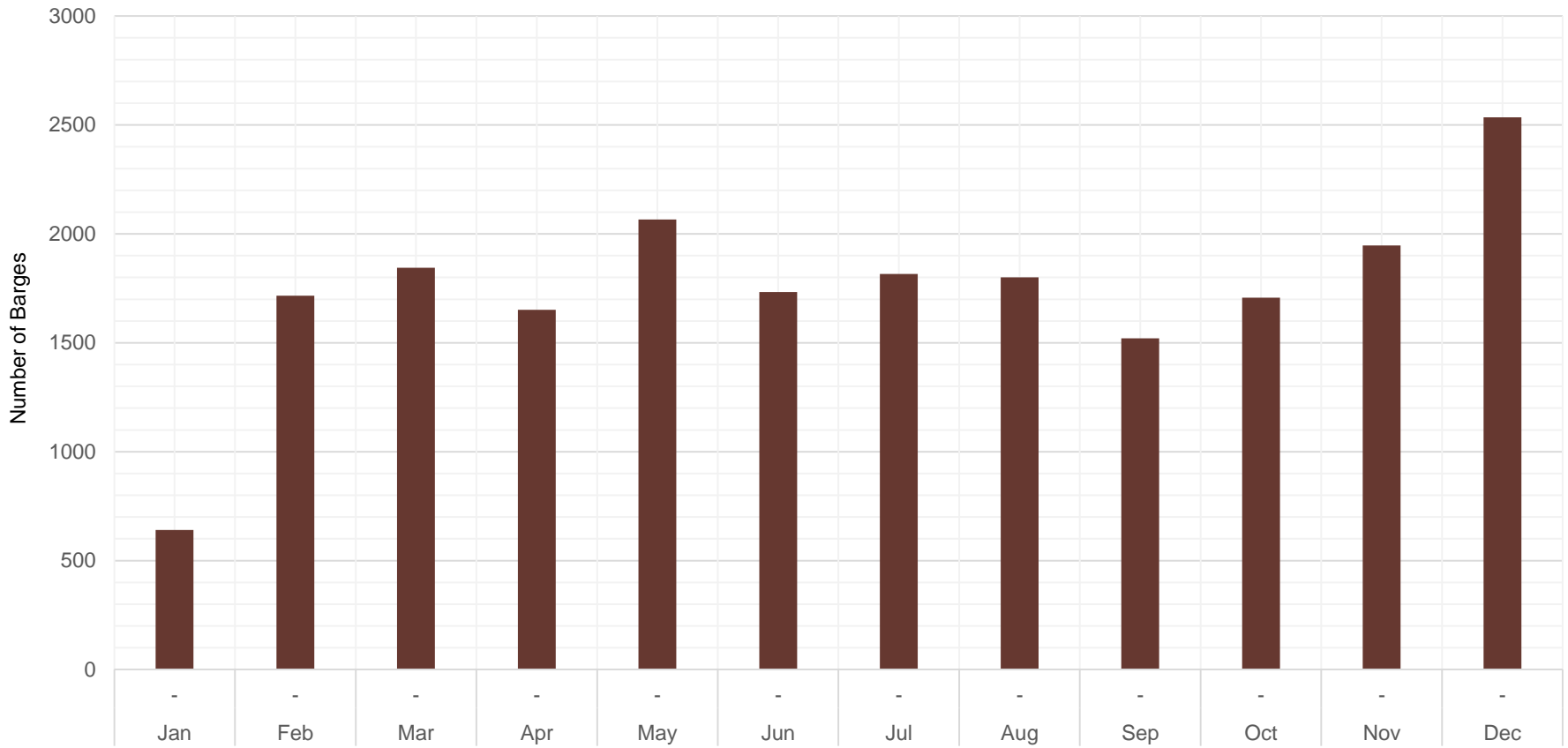
No ability to pass traffic.



**US Army Corps of Engineers.**



## LaGrange (Rock Island - MVR) 2012 to 2016



**US Army Corps  
of Engineers.**



Risk-informed scheduling:

- Hydraulic analysis

- Barge transit trends through harvest season

- Impacts to navigation industry

- Impacts to contractor

- Impacts to USACE

2020 Closure schedule July – October (up to 120 days)

Contractor capability

USACE regional capability

Thorough Program Management ongoing since early FY 16

Critical needs to execute these closures:

- Commitment from USACE, local, regional and national

- New Start

- Continuing Contract Authority

- Adequate funding for FY 18 contract award

We are positioned for MR/MM contract award in mid-FY 18



US Army Corps  
of Engineers.

