

Olmsted Locks & Dam

IWTF Projects Update
Inland Waterways Users Board
Meeting No. 86

MR. DEWEY RISSLER, PE, PMP
PROJECT MANAGER
Olmsted Division
Louisville District

01 Mar 2018



"The views, opinions and findings contained in this report are those of the authors(s) and should not be construed as an official Department of the Army position, policy or decision, unless so designated by other official documentation."

BUILDING STRONG[®]
and Taking Care of People!



US Army Corps
of Engineers[®]



U.S. ARMY

Olmsted

Bottom Line Up Front

✓ Current Schedule: **Ahead of Schedule**

- 2018 (Project Operational) vs. 2022 (80% certainty)
- 2022 (Project Complete) vs. 2026 (80% certainty)

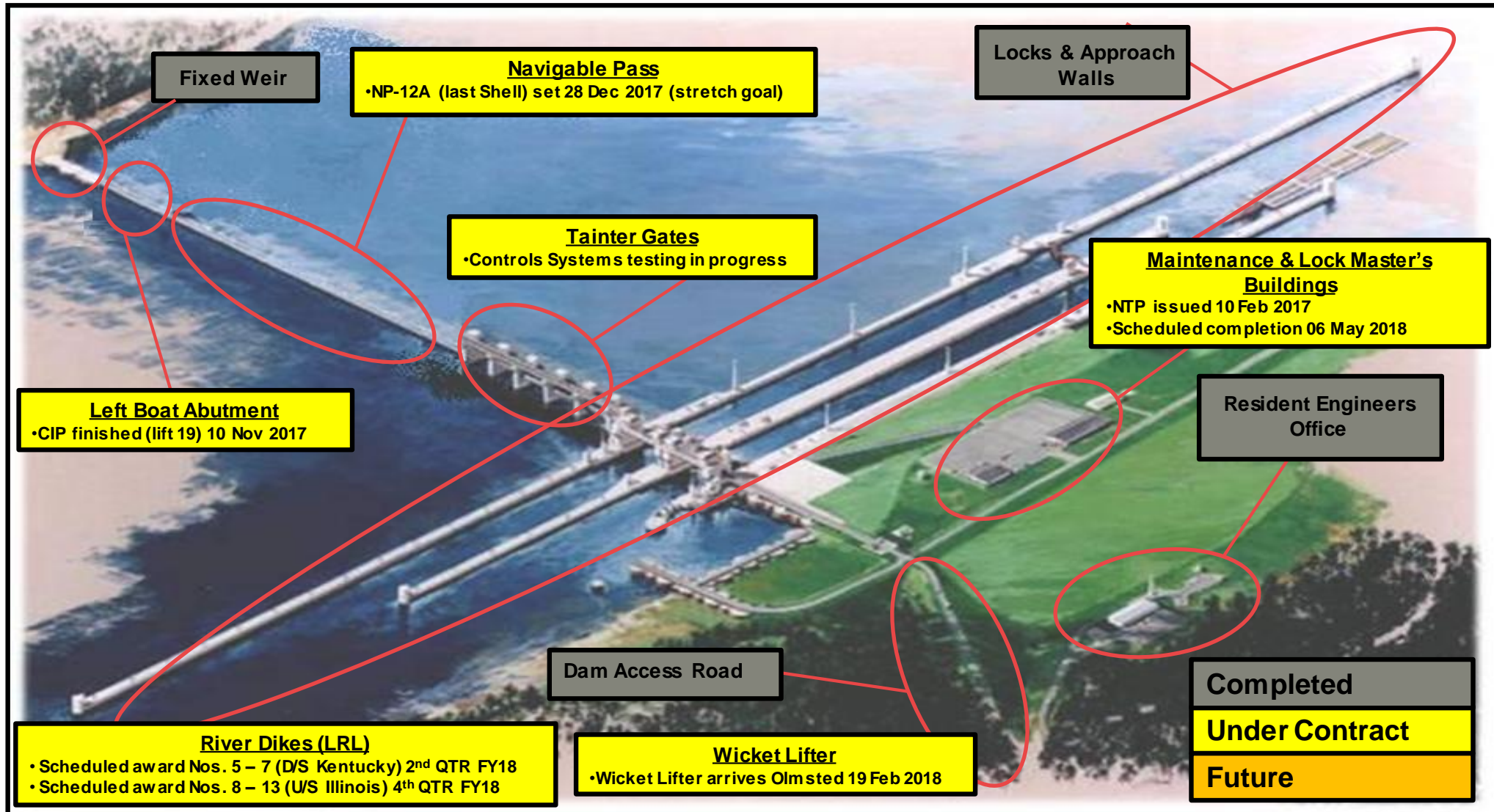
✓ Current Cost: **Under Budget**

- TEP (Total Estimated Price) = \$2.771B vs. \$3.1B (80% certainty)
- Savings = \$329M (FY19 Request = \$35M “Funds to Completion”)

✓ Keys:

1. Efficient funding (annual capability) has allowed the PDT to effectively plan and execute our annual work plan.
2. Advantageous river conditions have allowed the work to expand beyond the contractual low water season (15 Jun – 30 Nov).

Olmsted Project Overview - Status



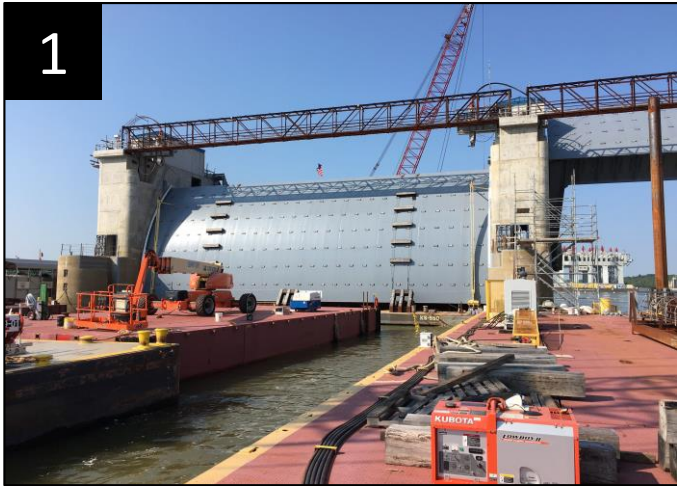
BUILDING STRONG[®]
and Taking Care of People!



US Army Corps of Engineers



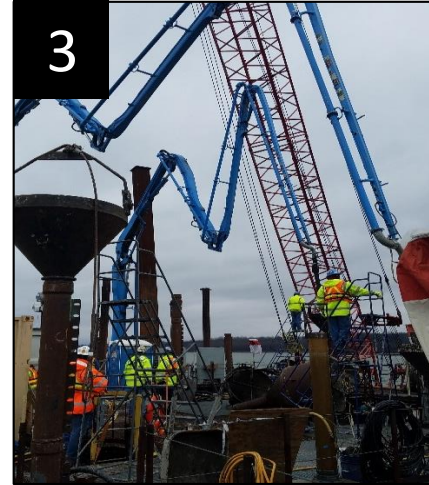
Olmsted Status Photos



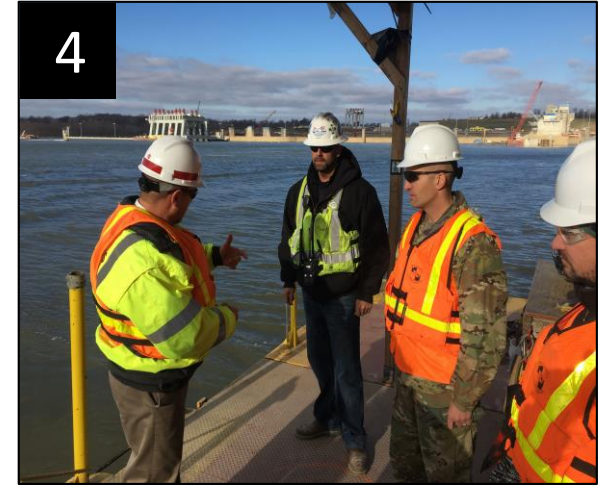
Tainter Gate 5 Install



NP-12A Set



NP-12A Tremie



COL Kremer Visit



Service Mound Buildings



Left Boat Abutment

BUILDING STRONG[®]
and Taking Care of People!

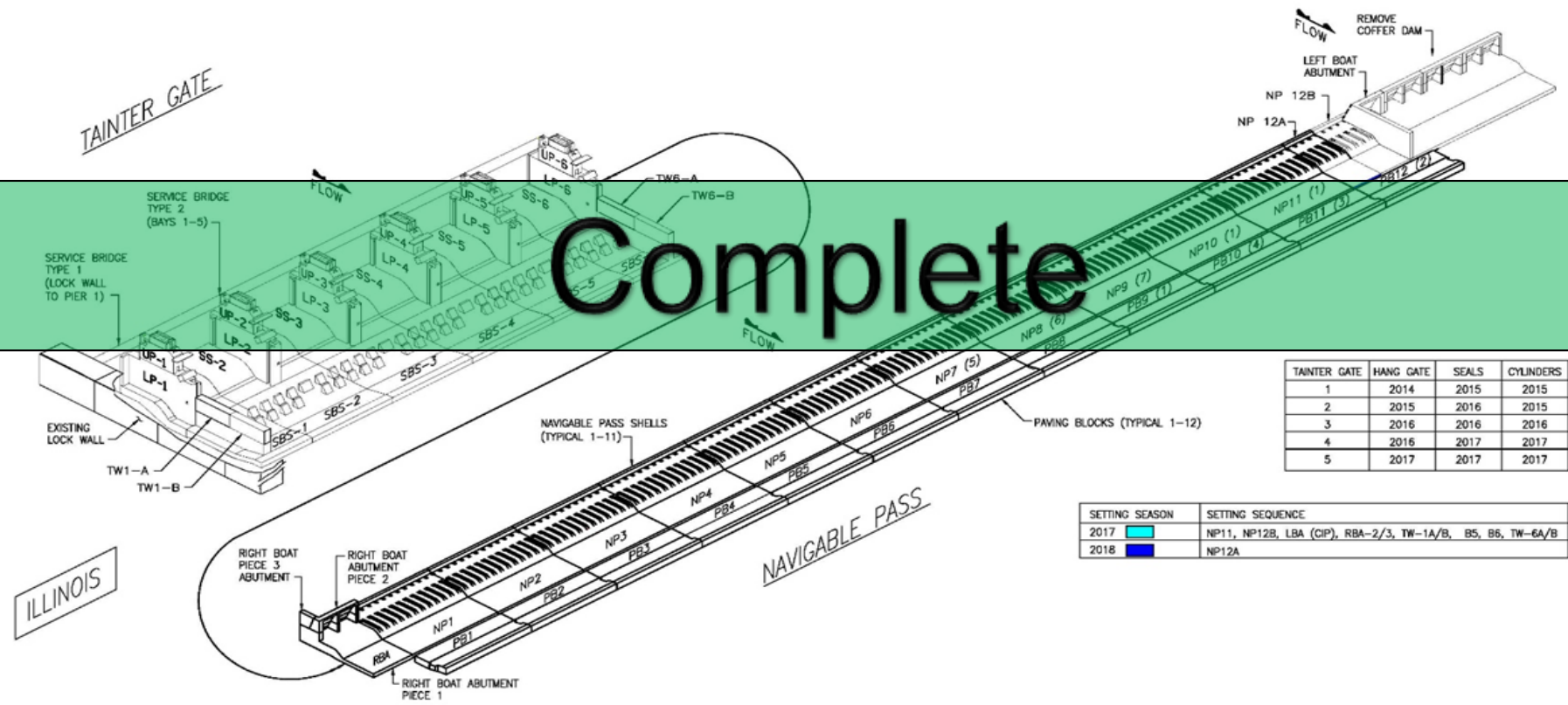
2017 Plan-to-Complete

RINGER BARGE PLACEMENTS	
SHELL	WEIGHT (TONS)

CAT BARGE PLACEMENTS	
SHELL	WEIGHT (TONS)

SHELL SETTING ISOMETRIC

KENTUCKY



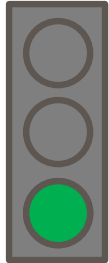
Tainter Gate	Hang Gate	Seals	Cylinders
1	2014	2015	2015
2	2015	2016	2015
3	2016	2016	2016
4	2016	2017	2017
5	2017	2017	2017

Setting Season	Setting Sequence
2017	NP11, NP12B, LBA (CIP), RBA-2/3, TW-1A/B, BS, B6, TW-6A/B
2018	NP12A

BUILDING STRONG[®]
and Taking Care of People!



Olmsted Project Time and Cost Scorecard



Expenditures (thru Dec)

Planned (BCWS)	\$2.296B
Earned (BCWP)	\$2.667B
Actual (ACWP)	\$2.482B

BCWP: Reports the value (based on % complete) of the work performed to date.

Target:

Actual as compared to Planned: (<1% = Green) (>1%and <3% = Yellow) and (>3% = Red)

Schedule (thru Dec)

	(PACR)/(Current)
Project Complete	April 2026/Mar 2022
Dam Operational	Oct 2022/Oct 2018

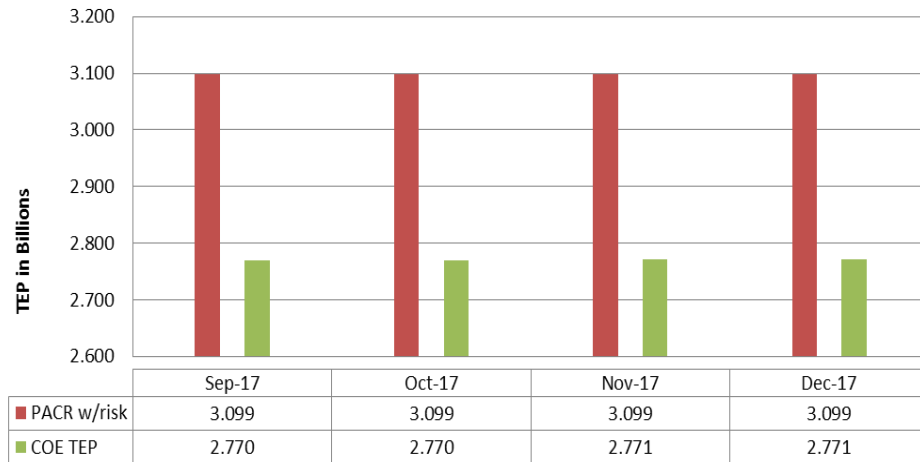
Measures: Planned project completion and Dam contract operational dates

Target:

Green: Current = PACR-12 months
Yellow: Current = PACR-11 months to PACR-7 months
Red: Current = PACR-6 months to after PACR date



Budget (thru Dec)



Major Activity Schedule

Activity	Baseline	Current
Receive Wicket Lifter Keen	14 Feb 2018	19 Feb 2018
Award River Dike Nos. 5 – 7	28 Feb 2018	13 Feb 2018
Issue PCN 998 Settlement	31 Mar 2018	31 Mar 2018
Receive Certified Cost Update	01 Apr 2018	01 Apr 2018
Complete Service Buildings	06 May 2018	06 May 2018

BUILDING STRONG[®]
and Taking Care of People!

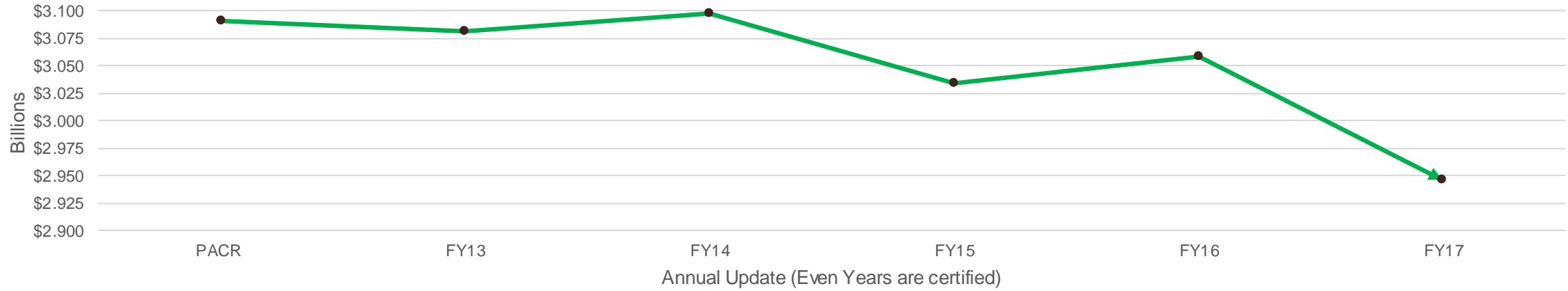


US Army Corps of Engineers

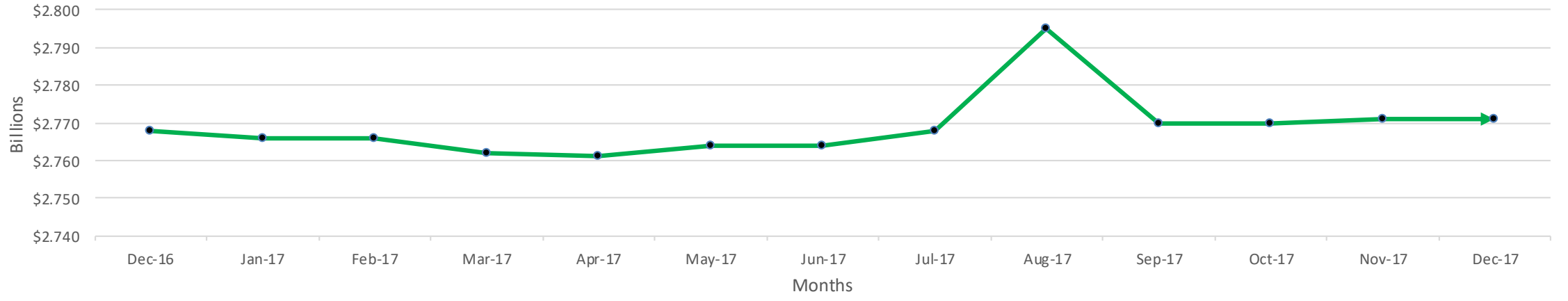


12 Month & 5 Year Cost Trends

TPCS (Last 5 Years)



TEP (Last 12 Months)



BUILDING STRONG[®]
and Taking Care of People!



US Army Corps
of Engineers



Olmsted Finishing Strong

- ✓ Equipment Disposition
 - In excess of \$150M (original acquisition value) and over 10,000 discrete items
 - Opportunity to reduce cost and offset future programming
 - Pursuing Waiver (Direct Sale Authority) and Agency Notification (GSA Screening Exemption) to **maximize efficiency and increase ROI**
 - Good support from GSA to navigate “default” FAR disposition process

- ✓ “Out Year” Marine Work Packages
 - Miter Gate Repairs and Culvert Flushing underway (River Chamber complete)
 - Upstream Mooring Cells (4) construction/Partial L&D 53 demolition in LWS 18 pending
 - River Dike Nos. 8 – 13 installation requires establishment of an Olmsted “pool”

- ✓ Functional Transition
 - Contingency COA to hold pool prior to 1 Oct 2018 predicated on upon sufficient operational performance testing/training (requires river elevation between 290 & 300)

Discussion



Army Strong
Building Strong
Finishing Strong

BUILDING STRONG[®]
and Taking Care of People!

