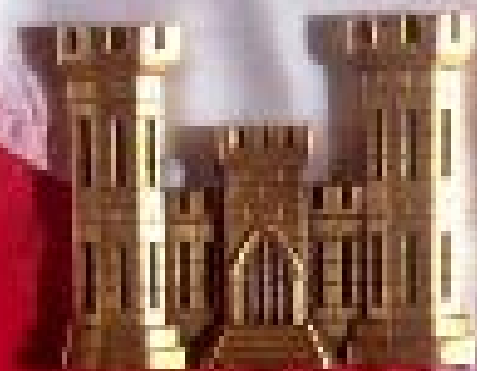


*PRESENTATION
AT*

National Dredging Meeting Washington DC



BY

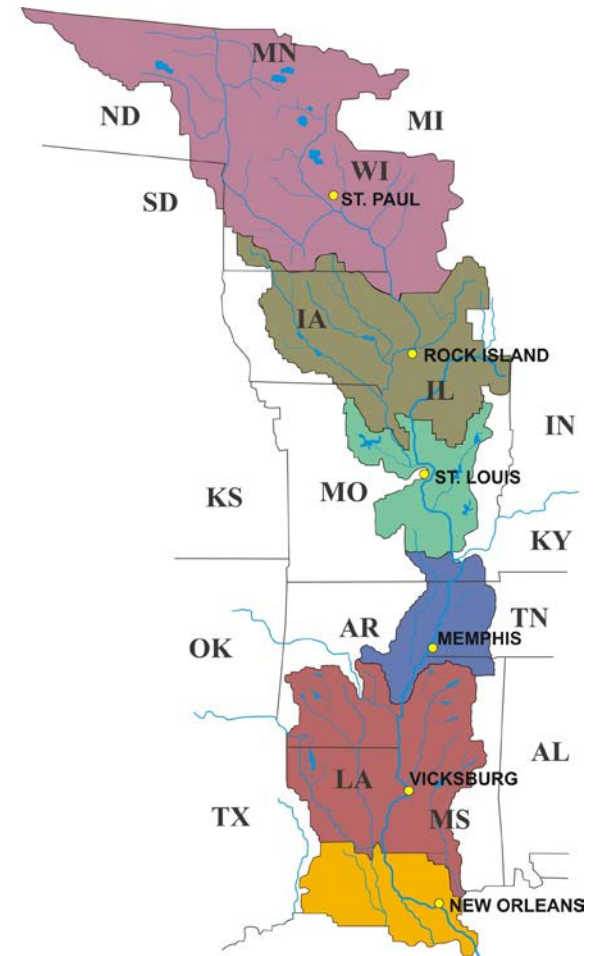
STEVE JONES

MISSISSIPPI VALLEY DIVISION

JUNE 14, 2006



Mississippi Valley Division



- 5,196 miles of Commercial Waterways
- 62 Locks & Dams
- 7 Deep Draft Harbors
- 51 Shallow Draft Harbors
- 8300 miles of Levees
- 44 flood control lakes/reservoirs



US Army Corps
of Engineers®
Mississippi Valley Division



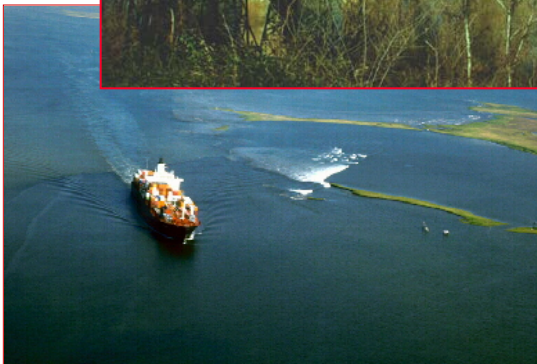
Navigation System



Annual Tonnage - 500 million



Transportation Savings - \$2.7 million



Export/Import Value - \$50 billion



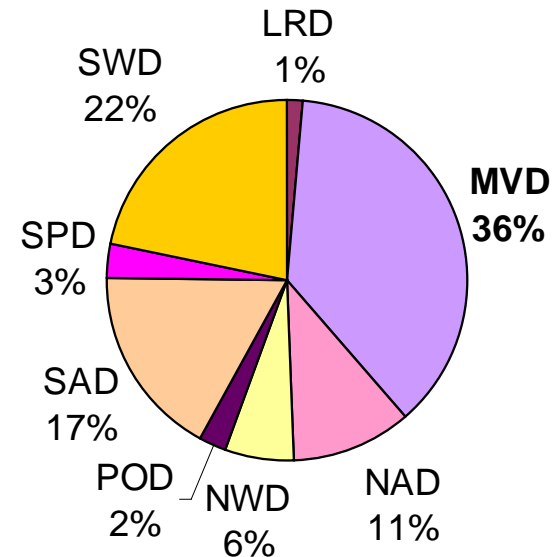
2004 Dredging Statistics



Total US – 274M Cubic Yards

MVD - 102M Cubic Yards

QUANTITY DREDGED - 2003



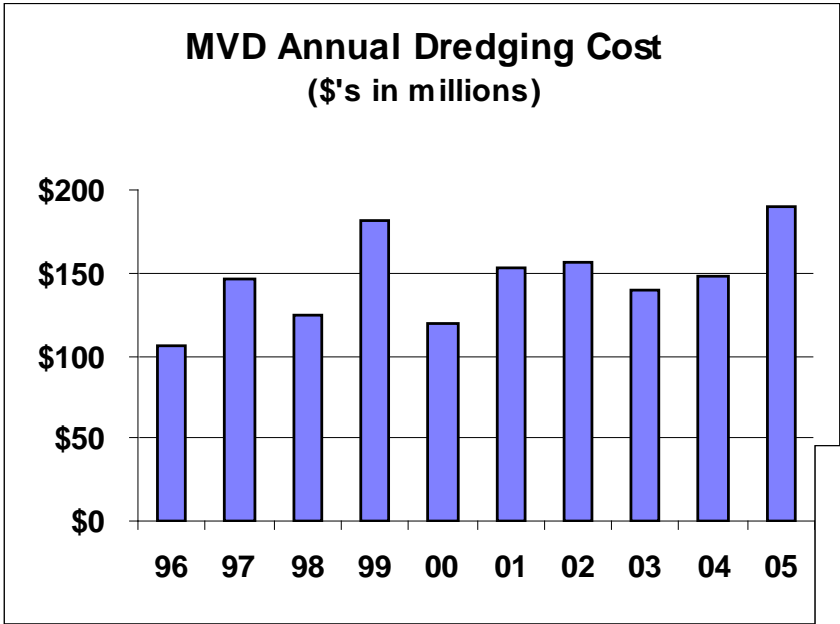
Total US – \$903 Million

MVD – \$147Million

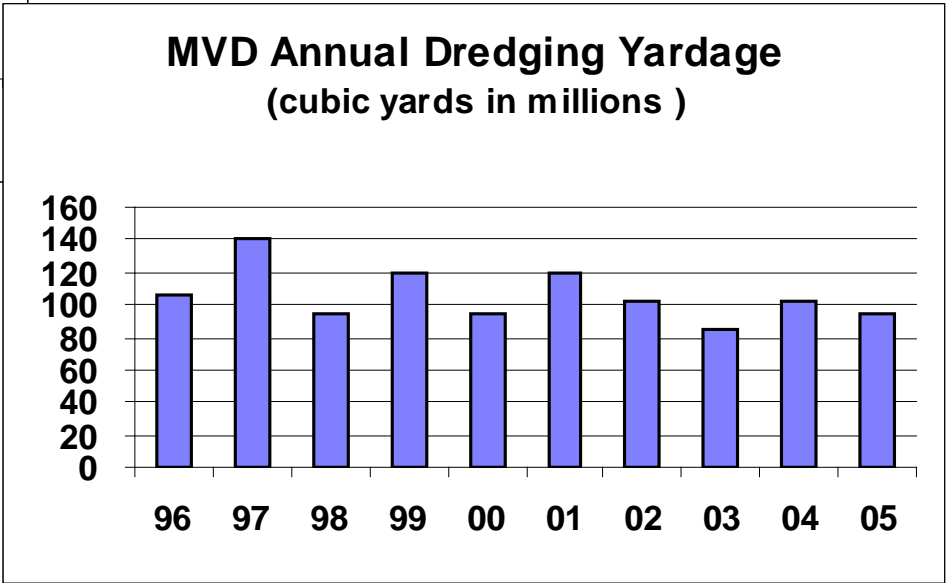


Dredging Statistics

Average Yardage
110 million



Average Cost
\$130 million





Current Initiatives

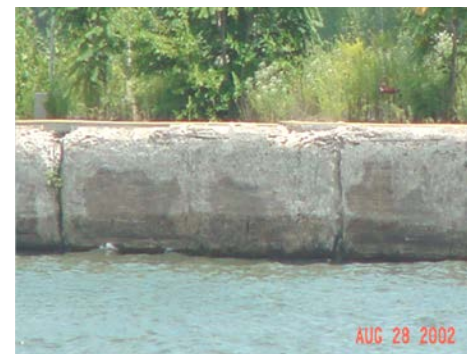
- **Risk and Reliability w/ LRD**
- ~~Backlog~~ **Maintenance Prioritization**
- **Regional Hired Labor and Service Bases**
- **Stoplogs and Slots**
- **Value Engineering - Revetment Operation**
- **Quality Management Plans**
- **Regional Sediment Management in DMMP's**
- **Gulf Coast Joint Hurricane Team**
- **Waterways Action Plans**



US Army Corps
of Engineers®
Mississippi Valley Division



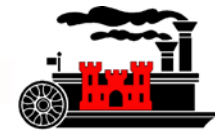
Risk & Reliability Initial Focus



Corps Serving The Army and The Nation



US Army Corps
of Engineers®
Mississippi Valley Division



Risk & Reliability *GIWW Focus*



Corps Serving The Army and The Nation



MVD Prioritized Maintenance - Weighted Parameters

1. LD 27 - Replace Lift Gate Leaves – IWTF - \$1,088K
2. LD 27 - Rehabilitate Culvert Valves – IWTF - \$2,010K
3. LD 18 - Dam Concrete Repairs - \$2,195K
4. LD 3 - Outdraft Correction – IWTF - \$2,000K
5. LD 21 - Miter Gate Replacement - \$3,700K.
6. LD 3 - WI Embankments Rehabilitation – IWTF - \$12,000K
7. LD 27 – Rehabilitate Lock Chamber Culvert Valve Machinery – IWTF - \$2,750K
8. Lockport - Approach Dike Repairs - \$6,859K
9. LD 11 - Stage III Dam Rehabilitation – IWTF - \$13,343K
10. LD 11 - Stage II Lock Rehabilitation – IWTF - \$2,180K
11. KRNP - Repair / Replace Bulkheads - \$200K
12. LD 27 - Replace Brake Linings for Lock Equipment - \$450K
13. LD7 & LD10 - Bulkhead Slots - \$5,000K
14. LD 27 - Replace Miter Gate Anchorage - \$1,000K
15. LD21 & LD22 - Bulkhead Slots - \$2,600K
16. LD Mel Price - Replace Miter Gate Strut - \$870K
17. LD 27 - Miter Gate Replacement - \$2,500K
18. LD 11, 12 & 13 - Repair or Replace Emergency Gates - \$5,680K
19. LD 27 - Concrete Repairs - \$200K
20. LD Mel Price - Rehabilitate Miter Gate Cylinders - \$467K



US Army Corps
of Engineers®
Mississippi Valley Division



Stakeholder Coordination

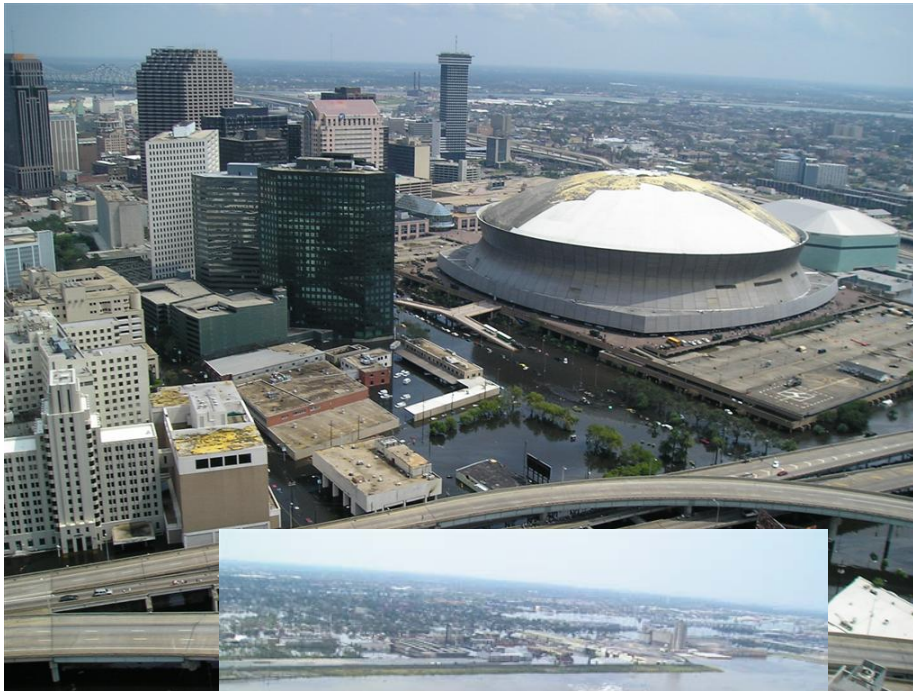
5-year Plans



The Corps Serving The Army and The Nation



Katrina



- ◆ Mississippi River, GIWW Closed
- ◆ Over 400 Barges Stranded
- ◆ Locks and Bridges Inoperable
- ◆ Communication Challenges



Recovery

◆ Mississippi River

- ◆ 12' – 30 Aug
- ◆ 30' – 1 Sept
- ◆ 35' – 2 Sept
- ◆ 39' – 5 Sept
- ◆ 45' – 11 Sept

◆ GIWW

- ◆ Via Baptiste Collette – 6 Sept





US Army Corps
of Engineers®
Mississippi Valley Division



Post Katrina Readiness



The Corps Serving The Army and The Nation



US Army Corps
of Engineers®
Mississippi Valley Division



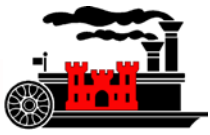
Waterways Action Plans



The Corps Serving The Army and The Nation



US Army Corps
of Engineers®
Mississippi Valley Division



Questions?