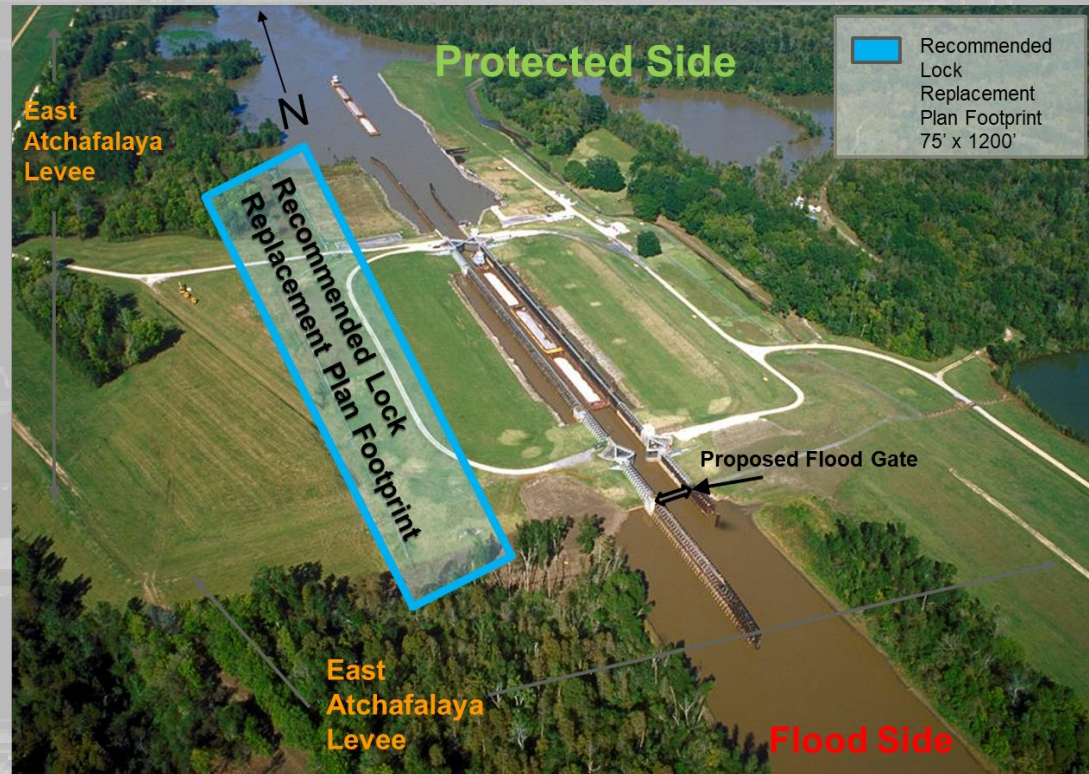


STATUS OF BAYOU SORREL LOCK RE-STUDY

Ms. Sarah Bradley
MVN Senior Project Manager
U.S. Army Corps of Engineers
15 December 2021



* Drawing is not to scale

World-Class Delivery... Real-World Impact!



US Army Corps
of Engineers®



PROJECT ISSUES AND CHALLENGES

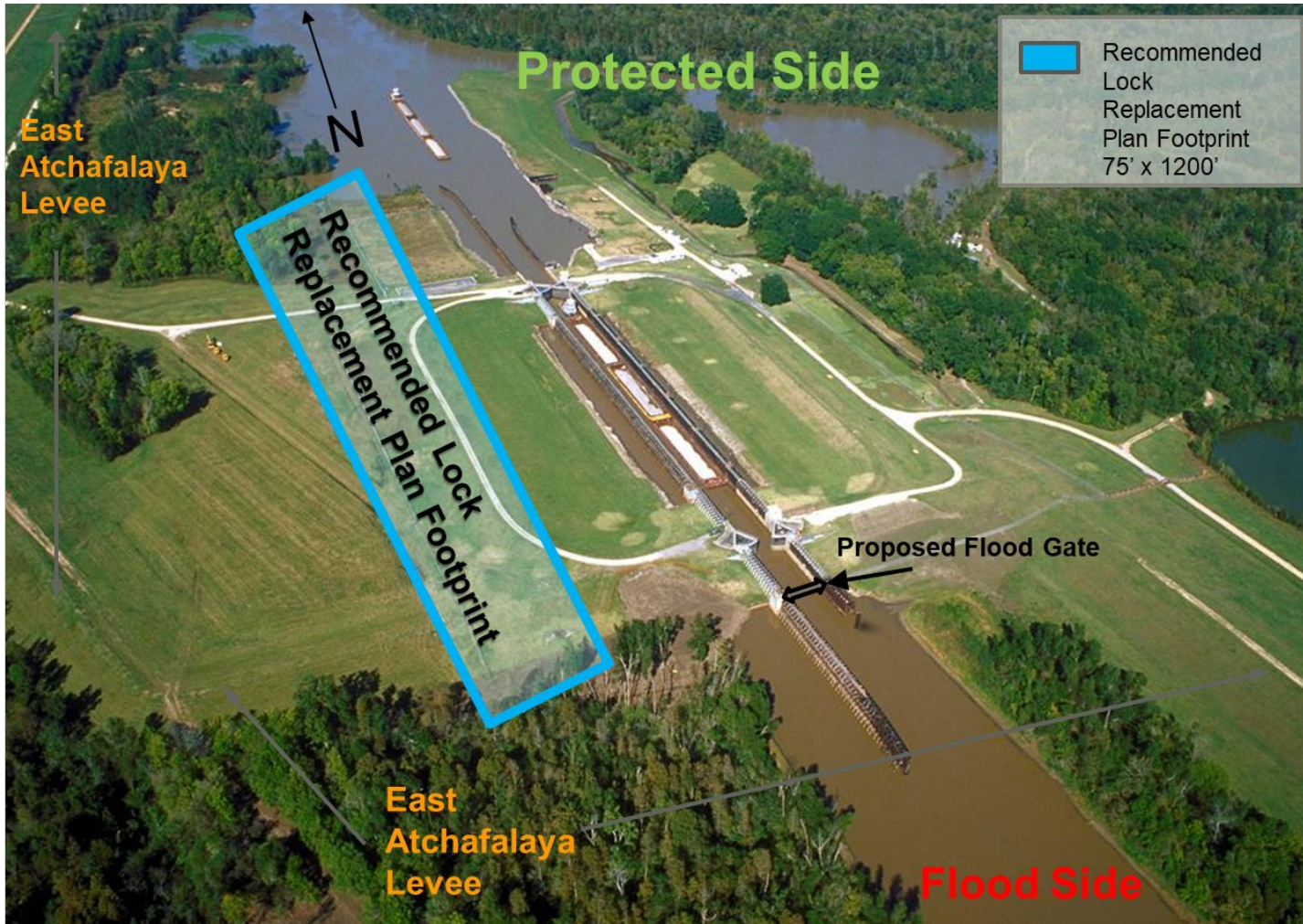


- Project authorized for construction in WRDA 2007 at a cost of \$9.6M.
 - 75' x 1200' replacement lock.
- Increased cost in the Preconstruction Engineering and Design (PED) phase led to a Post Authorization Change Report (PACR), which found the lock was no longer economically justified; project terminated in 2014.
- Preliminary data suggests the Lock Performance Monitoring System (LPMS) may not have accurately captured delay times and we believe there is merit in a restudy.
- Restudy expected to be a 3x3x3 SMART Planning study that could result in a General Reevaluation Report that may be submitted to Congress for additional authorization, contingent upon an economically justified plan.
- Restudy is a new start investment decision and we will express capability in future President's budgets and work plan opportunities.



THANK YOU

Sarah Bradley, 504-862-1723, sarah.c.bradley@usace.army.mil



* Drawing is not to scale