

STATUS OF INLAND WATERWAYS 2020 CAPITAL INVESTMENT STRATEGY UPDATE

Inland Waterways Users Board
Meeting No. 93
Ft. Smith, AR

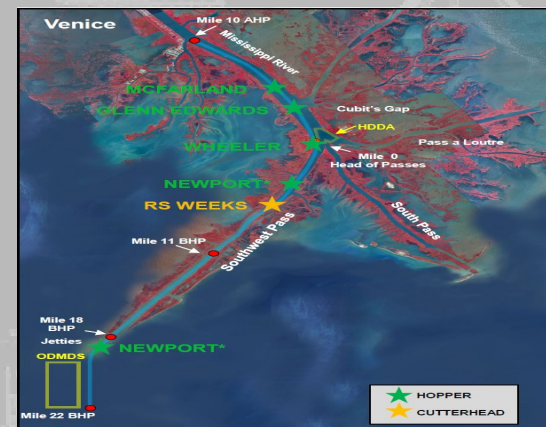
Michael E. Ott, PE, PMP
Chief, Navigation Branch
USACE Headquarters

19 February 2020

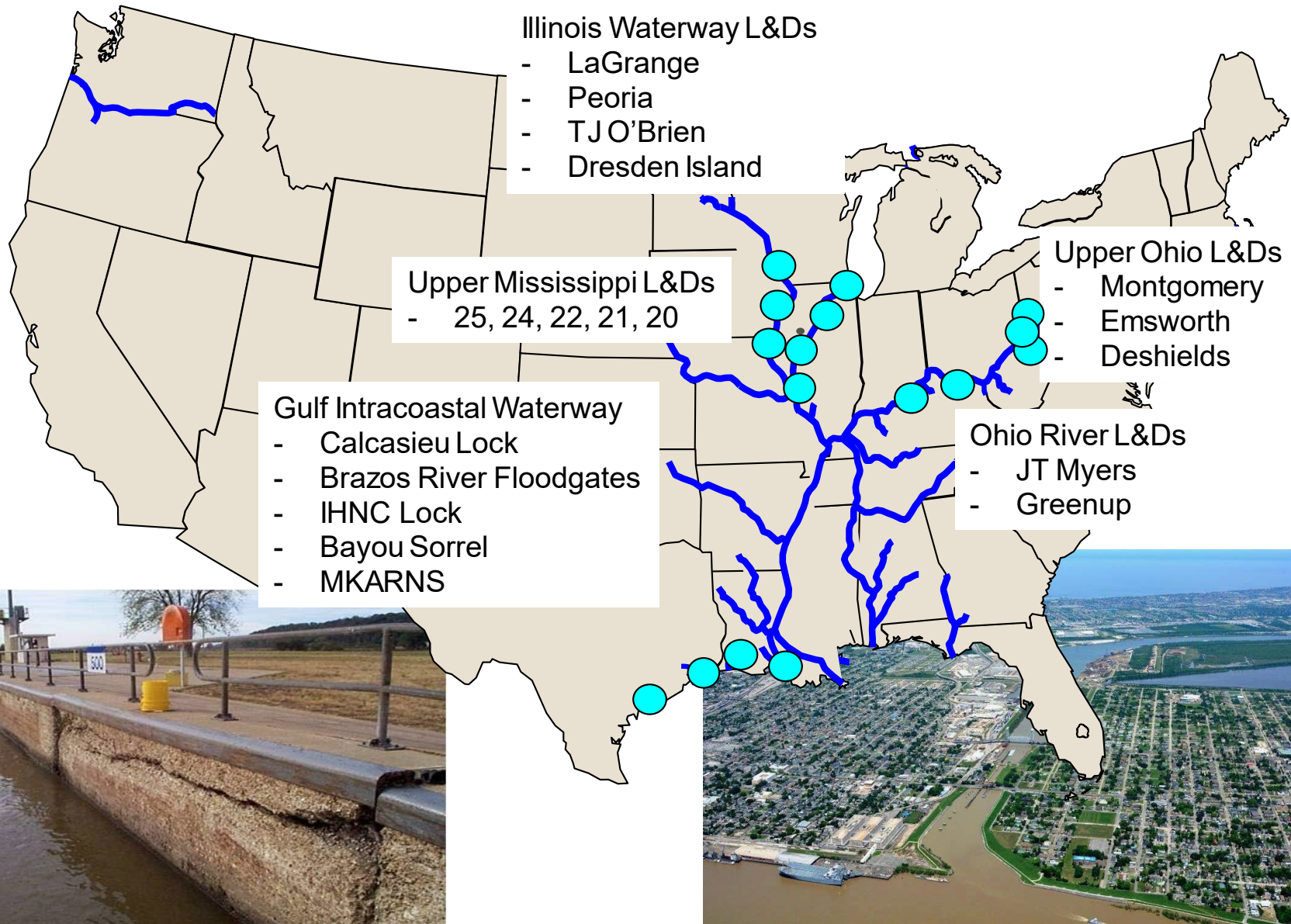
"The views, opinions, and findings contained in this report are those of the author(s) and should not be construed as an official Department of the Army position, policy or decision, unless so designated by other official documentation."



US Army Corps
of Engineers®



CAPITAL INVESTMENT OPPORTUNITIES





CAPITAL INVESTMENT STRATEGY – 2020 UPDATE

METHODOLOGY

3



Categorize



Attribute Definition



Attribute Weighting

Category	Description	Tool
1	Ongoing Construction	Weighted Analysis
2	New Construction Authorized	Weighted Analysis
3	Ongoing Study	Weighted Analysis
4	Future Potential Projects	Operational Risk Exposure

Attribute	Sub-Attribute
1 Economic	
	1.1 RBRCR (Remaining Benefit to Remaining Cost Ratio)
	1.2 BCR (Benefit Cost Ratio)
2 Reliability and Condition	
	2.1 Reliability
	2.2 Condition
3 Lock Utilization	
	3.1 Redundancy
	3.2 Delays
	3.3 Lockages
4 National Significance	

Attribute	Attribute Name	Weight
1	Economic	9%
2	Reliability and Condition	38%
3	Lock Utilization	17%
4	National Significance	36%



CAPITAL INVESTMENT STRATEGY – 2020 UPDATE

CATEGORY 1 AND 2 RESULTS



Category 1

<u>Priority</u>	<u>Project Title</u>	<u>Project Location</u>	<u>State</u>
1	Olmsted Locks and Dam	Ohio River	IL
2	Locks and Dams 2, 3, and 4, Monongahela River Navigation Project	Monongahela River	PA
3	Kentucky Lock Addition	Tennessee River	KY
4	Chickamauga Lock	Tennessee River	TN

Category 2

<u>Priority</u>	<u>Project Title</u>	<u>Project Location</u>	<u>State</u>
1	Upper Mississippi River - Illinois Waterway System Navigation and Ecosystem Sustainability Program (NESP)	Lock & Dam 25 (Mississippi River)	MO / IL
2	Three Rivers	MKARNS	
3	Upper Ohio Navigation Locks & Dams Improvements	Montgomery Locks and Dam	PA
4	Upper Mississippi River - Illinois Waterway System Navigation and Ecosystem Sustainability Program (NESP)	LaGrange Lock & Dam (Illinois Waterway)	IL
5	Calcasieu Lock	GMWW	
6	Upper Mississippi River - Illinois Waterway System Navigation and Ecosystem Sustainability Program (NESP)	Lock & Dam 24 (Mississippi River)	MO / IL
7	Inner Harbor Navigation Canal Locks		LA
8	MKARNS 12 ft channel		
9	Upper Mississippi River - Illinois Waterway System Navigation and Ecosystem Sustainability Program (NESP)	Lock & Dam 22 (Mississippi River)	MO / IL
10	Upper Ohio Navigation Locks & Dams Improvements	Emsworth Locks and Dam	PA
11	Upper Mississippi River - Illinois Waterway System Navigation and Ecosystem Sustainability Program (NESP)	Lock & Dam 21 (Mississippi River)	IL
12	Upper Mississippi River - Illinois Waterway System Navigation and Ecosystem Sustainability Program (NESP)	Peoria Lock & Dam (Illinois Waterway)	MO
13	Upper Ohio Navigation Locks & Dams Improvements	Dashields Locks and Dam	PA
14	Upper Mississippi River - Illinois Waterway System Navigation and Ecosystem Sustainability Program (NESP)	Lock & Dam 20 (Mississippi River)	MO
15	Thomas O'Brien Lock & Dam major rehabilitation	Illinois Waterway	IL
16	Bayou Sorrel Lock	GMWW	LA



CAPITAL INVESTMENT STRATEGY – 2020 UPDATE

CATEGORY 3 RESULTS



<u>Project Title</u>	<u>Project Location</u>	<u>Status</u>
The Dalles Major Rehabilitation Study		Ongoing MRR study
GIWW, High Island to Brazos River, TX	GIWW	Study ongoing, expected completion in 2020.
GIWW, Brazos River Floodgates	GIWW	Study completion. Awaiting WRDA construction authorization
GIWW, Port O'Connor to Corpus Christi Bay, TX	GIWW	Inactive study; awaiting funding to restart.
GIWW, Colorado River Locks	GIWW	Study completion; awaiting WRDA construction authorization



CAPITAL INVESTMENT STRATEGY – 2020 UPDATE

CATEGORY 4 RESULTS



Program Name	Project Name	CIS Site Name
OHIO RIVER LOCKS AND DAMS, WV, KY & OH	GREENUP LOCK - OHIO RIVER LOCKS AND DAMS HUNTINGTON	Greenup
ILLINOIS WATERWAY, IL & IN	ILLINOIS WATERWAY IL AND IN	Starved Rock
MCCLELLAN-KERR ARKANSAS RIVER NAVIGATION SYSTEM, AR	MCCLELLAN-KERR ARKANSAS RIVER NAVIGATION SYSTEM	David D. Terry
MCCLELLAN-KERR ARKANSAS RIVER NAVIGATION SYSTEM, AR	MCCLELLAN-KERR ARKANSAS RIVER NAVIGATION SYSTEM	Ozark-Jeta Taylor
MCCLELLAN-KERR ARKANSAS RIVER NAVIGATION SYSTEM, AR	MCCLELLAN-KERR ARKANSAS RIVER NAVIGATION SYSTEM	Webbers Falls
OHIO RIVER LOCKS AND DAMS, PA, OH & WV	OHIO RIVER LOCKS AND DAMS H4	Pike Island
MISSISSIPPI RIVER BETWEEN MISSOURI RIVER AND MINNEAPOLIS, IL	MISSISSIPPI RIVER BETWEEN MISSOURI RIVER AND MINNEAPOLIS	Melvin Price
MCCLELLAN-KERR ARKANSAS RIVER NAVIGATION SYSTEM, AR	MCCLELLAN-KERR ARKANSAS RIVER NAVIGATION SYSTEM	Lock Num. 2 & Mills Dam
MCCLELLAN-KERR ARKANSAS RIVER NAVIGATION SYSTEM, OK	MCCLELLAN-KERR ARKANSAS RIVER NAVIGATION SYSTEM	Robert S. Kerr
OHIO RIVER LOCKS AND DAMS, WV, KY & OH	OHIO RIVER LOCKS AND DAMS HUNTINGTON DISTRICT	Meldahl
ILLINOIS WATERWAY, IL & IN	DRESDEN ISLAND LOCK - ILLINOIS WATERWAY IL AND IN (NDC)	Dresden Island
MONONGAHELA RIVER, PA	MONONGAHELA RIVER, PA	Braddock
OHIO RIVER LOCKS AND DAMS, PA, OH & WV	OHIO RIVER LOCKS AND DAMS H4	New Cumberland
OHIO RIVER LOCKS AND DAMS, WV, KY & OH	RACINE LOCK - OHIO RIVER LOCKS AND DAMS HUNTINGTON	Racine
OHIO RIVER LOCKS AND DAMS, WV, KY & OH	BELLEVILLE LOCK - OHIO RIVER LOCKS AND DAMS HUNTINGTON	Belleville
OHIO RIVER LOCKS AND DAMS, WV, KY & OH	WILLOW ISLAND LOCK - OHIO RIVER LOCKS AND DAMS HUNTINGTON	Willow Island
KANAWHA RIVER LOCKS AND DAMS, WV	LONDON LOCK - KANAWHA RIVER LOCKS AND DAMS	London
KANAWHA RIVER LOCKS AND DAMS, WV	MARMET LOCK - KANAWHA RIVER LOCKS AND DAMS	Marmet
KANAWHA RIVER LOCKS AND DAMS, WV	WINFIELD LOCK - KANAWHA RIVER LOCKS AND DAMS	Winfield
OHIO RIVER LOCKS AND DAMS, PA, OH & WV	OHIO RIVER LOCKS AND DAMS H4	Hannibal
ILLINOIS WATERWAY, IL & IN	BRANDON ROAD LOCK - ILLINOIS WATERWAY IL AND IN (NDC)	Brandon Road
MISSISSIPPI RIVER (Add RIVER REACH)	MISSISSIPPI RIVER (Add RIVER REACH)	Lock No. 18



On line nstr tin ndin re resents e ient ndin r ile.
Ne r et ndin re resents a e iity estimate re ient desi nand nstr tin.
sts are is ed I T e e t r i ama in and Olmsted in all
years.
Pr ram ndin starts at M M ed M I T
I T re en e r sann ally y .
I T minim m alan eis M. Ne nstr tin ill n tstart i I T alan e ld
dr el M.

			Total Project Costs																														Total Construction Costs																																																																																																																																																																																																																																																																																																																																																																																																																																																																																																																																																																																																																																																																																																																																																																																																																																																																																																																																																																																																																																																																																																																																																																																																																																																																																																																	
			\$	\$	\$	\$	\$	\$	\$	\$	\$	\$	\$	\$	\$	\$	\$	\$	\$	\$	\$	\$	\$	\$	\$	\$	\$	\$	\$	\$	\$	\$	\$	\$	\$	\$	\$	\$	\$	\$	\$	\$	\$	\$	\$	\$	\$	\$	\$	\$	\$	\$	\$	\$	\$	\$	\$	\$	\$	\$	\$	\$	\$	\$	\$	\$	\$	\$	\$	\$	\$	\$	\$	\$	\$	\$	\$	\$	\$	\$	\$	\$	\$	\$	\$	\$	\$	\$	\$	\$	\$	\$	\$	\$	\$	\$	\$	\$	\$	\$	\$	\$	\$	\$	\$	\$	\$	\$	\$	\$	\$	\$	\$	\$	\$	\$	\$	\$	\$	\$	\$	\$	\$	\$	\$	\$	\$	\$	\$	\$	\$	\$	\$	\$	\$	\$	\$	\$	\$	\$	\$	\$	\$	\$	\$	\$	\$	\$	\$	\$	\$	\$	\$	\$	\$	\$	\$	\$	\$	\$	\$	\$	\$	\$	\$	\$	\$	\$	\$	\$	\$	\$	\$	\$	\$	\$	\$	\$	\$	\$	\$	\$	\$	\$	\$	\$	\$	\$	\$	\$	\$	\$	\$	\$	\$	\$	\$	\$	\$	\$	\$	\$	\$	\$	\$	\$	\$	\$	\$	\$	\$	\$	\$	\$	\$	\$	\$	\$	\$	\$	\$	\$	\$	\$	\$	\$	\$	\$	\$	\$	\$	\$	\$	\$	\$	\$	\$	\$	\$	\$	\$	\$	\$	\$	\$	\$	\$	\$	\$	\$	\$	\$	\$	\$	\$	\$	\$	\$	\$	\$	\$	\$	\$	\$	\$	\$	\$	\$	\$	\$	\$	\$	\$	\$	\$	\$	\$	\$	\$	\$	\$	\$	\$	\$	\$	\$	\$	\$	\$	\$	\$	\$	\$	\$	\$	\$	\$	\$	\$	\$	\$	\$	\$	\$	\$	\$	\$	\$	\$	\$	\$	\$	\$	\$	\$	\$	\$	\$	\$	\$	\$	\$	\$	\$	\$	\$	\$	\$	\$	\$	\$	\$	\$	\$	\$	\$	\$	\$	\$	\$	\$	\$	\$	\$	\$	\$	\$	\$	\$	\$	\$	\$	\$	\$	\$	\$	\$	\$	\$	\$	\$	\$	\$	\$	\$	\$	\$	\$	\$	\$	\$	\$	\$	\$	\$	\$	\$	\$	\$	\$	\$	\$	\$	\$	\$	\$	\$	\$	\$	\$	\$	\$	\$	\$	\$	\$	\$	\$	\$	\$	\$	\$	\$	\$	\$	\$	\$	\$	\$	\$	\$	\$	\$	\$	\$	\$	\$	\$	\$	\$	\$	\$	\$	\$	\$	\$	\$	\$	\$	\$	\$	\$	\$	\$	\$	\$	\$	\$	\$	\$	\$	\$	\$	\$	\$	\$	\$	\$	\$	\$	\$	\$	\$	\$	\$	\$	\$	\$	\$	\$	\$	\$	\$	\$	\$	\$	\$	\$	\$	\$	\$	\$	\$	\$	\$	\$	\$	\$	\$	\$	\$	\$	\$	\$	\$	\$	\$	\$	\$	\$	\$	\$	\$	\$	\$	\$	\$	\$	\$	\$	\$	\$	\$	\$	\$	\$	\$	\$	\$	\$	\$	\$	\$	\$	\$	\$	\$	\$	\$	\$	\$	\$	\$	\$	\$	\$	\$	\$	\$	\$	\$	\$	\$	\$	\$	\$	\$	\$	\$	\$	\$	\$	\$	\$	\$	\$	\$	\$	\$	\$	\$	\$	\$	\$	\$	\$	\$	\$	\$	\$	\$	\$	\$	\$	\$	\$	\$	\$	\$	\$	\$	\$	\$	\$	\$	\$	\$	\$	\$	\$	\$	\$	\$	\$	\$	\$	\$	\$	\$	\$	\$	\$	\$	\$	\$	\$	\$	\$	\$	\$	\$	\$	\$	\$	\$	\$	\$	\$	\$	\$	\$	\$	\$	\$	\$	\$	\$	\$	\$	\$	\$	\$	\$	\$	\$	\$	\$	\$	\$	\$	\$	\$	\$	\$	\$	\$	\$	\$	\$	\$	\$	\$	\$	\$	\$	\$	\$	\$	\$	\$	\$	\$	\$	\$	\$	\$	\$	\$	\$	\$	\$	\$	\$	\$	\$	\$	\$	\$	\$	\$	\$	\$	\$	\$	\$	\$	\$	\$	\$	\$	\$	\$	\$	\$	\$	\$	\$	\$	\$	\$	\$	\$	\$	\$	\$	\$	\$	\$	\$	\$	\$	\$	\$	\$	\$	\$	\$	\$	\$	\$	\$	\$	\$	\$	\$	\$	\$	\$	\$	\$	\$	\$	\$	\$	\$	\$	\$	\$	\$	\$	\$	\$	\$	\$	\$	\$	\$	\$	\$	\$	\$	\$	\$	\$	\$	\$	\$	\$	\$	\$	\$	\$	\$	\$	\$	\$	\$	\$	\$	\$	\$	\$	\$	\$	\$	\$	\$	\$	\$	\$	\$	\$	\$	\$	\$	\$	\$	\$	\$	\$	\$	\$	\$	\$	\$	\$	\$	\$	\$	\$	\$	\$	\$	\$	\$	\$	\$	\$	\$	\$	\$	\$	\$	\$	\$	\$	\$	\$	\$	\$	\$	\$	\$	\$	\$	\$	\$	\$	\$	\$	\$	\$	\$	\$	\$	\$	\$	\$	\$	\$	\$	\$	\$	\$	\$	\$	\$	\$	\$	\$	\$	\$	\$	\$	\$	\$	\$	\$	\$	\$	\$	\$	\$	\$	\$	\$	\$	\$	\$	\$	\$	\$	\$	\$	\$	\$	\$	\$	\$	\$	\$	\$	\$	\$	\$	\$	\$	\$	\$	\$	\$	\$	\$	\$	\$	\$	\$	\$	\$	\$	\$	\$	\$	\$	\$	\$	\$	\$	\$	\$	\$	\$	\$	\$	\$	\$	\$	\$	\$	\$	\$	\$	\$	\$	\$	\$	\$	\$	\$	\$	\$	\$	\$	\$	\$	\$	\$	\$	\$	\$	\$	\$	\$	\$	\$	\$	\$	\$	\$	\$	\$	\$	\$	\$	\$	\$	\$	\$	\$	\$	\$	\$	\$	\$	\$	\$	\$	\$	\$	\$	\$	\$	\$	\$	\$	\$	\$	\$	\$	\$	\$	\$	\$	\$	\$	\$	\$	\$	\$	\$	\$	\$	\$	\$	\$	\$	\$	\$	\$	\$	\$	\$	\$	\$	\$	\$	\$	\$	\$	\$	\$	\$	\$	\$	\$	\$	\$	\$	\$	\$	\$	\$	\$	\$	\$	\$	\$	\$	\$	\$	\$	\$	\$	\$	\$	\$	\$	\$	\$	\$	\$	\$	\$	\$	\$	\$	\$	\$	\$	\$	\$	\$	\$	\$	\$	\$	\$	\$	\$	\$	\$	\$	\$	\$	\$	\$	\$	\$	\$	\$	\$	\$	\$	\$	\$	\$	\$	\$	\$	\$	\$	\$	\$	\$	\$	\$	\$	\$	\$	\$	\$	\$	\$	\$	\$	\$	\$	\$	\$	\$	\$	\$	\$	\$	\$	\$	\$	\$	\$	\$	\$	\$	\$	\$	\$	\$	\$	\$	\$	\$	\$	\$	\$	\$	\$	\$	\$	\$	\$	\$	\$	\$	\$	\$	\$	\$	\$	\$	\$	\$	\$	\$	\$	\$	\$	\$	\$	\$	\$	\$	\$	\$	\$	\$	\$	\$	\$	\$	\$	\$	\$	\$	\$	\$	\$	\$	\$	\$	\$	\$	\$	\$	\$	\$	\$	\$	\$	\$	\$	\$	\$	\$	\$	\$	\$	\$	\$	\$	\$	\$	\$	\$	\$	\$	\$	\$	\$	\$	\$	\$	\$	\$	\$	\$	\$	\$	\$	\$	\$	\$	\$	\$	\$	\$	\$	\$	\$	\$	\$	\$	\$	\$	\$	\$	\$	\$	\$	\$	\$	\$	\$	\$	\$	\$	\$	\$	\$	\$	\$	\$	\$	\$	\$	\$	\$	\$	\$	\$	\$	\$	\$	\$	\$	\$	\$	\$	\$	\$	\$	\$	\$	\$	\$	\$	\$	\$	\$	\$	\$	\$	\$	\$	\$	\$	\$	\$	\$	\$	\$	\$	\$	\$	\$	\$	\$	\$	\$	\$	\$	\$	\$	\$	\$	\$	\$	\$	\$	\$	\$	\$	\$	\$	\$	\$	\$	\$	\$	\$

NOTES:

* Total to construct projects shown is\$14.4B from 2020 to 2065.

Date: 2/4/2020

THIS SCENARIO IS A PLANNING FRAMEWORK AND DOES NOT REPLACE THE NORMAL BUDGET PROCESS OR COMMIT THE GOVERNMENT TO FUTURE ACTIONS.

DRAFT // PRE-DECISIONAL



DRAFT SEQUENCING – LIMITED TO \$400 MILLION BALANCE



ASSUMPTIONS:

On in nstr t'n ndin re resents e ient ndin r ile.
Ne r et ndin re resents a a ility estimate re ient desi n
and nstr t'n.
Pr ram ndin starts at M and r sann ally y .

DRAFT \$400M SCENARIO

NOTES:

*Total to construct projects shown is \$10.6B from 2020 to 2044.

	Total Design Cost:	\$ -	\$ 38.5	\$ 49.9	\$ 38.2	\$ -	\$ -	\$ 9.0	\$ 17.2	\$ 12.7	\$ 24.7	\$ 17.3	\$ 29.6	\$ 28.5	\$ 55.4	\$ 38.1	\$ 33.0	\$ 42.5	\$ 50.3	\$ 23.8	\$ -	\$ -	\$ -	\$ -	\$ -	\$ -	\$ -
	Total Construction Cost:	\$ 309.6	\$ 273.5	\$ 248.5	\$ 281.7	\$ 555.5	\$ 484.1	\$ 557.2	\$ 527.2	\$ 658.1	\$ 517.0	\$ 395.2	\$ 407.1	\$ 460.4	\$ 455.7	\$ 584.6	\$ 526.2	\$ 457.3	\$ 472.7	\$ 708.5	\$ 523.2	\$ 346.6	\$ 376.5	\$ 254.1	\$ 121.3	\$ 69.2	

Project	Project Description	Waterway	FY2020	FY2021	FY2022	FY2023	FY2024	FY2025	FY2026	FY2027	FY2028	FY2029	FY2030	FY2031	FY2032	FY2033	FY2034	FY2035	FY2036	FY2037	FY2038	FY2039	FY2040	FY2041	FY2042	FY2043	FY2044
Olmsted	New locks and dam.	Ohio	38.0	25.8																							
Lower Mon	New Lock	Monongahela	111.0																								
Kentucky	New Lock	Tennessee	66.1	169.4	169.1	186.3	74.7																				
Chickamauga	New Lock	Tennessee	94.5	78.3	79.4	95.4	39.1																				
NESP Upper Miss. River L&D 25	New Lock / 1200ft / NESP	Mississippi		6.7	10.6	6.6	107.0	110.2	113.5	116.9	120.4	23.9															
Three Rivers	channel protection	MKARNS			5.3	5.5	68.4	82.1	84.5	10.8																	
Upper Ohio - Montgomery L&D	New Lock / 600 ft / UO #1	Ohio		16.4	7.4	1.1	58.5	96.7	138.1	192.8	136.8	24.9															
NESP IWW LaGrange L&D	New Lock / 1200ft / NESP	Illinois		7.7	13.3	10.9	85.7	88.2	90.9	93.6	96.4	31.9															
Calcasieu Lock	lock bypass	GIWW				0.5	19.1	0.9	0.9	0.5																	
NESP Upper Miss. River L&D 24	New Lock / 1200ft / NESP	Mississippi		7.7	13.3	13.7	103.0	106.1	109.3	112.6	115.9	34.6															
Inner Harbor Navigation Canal (IHNC) Lock	New Lock	GIWW									129.2	340.5	243.2	250.5	216.7	171.8	104.4	74.8	41.7	34.7							
MKARNS 12' Channel	channel deepening	MKARNS							9.0	9.2	59.4	61.2	63.0	64.9	45.3	18.2											
NESP Upper Miss. River L&D 22	New Lock / 1200ft / NESP	Mississippi								8.0	12.7	7.8	89.6	91.7	94.4	97.3	100.2	28.5									
Upper Ohio - Emsworth L&D	New Lock / 600 ft / UO #2	Ohio									16.8	17.3	19.2	103.9	168.4	236.7	178.7	53.4									
NESP Upper Miss. River L&D 21	New Lock / 1200ft / NESP	Mississippi											10.4	17.8	18.4	143.3	147.6	152.0	156.6	161.3	46.6						
NESP IWW Peoria L&D	New Lock / 1200ft / NESP	Illinois												10.7	18.4	18.9	96.7	99.6	102.5	105.6	108.8	48.0					
Upper Ohio - Dashields L&D	New Lock / 600 ft / UO #3	Ohio													18.7	19.2	21.3	110.6	178.8	251.3	189.9	59.2					
NESP Upper Miss. River L&D 20	New Lock / 1200ft / NESP	Mississippi															11.7	20.1	20.7	106.9	110.1	113.4	116.8	120.3	52.4		
TJ O'Brien	Major Rehabilitation	Illinois																	6.6	83.4	6.6						
Bayou Sorrel Lock	new lock	GIWW																	22.4	23.1	23.8	61.2	126.1	259.7	133.7	68.9	69.2

Date: 2/4/2020

THIS SCENARIO IS A PLANNING FRAMEWORK AND DOES NOT REPLACE THE NORMAL BUDGET PROCESS OR COMMIT THE GOVERNMENT TO FUTURE ACTIONS.

DRAFT // PRE-DECISIONAL



DRAFT SEQUENCING – ACCELERATED CONSTRUCTION TIMELINE



ASSUMPTIONS:

On in nstr tin ndin re resents e ient ndin r ile.
Ne r et ndin re resents a aility estimate re ient
desi nand nstr tin.
Pr ram ndin ass mess ient ndin t m lete ne
r ets in years r m t .

DRAFT

ONST U TION SCENARIO

Total Design Cost:	\$ -	\$ 30.8	\$ 44.6	\$ 67.1	\$ 65.7	\$ 75.5	\$ 76.6	\$ 49.4	\$ 22.8	\$ -	\$ -	\$ -	\$ -	\$ -	\$ -	\$ -
Total Construction Cost:	\$ 309.6	\$ 273.5	\$ 248.5	\$ 281.7	\$ 433.4	\$ 675.6	\$ 1,090.9	\$ 1,233.2	\$ 1,406.4	\$ 1,213.1	\$ 935.6	\$ 767.9	\$ 379.9	\$ 128.4	\$ 83.3	\$ -

Project	Project Description	Waterway	FY2020	FY2021	FY2022	FY2023	FY2024	FY2025	FY2026	FY2027	FY2028	FY2029	FY2030	FY2031	FY2032	FY2033	FY2034
Olmsted	New locks and dam.	Ohio	38.0	25.8													
Lower Mon	New Lock	Monongahela	111.0														
Kentucky	New Lock	Tennessee	66.1	169.4	169.1	186.3	14.7										
Chickamauga	New Lock	Tennessee	94.5	78.3	79.4	95.4	39.1										
NESP Upper Miss. River L&D 25	New Lock / 1200ft / NESP	Mississippi		6.7	10.6	6.6	107.0	110.2	113.5	116.9	120.4	23.9					
Three Rivers	channel protection	MKARNS			5.3	5.5	68.4	82.1	84.5	10.8							
Upper Ohio Montgomery L&D	New Lock / 600 ft / UO #1	Ohio		16.4	7.4	1.1	58.5	96.7	158.1	192.8	136.8	24.9					
NESP IWW LaGrange L&D	New Lock / 1200ft / NESP	Illinois		7.7	13.3	10.9	85.7	88.2	90.9	93.6	96.4	31.9					
Calcasieu Lock	lock bypass	GIWW					0.6	19.7	0.9	0.9	0.6						
NESP Upper Miss. River L&D 24	New Lock / 1200ft / NESP	Mississippi			8.0	13.7	14.1	106.1	109.3	112.6	115.8	119.4	35.7				
Inner Harbor Navigation Canal (IHNC) Lock	New Lock	GIWW						118.2	311.6	222.6	229.3	198.3	157.2	95.5	68.4	38.2	31.8
MKARNS 12' Channel	channel deepening	MKARNS				8.2	8.4	54.3	56.0	57.7	59.4	41.5	16.6				
NESP Upper Miss. River L&D 22	New Lock / 1200ft / NESP	Mississippi				7.1	11.3	7.0	79.1	81.4	83.9	86.4	89.0	25.3			
Upper Ohio Emsworth L&D	New Lock / 600 ft / UO #2	Ohio				14.1	14.5	16.1	87.0	141.1	198.2	149.7	44.7				
NESP Upper Miss. River L&D 21	New Lock / 1200ft / NESP	Mississippi					8.4	14.5	14.9	116.5	120.0	123.6	127.3	131.2	37.9		
NESP IWW Peoria L&D	New Lock / 1200ft / NESP	Illinois					8.4	14.5	14.9	76.3	78.6	81.0	83.4	85.9	37.9		
Upper Ohio Dashields L&D	New Lock / 600 ft / UO #3	Ohio						14.7	15.2	16.8	87.3	141.2	198.4	149.9	46.7		
NESP Upper Miss. River L&D 20	New Lock / 1200ft / NESP	Mississippi						8.7	14.9	15.4	79.5	81.9	84.4	86.9	89.5	39.0	
TJ O'Brien	Major Rehabilitation	Illinois									5.1	63.9	5.1				
Bayou Sorrel Lock	new lock	GIWW							16.7	17.2	17.7	45.5	93.8	193.2	99.5	51.3	51.5

NOTES:

* Total to construct projects shown is \$.45B from 2020 to 20 4.

Date: 2/4/2020

THIS SCENARIO IS A PLANNING FRAMEWORK AND DOES NOT REPLACE THE NORMAL BUDGET PROCESS OR COMMIT THE GOVERNMENT TO FUTURE ACTIONS.

DRAFT // PRE-DECISIONAL



NEXT STEPS



Action

Public Comment

Review/Update

Submit to ASA CW

Timeframe

2/4/2020 – 2/28/2020

2/29/2020 – 3/13/2020

3/16/2020

Comments submitted to: NavigationCIS@usace.army.mil