



# Chickamauga Lock

Chattanooga, TN

**Wayne Huddleston**  
**Project Manager**



**US Army Corps  
Of Engineers®**  
Nashville District





US Army Corps  
Of Engineers®  
Nashville District

TVA

# Tennessee River Navigation System







US Army Corps  
Of Engineers®  
Nashville District

TVA

# Chickamauga Lock

## Generators – Watts Bar Nuclear Plant







US Army Corps  
Of Engineers®  
Nashville District

TVA

# Chickamauga Lock Concrete Growth







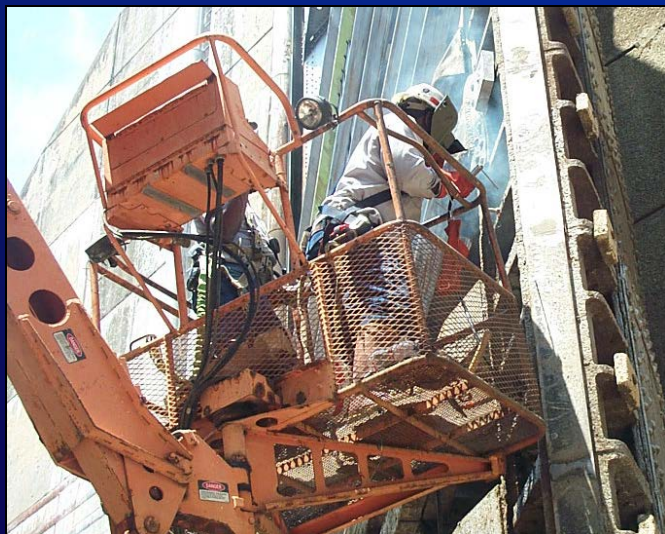
US Army Corps  
Of Engineers®  
Nashville District

TVA

# Chickamauga Lock

## Aggressive Maintenance

FY05 - \$1.1M  
FY06 - \$2.4M  
FY07 - \$1.3M



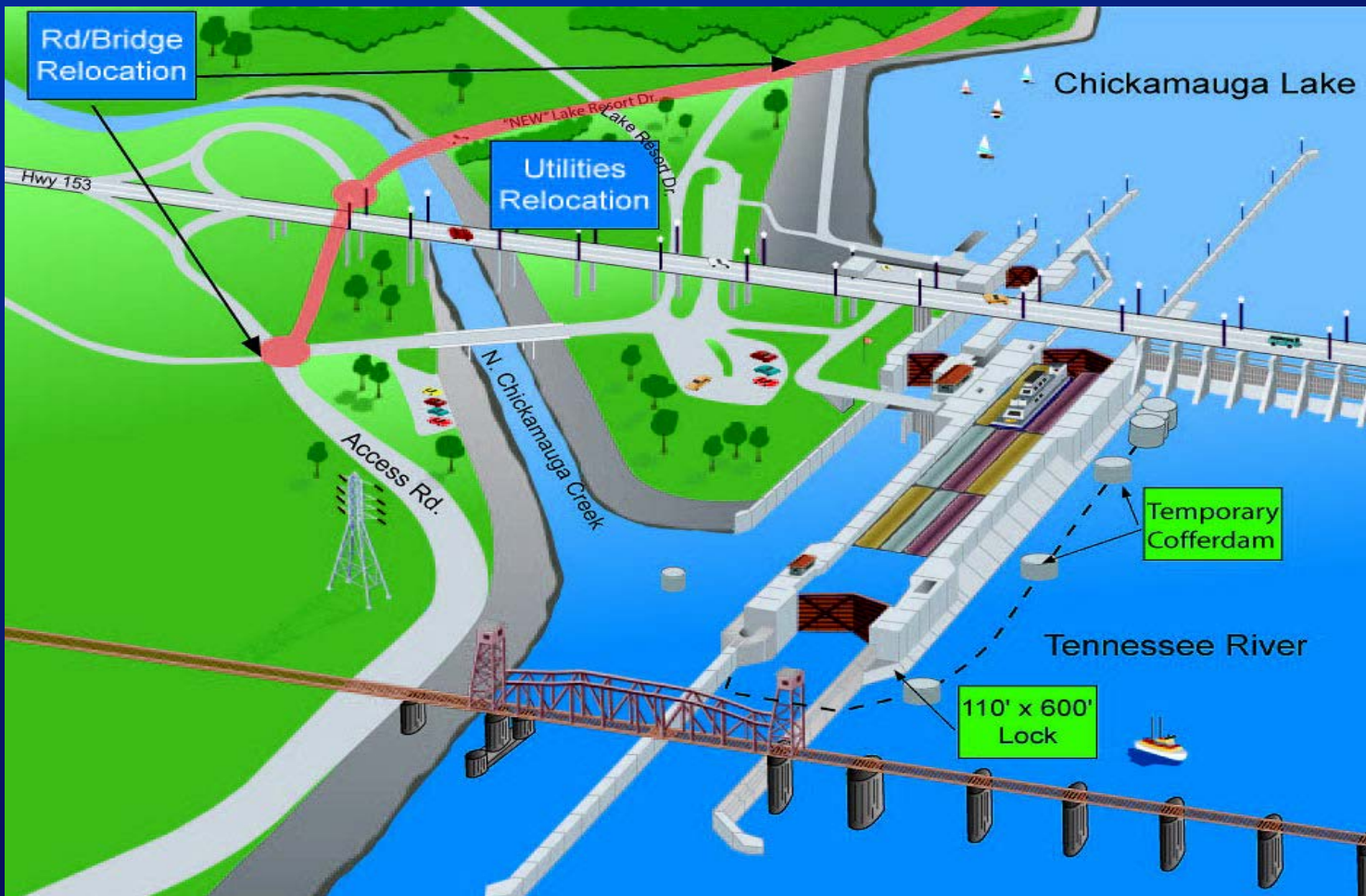




US Army Corps  
Of Engineers ®  
Nashville District

TVA

# Chickamauga Lock Construction Contracts







US Army Corps  
Of Engineers ®  
Nashville District

# Chickamauga Lock

## Construction Schedule



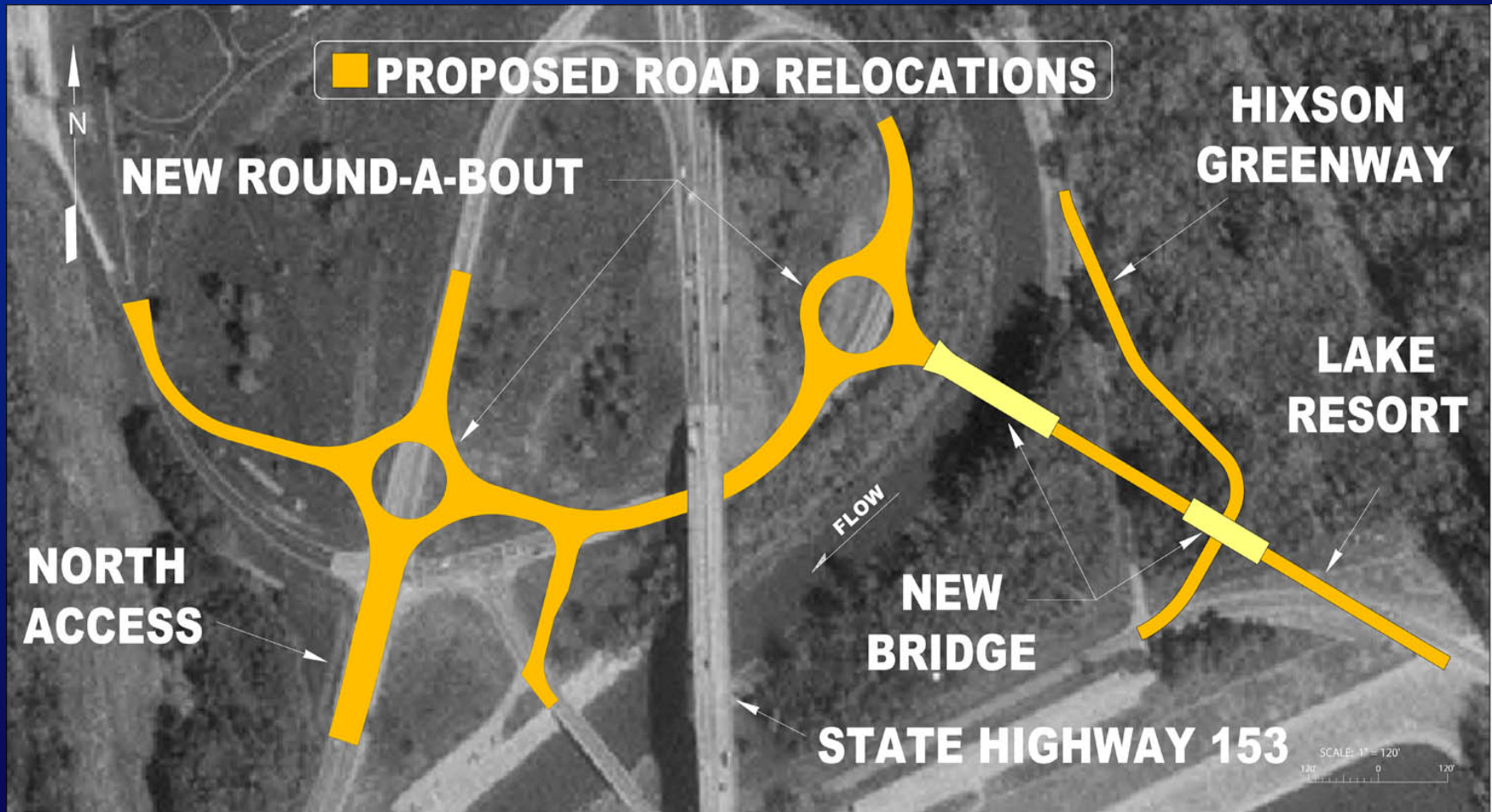




US Army Corps  
Of Engineers®  
Nashville District



# Chickamauga Lock Road/Bridge Relocation







US Army Corps  
Of Engineers®  
Nashville District

TVA

# Chickamauga Lock

## Road & Bridge Relocation Contract







US Army Corps  
Of Engineers®  
Nashville District



# Chickamauga Lock Design/Construction

## FY06

- Complete Cofferdam P&S
- Award Cofferdam Contract
- Continue Road/Bridge Relocation

## FY07

- Complete Road/Bridge Relocation
- Continue Cofferdam Construction
- Continue Lock Design & Modeling

## FY08

- Continue Cofferdam Construction
- Continue Lock Design and Analysis



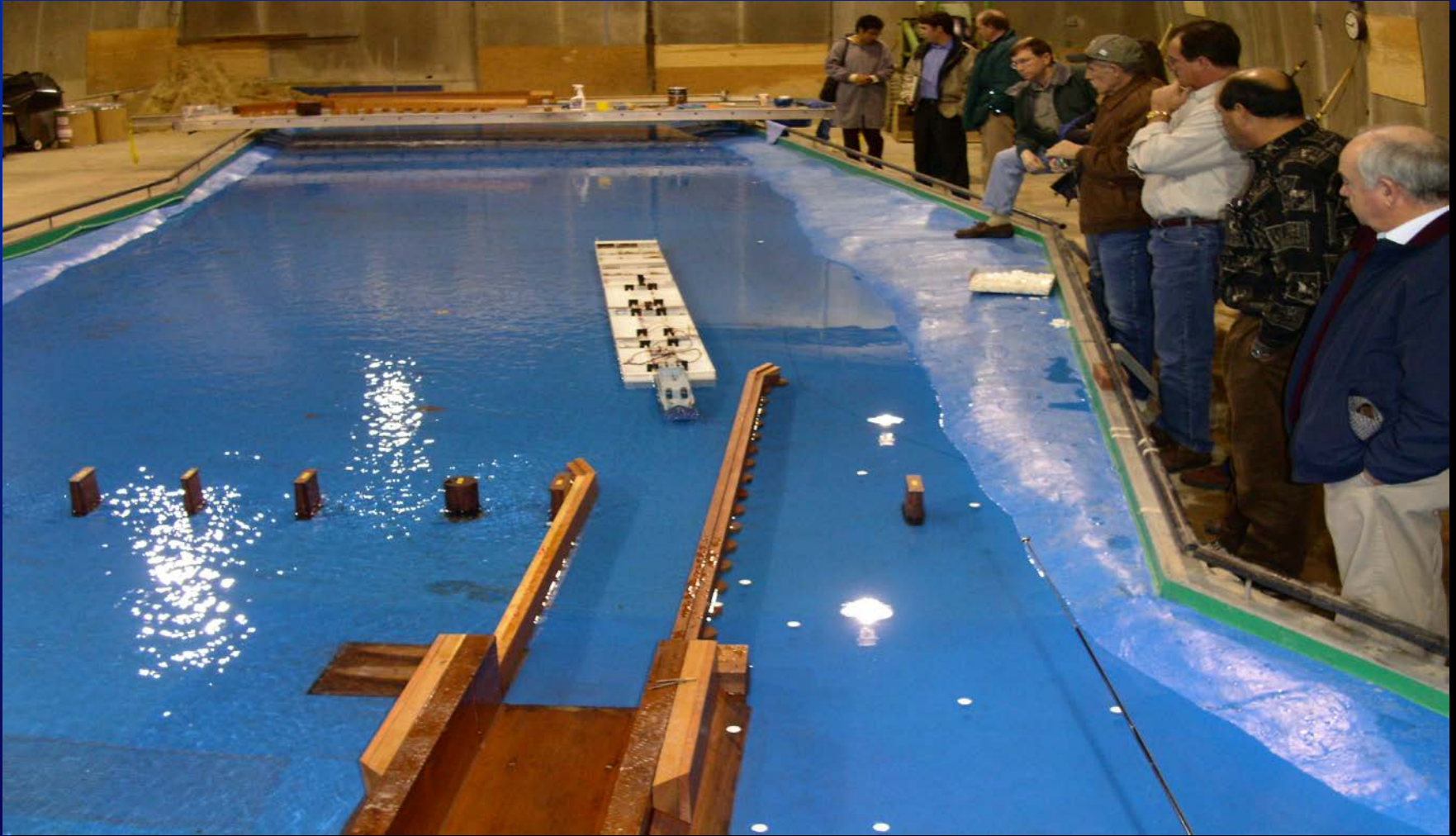


US Army Corps  
Of Engineers®  
Nashville District

# Chickamauga Lock

## Navigation & Lock Models

TVA



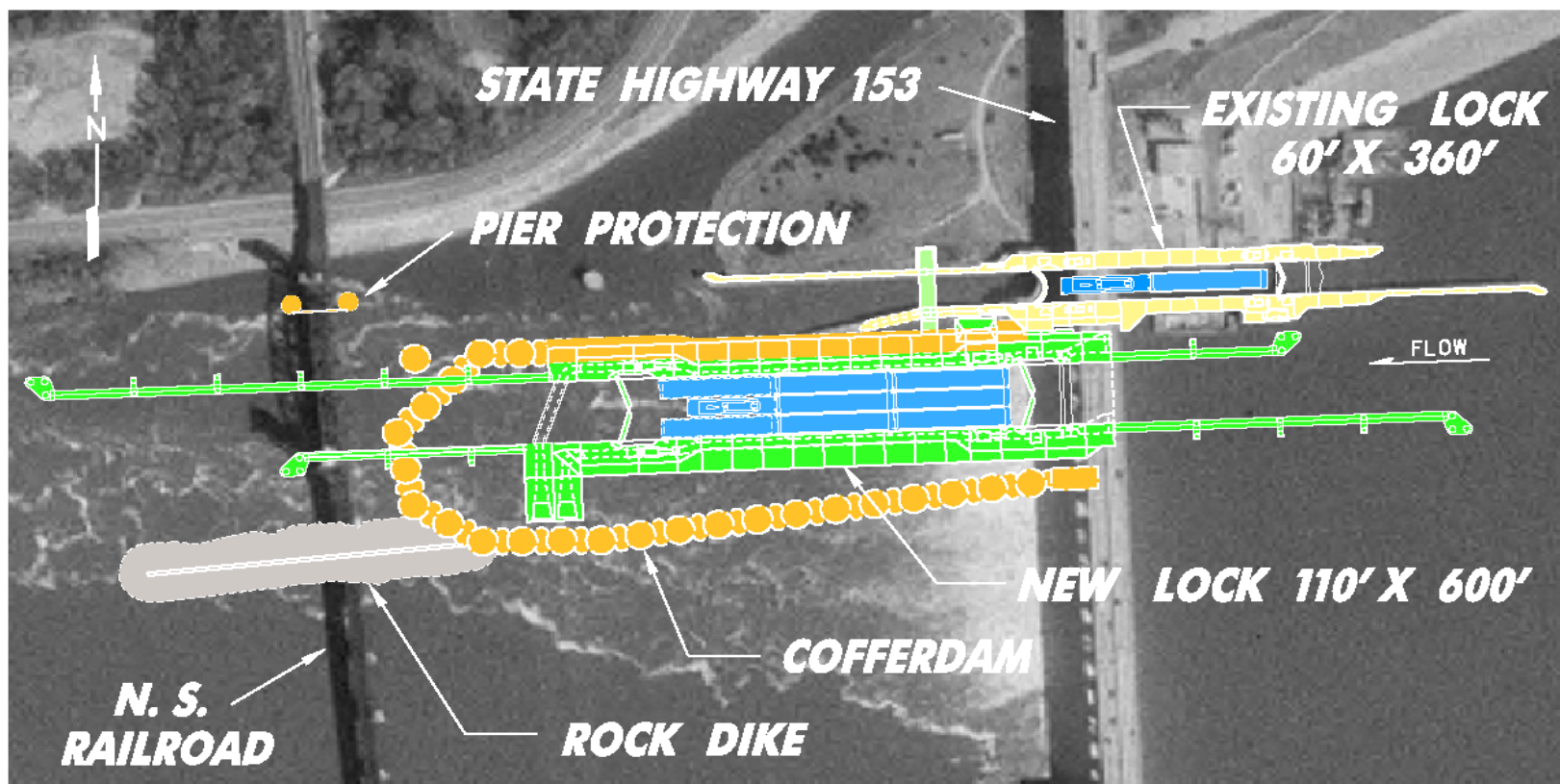




US Army Corps  
Of Engineers®  
Nashville District

# Chickamauga Lock Cofferdam Design

TVA



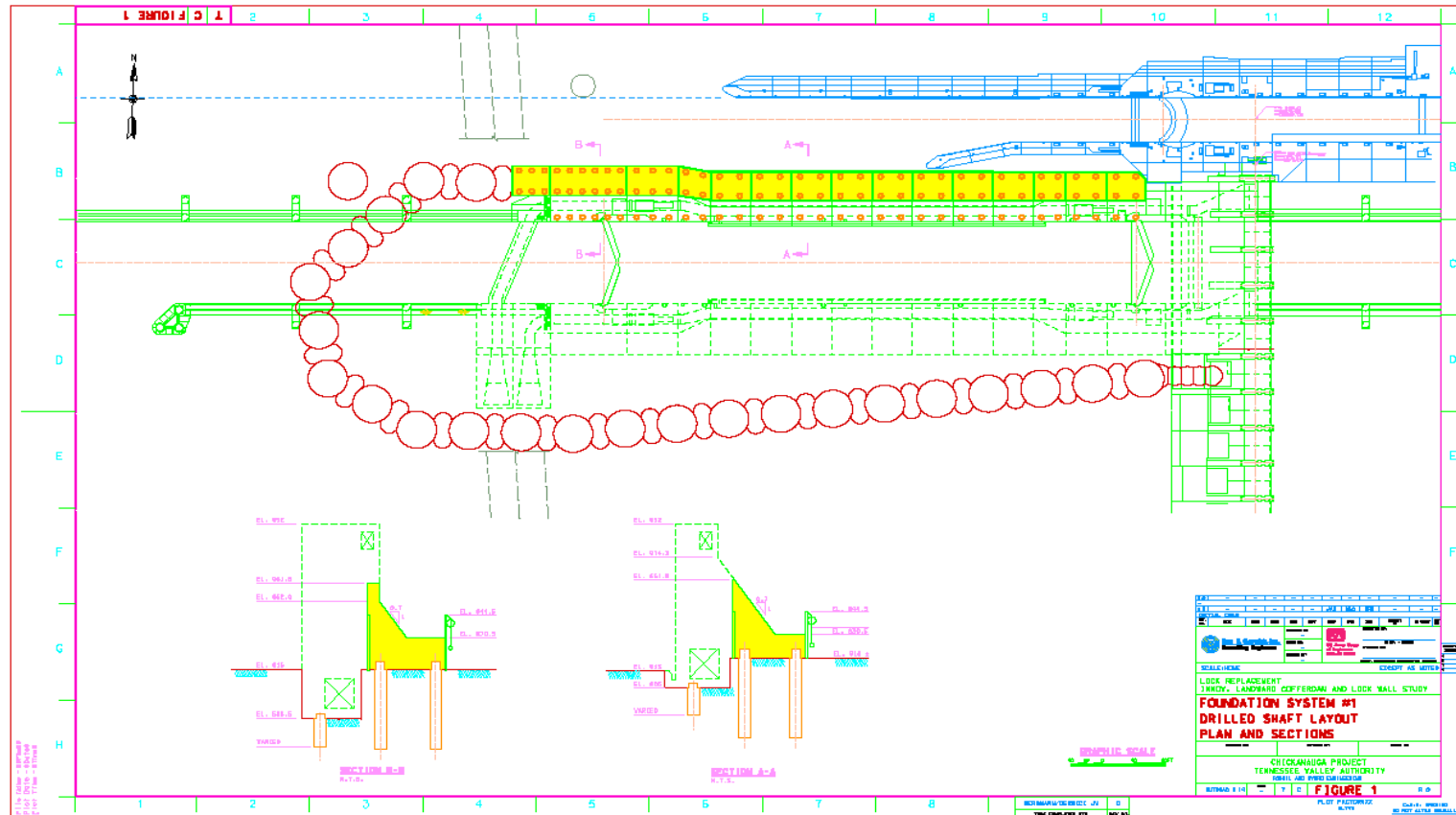




US Army Corps  
Of Engineers®  
Nashville District



# Chickamauga Lock Combined Cofferdam - Lock Wall







US Army Corps  
Of Engineers®  
Nashville District

TVA

# Chickamauga Lock

110 ft x 600 ft

