

*Presentation at the*

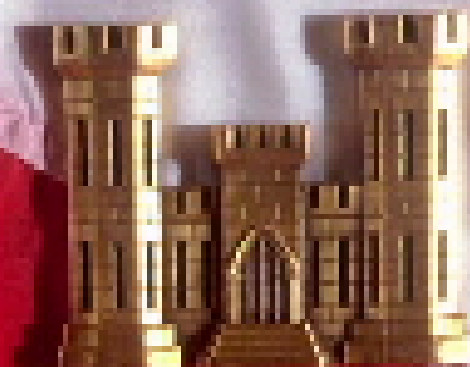
# ***Inland Waterway User Board Meeting***

*by*

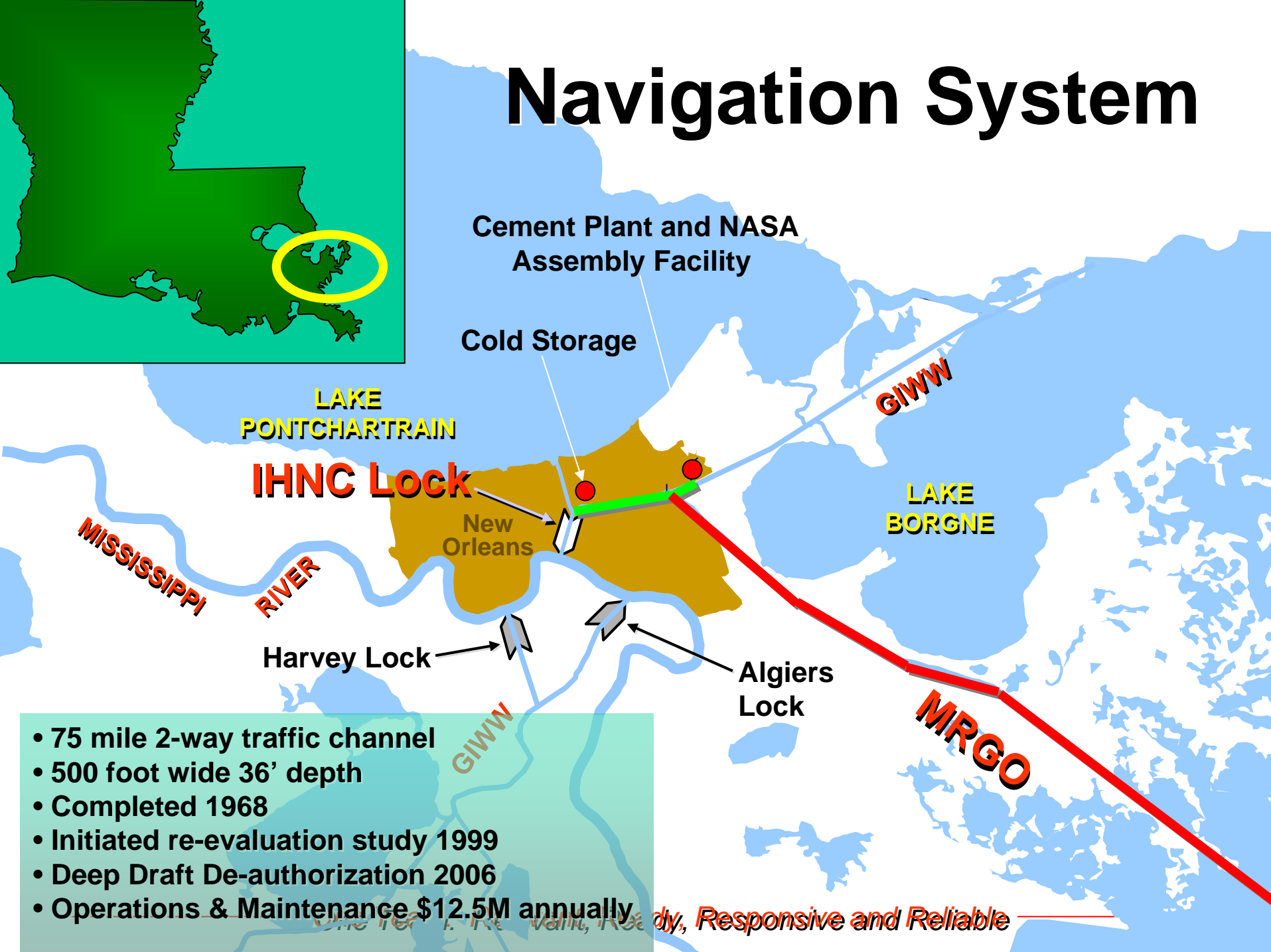
***Mr. Michael Rogers***

***Programs Director, Mississippi Valley Division***

***November 2, 2007***



# Navigation System



Cement Plant and NASA  
Assembly Facility

Cold Storage

LAKE  
PONTCHARTRAIN

**IHNC Lock**

New  
Orleans

**GIWW**

LAKE  
BORGNE

MISSISSIPPI  
RIVER

Harvey Lock

Algiers  
Lock

**MRGO**

- 75 mile 2-way traffic channel
- 500 foot wide 36' depth
- Completed 1968
- Initiated re-evaluation study 1999
- Deep Draft De-authorization 2006
- Operations & Maintenance \$12.5M annually

dy, Responsive and Reliable



US Army Corps  
of Engineers®

# MRGO Deep

## Draft De-authorization Study



- **Congressional mandate - Comprehensive plan by December 2007**
- **Interim report submitted December 2006**
- **Draft report/Legislative EIS released July 2007 for public comment**
- **Tentative recommendation**
  - **Deauthorization of all navigation from Mile 60 to the Gulf of Mexico**
  - **Total closure with rock structure across MRGO near Hopedale, LA**



US Army Corps  
of Engineers®

# MRGO Activities



- Civil Works Review Board 19 Oct 07
- State and Agency Review (30 Days) Nov 07
- Chief's Report Dec 07



US Army Corps  
of Engineers®



# Inner Harbor Lock

## Replacement

- Total Cost \$804M
- Presidents Budget \$0
- Capability \$6M
- Enjoined by Court
  - Supplemental EIS – Complete- FY09



## Reliability

- \$34M O&M – 3 years
  - Dewater
  - Replace Gates & Operating Machinery
  - Replace Guidewall
  - Repair Concrete



- **Channel Closed 29 Oct 2007**
- **Salvage Operation underway**





US Army Corps  
of Engineers®



# Questions??

---

*One Team: Relevant, Ready, Responsive and Reliable*