

Inland Waterways

Users Board

Upper Mississippi and Illinois Waterway System

Mr. Eddie Belk PE SES

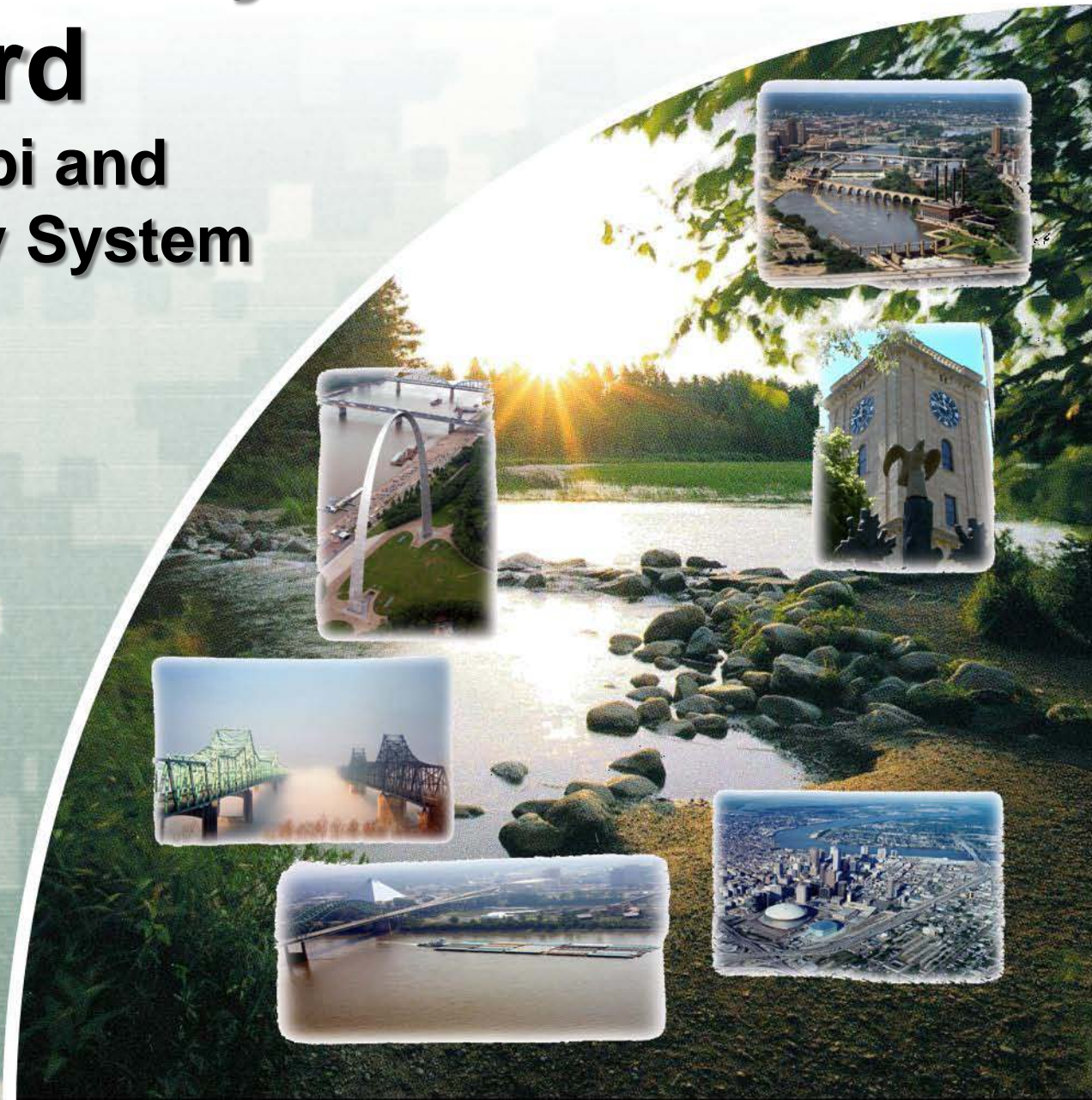
Programs Director

Mississippi Valley Division

August 29, 2012



US Army Corps of Engineers
BUILDING STRONG®




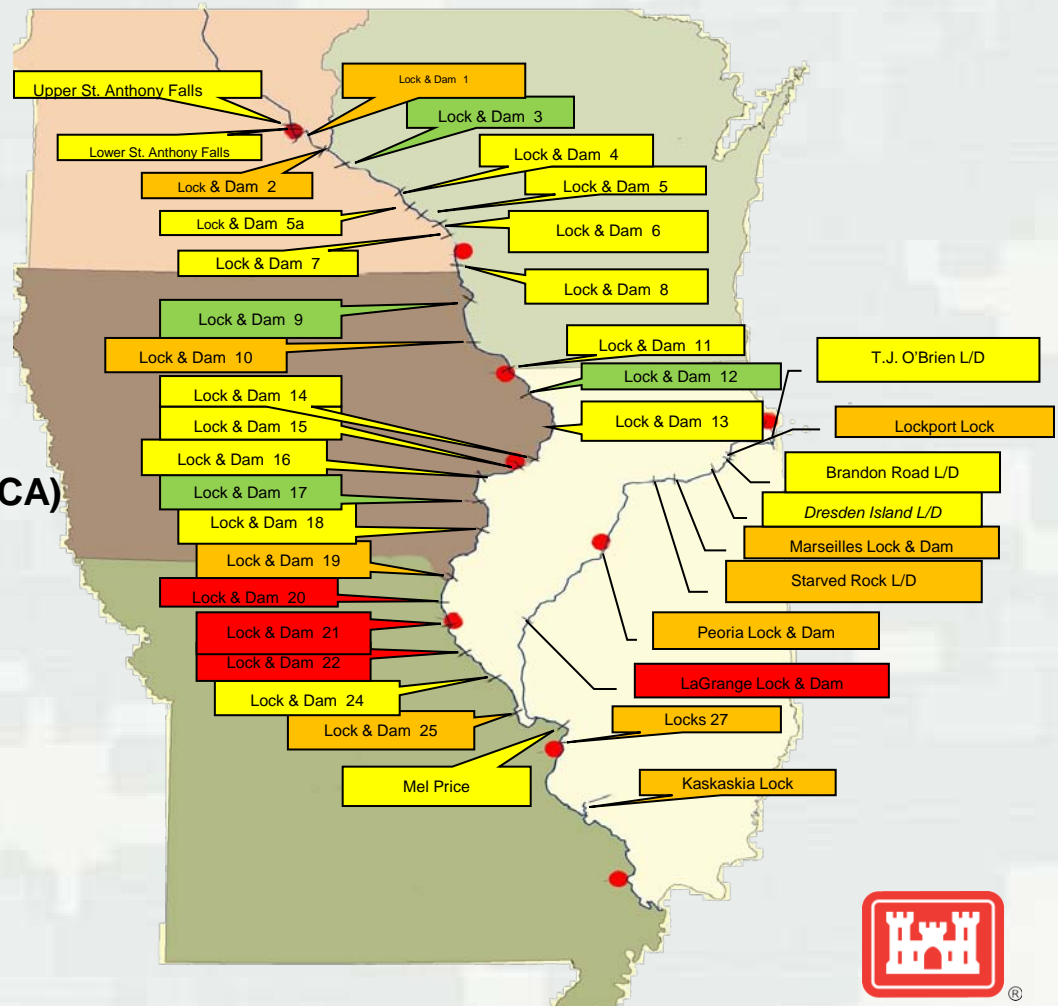
Upper Miss River and Illinois Waterway System

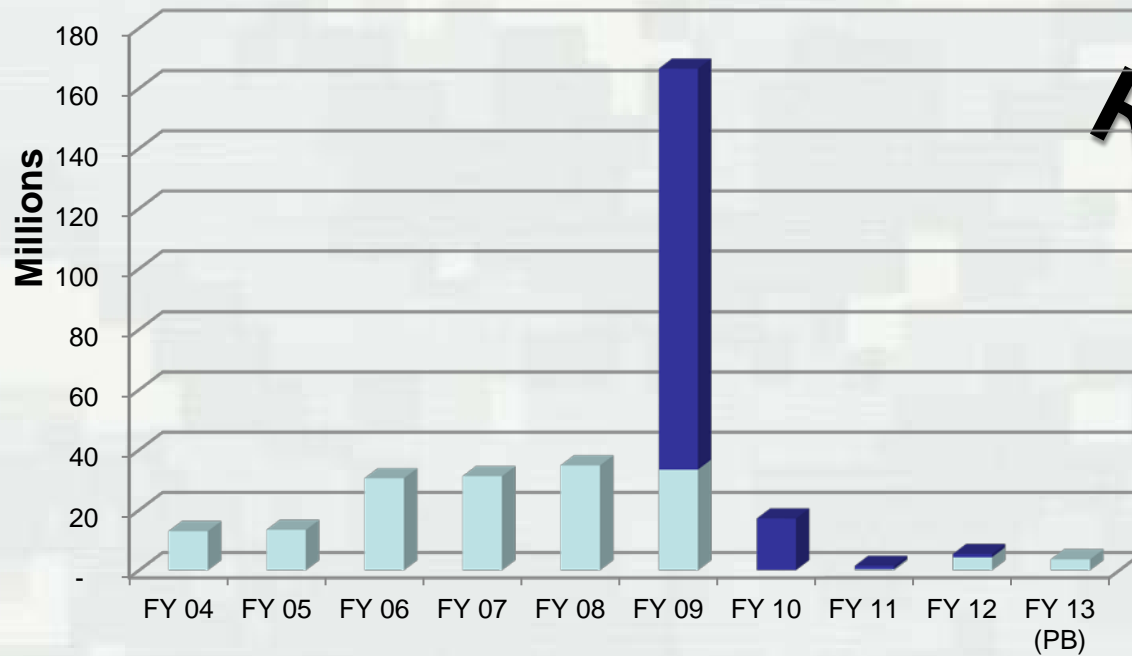
- UMR - 29 L&D
- IWW - 8 L&D
- 34/37 are Single Chamber

2010 Operational Condition Assessment (OCA)

Assessment of Component Conditions
(Does not indicate likelihood of failure)

	Failed/Failing
	Inadequate
	Poor
	Good





Project	FY 04	FY 05	FY 06	FY 07	FY 08	FY 09	FY 10	FY 11	FY 12	FY 13 (PB)
L&D 3 (Major Rehab)	\$440		\$1,486	\$500	\$986	\$957				
L&D 3 (Major Rehab) ARRA						\$60,682				
L&D 11 (Major Rehab)	\$965	\$1,332	\$7,504	\$23,020	\$5,141	\$2,632				
L&D 11 (Major Rehab) ARRA						\$3,465	\$100			
L&D 19 (Major Rehab)	\$551	\$4,264	\$17,327	\$6,271	\$1,447					
Lockport (Major Rehab)					\$20,118	\$27,369			\$4,200	\$3,600
Lockport (Major Rehab) ARRA						\$57,956			\$1,092	
L&D 24 (Major Rehab)	\$11,014	\$7,818	\$4,257	\$1,454	\$308					
Lock 27 (Major Rehab)					\$6,837	\$2,486		\$350	\$98	
Lock 27 (Major Rehab) ARRA						\$10,985	\$17,083	\$1,088		
Total	\$12,970	\$13,414	\$30,574	\$31,245	\$34,837	\$166,532	\$17,183	\$1,438	\$5,390	\$3,600

Future Program with Current Revenues

Current Program \$170M/YR - Projects completed with efficient schedule

Project	2010	2011	2012	2013	2014	2015	2016	2017	2018	2019	2020	2021	2022	2023	2024	2025	2026	2027	2028	2029	2030	2031	2032	2033	2034	2035	2036	2037	2038
OLMSTED LOCKS AND DAM, OHIO RIVER, IL & KY																													
EMSWORTH LOCKS AND DAM, OHIO RIVER, PA (Dam Safety)																													
MARKLAND LOCKS AND DAM, KY & IN (MAJOR REHAB)																													
TOTAL Efficient Funding	136	145	136	148	145	134	67	50	28	0.0	0	0	0	0	0	0	0	0	0	0									

Current Program \$170M/YR - Projects completed with constrained schedule

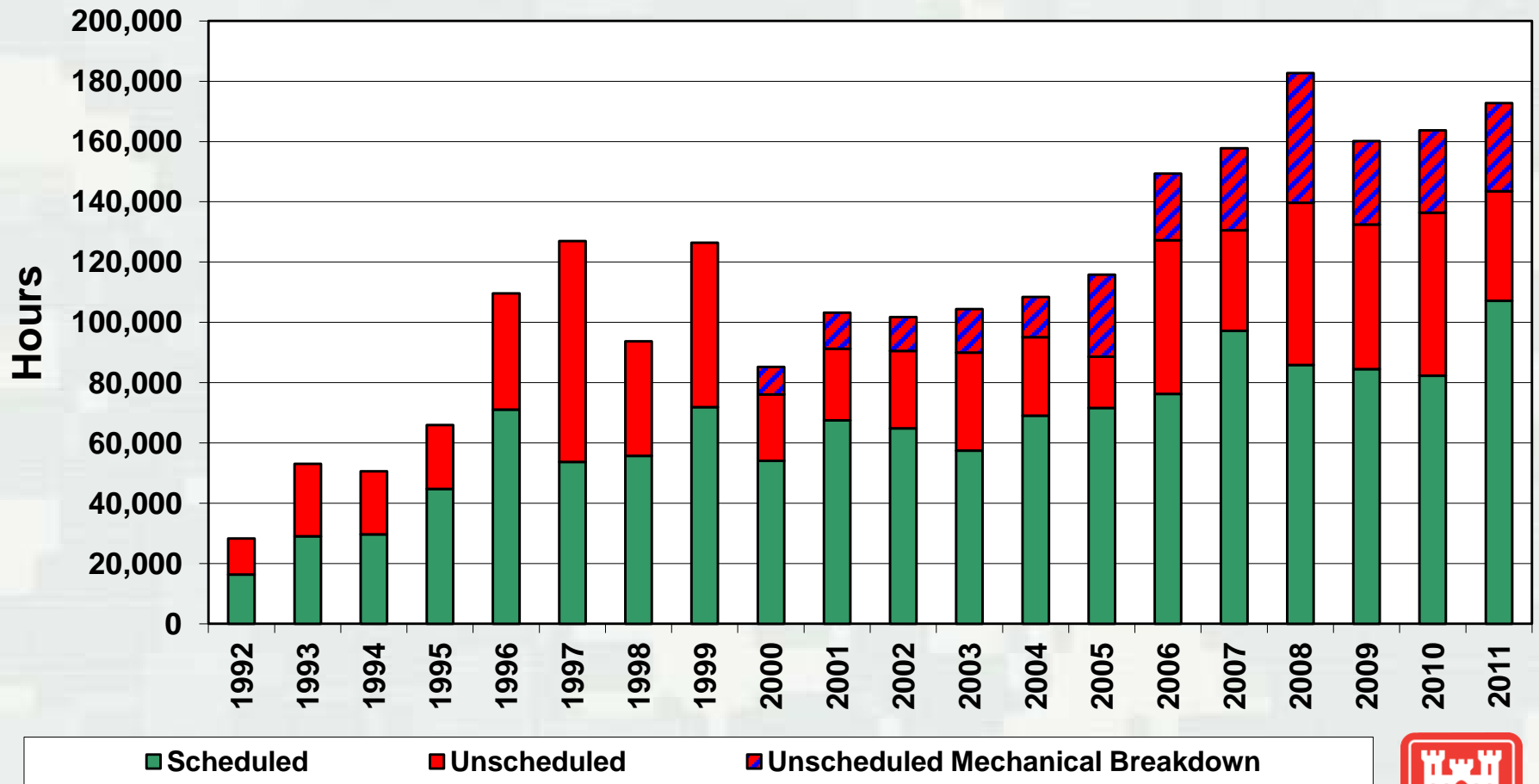
LOCKS AND DAMS 2, 3 AND 4 - MONONGAHELA RIVER, PA																													
CHICKAMAUGA LOCK, TN																													
KENTUCKY LOCK ADDITION, TN RIVER, KY																													
INNER HARBOR NAVIGATION CANAL LOCK, LA																													
TOTAL Constrained Funding	8	25	33	21	24	34	102	118	140	166	170	167	169	136	142	147	112	145	95	110	170	170	170	170	170	170	170	170	170
TOTAL Program	144	170	169	169	169	168	169	168	168	166	170	167	169	136	142	147	112	145	95	110	170	170	170	170	170	170	170	170	170

LaGrange Major Rehabilitation - \$57M → No \$ Capacity Before ~ 2023

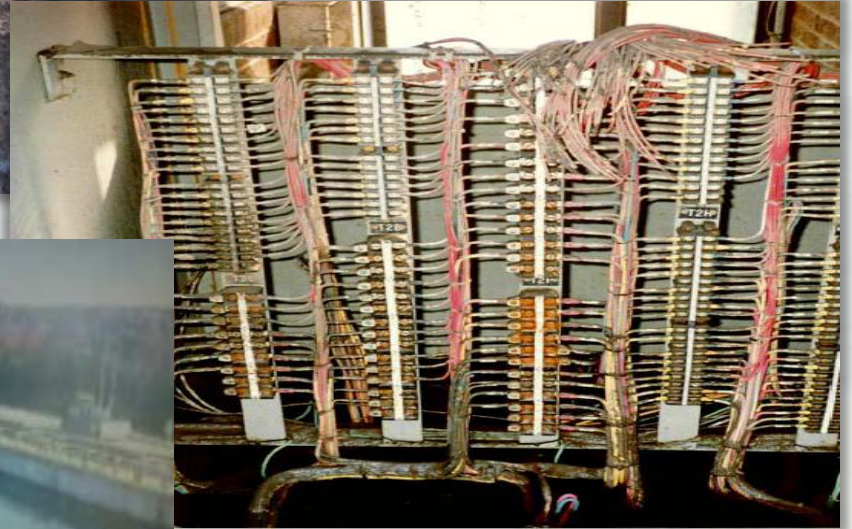


BUILDING STRONG®

Challenge: Aging Infrastructure + O&M Backlog = Increasing Outages at Locks

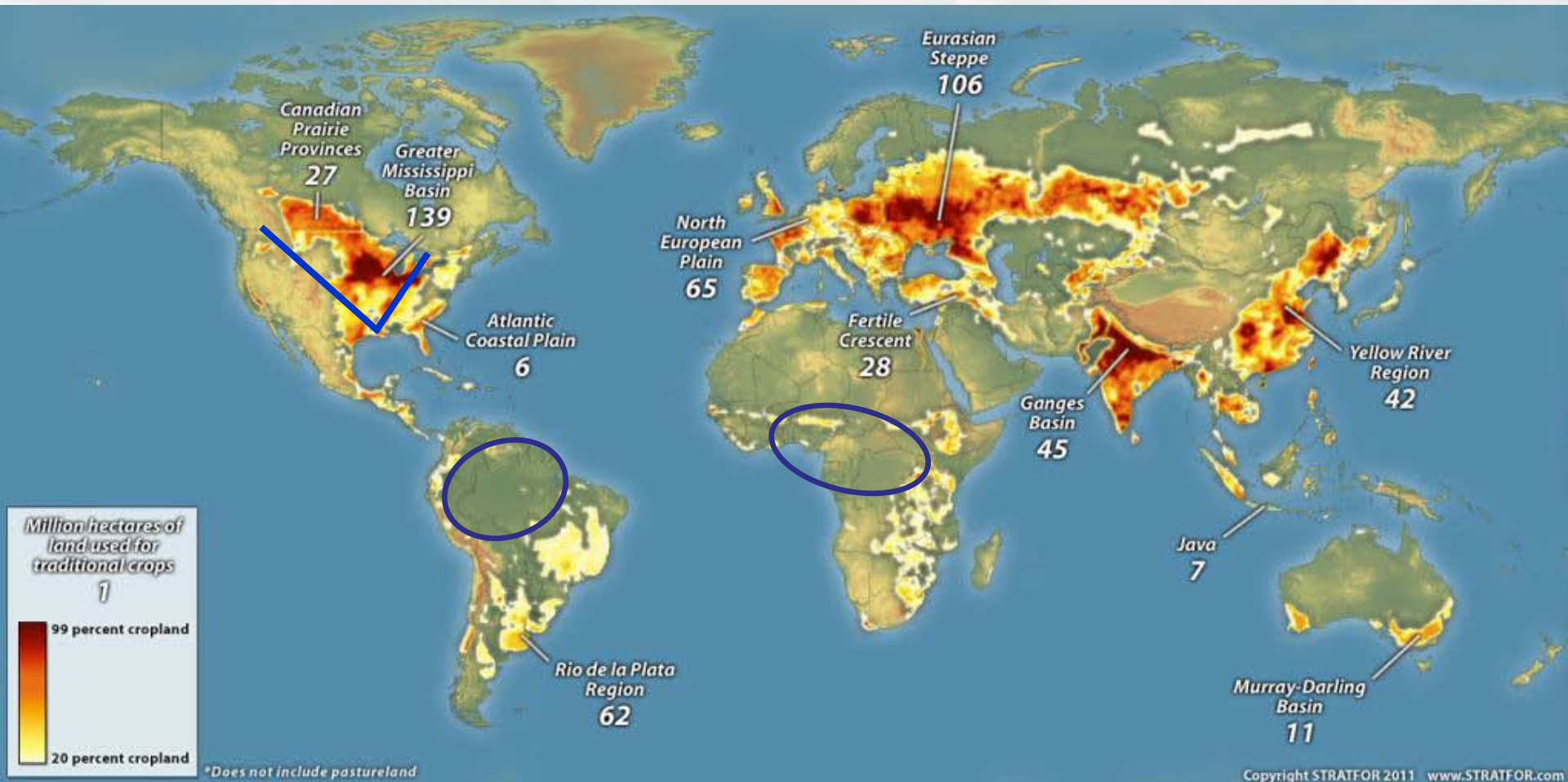


Aging Infrastructure



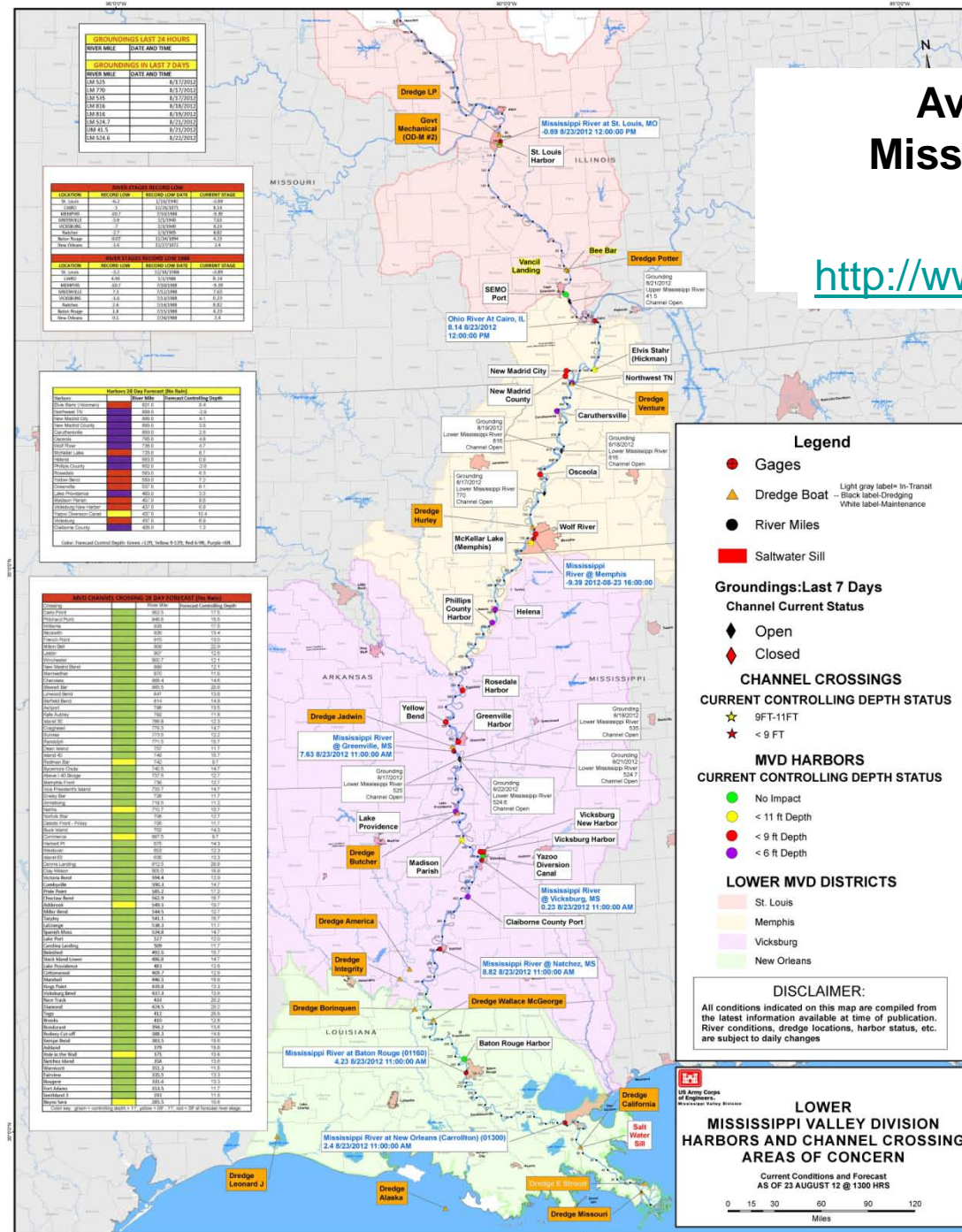
BUILDING STRONG®

Global Agricultural Zones



Available 30 Aug 2012 Mississippi Valley Division Home Page

<http://www.mvd.usace.army.mil/>



In closing...



US Army Corps of Engineers
BUILDING STRONG®