

FY 14 and FY 15 Lock Closures

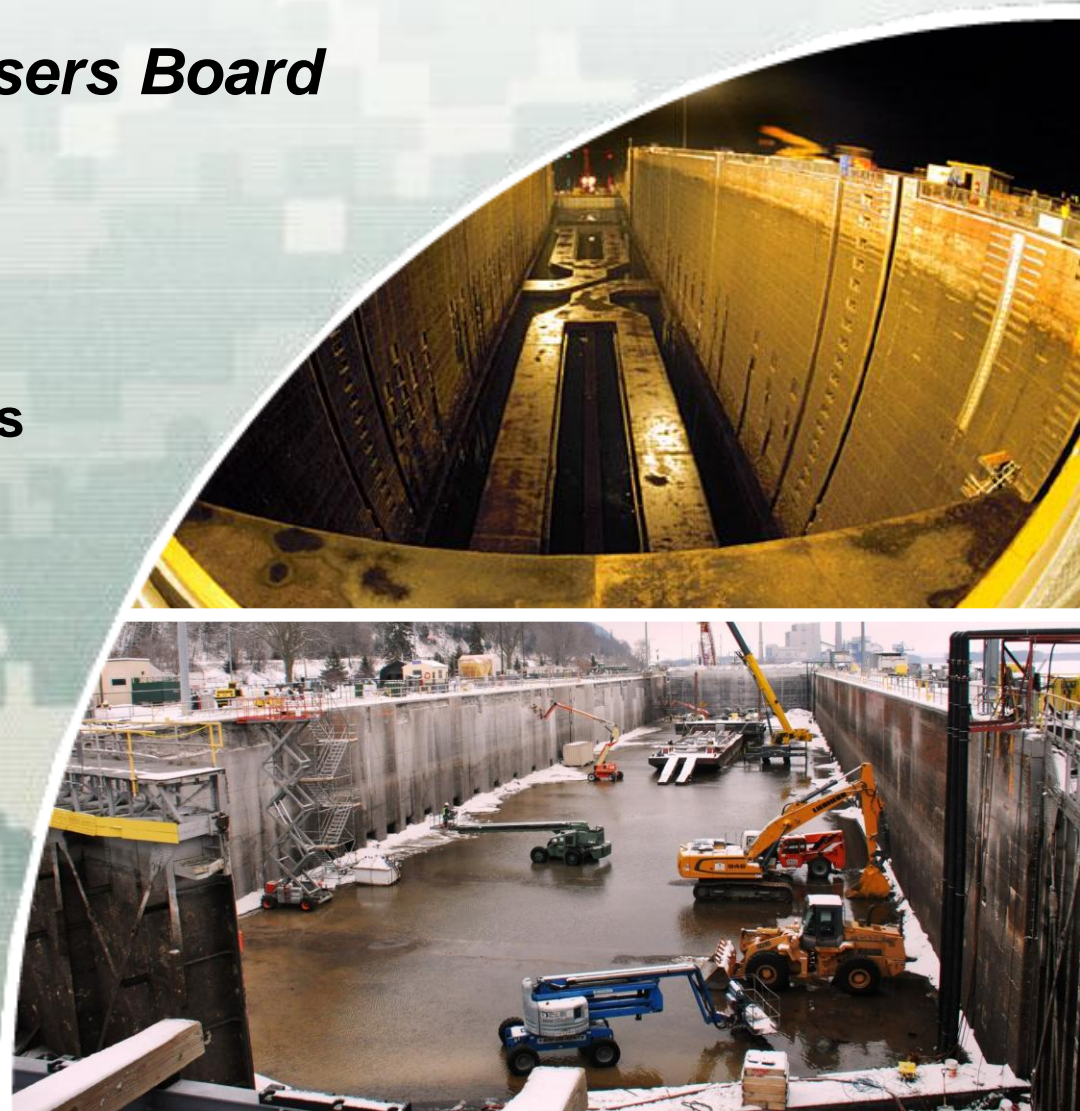
***For Inland Waterways Users Board
Meeting #72***

**Jeffrey McKee
Chief, Navigation & Operations
Branch
HQUSACE**

August 14, 2014



**US Army Corps of Engineers
BUILDING STRONG®**



FY 14 Lock Closures

- ACC/Great Bridge Lock (NAD) Oct 9-11, 2013 due to flood conditions
- Lock 8 – Dec 2, 2013 – Mar 17, 2014 – Dewatering and maintenance/repairs of miter gates, etc.(MVD)
- Mel Price – Dec 28, 2013 to Aug 11, 2014 – Upstream lift gate cable failure. (MVD)
- Inner Harbor Navigation Canal – Jan 4 to 14, 2014 – Miter gate bull gear fracture. (MVD)
- Mississippi River Lock 22 – Jan 7 to Mar 6, 2014 – Dewater and install new miter gates, bubbler system, repairs, etc. (MVD)
- LaGrange Lock – Jan 10 to 16, 2014 – Miter gate allision. (MVD)
- Bayou Sorrel Lock – Jan 28 to 29, 2014 – Replace hydraulic pump (MVD)
- Marseilles Lock – Feb 8 to 10, 2014 – Gate machinery failure. (MVD)
- ACC/Great Bridge Lock - 20-21 Feb, 2014 due to maintenance (NAD)
- Inner Harbor Navigation Canal – Feb 23 to 24, 2014 – Environmental reasons. (MVD)



FY 14 Lock Closures

- Pike Island Lock – Mar 3-27, 2014 – (LRD)
- Harvey Lock – Mar 17 to 31, 2014 – Repair gate machinery (MVD)
- Little Goose Lock – Mar 22 to Apr 21, 2014 – Cracks in down-stream gudgeon assembly-replacement. (NWD)
- Columbia/Snake Rivers Locks (Lower Granite, Lower Monumental, Little Goose, Ice Harbor, McNary, John Day, The Dalles, Bonneville)– Mar 1 to 15, 2014 – Annual maintenance. (NWD)
- Murray Lock (Lock #7) – Intermittent 3 days Mar 2014 –PI/PA Dive Inspection(SWD)
- Dardanelle Lock (Lock #10) – Intermittent 4 days Mar 2014 – PI/PA Dive Inspection(SWD)
- Jim Woodruff Lock - Apr 6-Jun 23, 2014 due to hydraulic cylinder rebuild (SAD)
- Lock 52 – Apr 26 – 29, 2014 – Replace dam wickets.(LRD)
- Smithland River Chamber – Apr 1 to Jun 9, 2014 – Repair culvert valves, mooring buoys, etc. (LRD)



FY 14 Lock Closures

- Bayou Bouef Lock – May 21 to 23, 2014 – Gate repairs. (MVD)
- Schooner Bayou Control Structure – May 22 to 28, 2014 – High salinity levels. (MVD)
- Dashields Lock – May 12-Jun 6 (LRD)
- Newt Graham Lock (#18) – May 2014 – 9 days – Replace SS hydraulic pipes. (SWD)
- Ozark-Jeta Taylor Lock (#12) – May 2014 – 9 days - 7:00 am to 5:30 pm – Replace pintle bearings and resurface miter block contacts. (SWD)
- Lock 18 – May 13, 15, 19, 21, 2014 – 7:00 am to 7:00 pm – Replace miter gates. (SWD)
- 3 Monongahela River Lock- Jun 16-Aug 1, 2014 (LRD)
- Harvey Lock – Jun 26 to 30, 2014 – Gate machinery repairs. (MVD)
- GIWW-East and West Brazos Flood Gates – Jun to Aug 2014 – Intermittent daily closures (<12 hrs/day) to repair machinery & components. (SWD)



FY 14 Lock Closures (In Process)

- Robert C. Byrd Locks – May 5-Aug 1, 2014 (LRD)
- GIWW - East and West Colorado River Locks – Jun to Aug 2014 – Intermittent daily closures (<12 hrs/day) to repair machinery & components. (SWD)
- Whitten Lock – Jul 22 to Aug 22, 2014 – Closed for maintenance. (SAD)
- Montgomery Lock – Jul 23 to Aug 21, 2014 – Closed for maintenance. (SAD)
- Rankin Lock - Jul 23 to Aug 21, 2014 – Closed for maintenance. (SAD)
- Coffeerville and Demopolis Lock – Jul 25 to Aug 24, 2014 – Closed for maintenance. (SAD)
- Dashields Lock –Aug 11-Sept 19, 2014 – (LRD)
- Lock 52 Main Chamber – Aug 18 to 29, and Sep 2 to 12, 2014 – Repair chamber cells and upper guide wall. (LRD)
- Upper Miss River Lock closures due to high water – various times Jun to Aug 2014



Future Lock Closures

- Lock 52 Aux Chamber – Sep 22 to Oct 19, 2014 – Repair lower guide wall. (LRD)
- WD Mayo Lock (#14) – Aug to Sep 2014 – 22 days – Dewater and replace pintle bearings. (SWD)
- Robert C. Byrd Locks – Sep 8 – Nov 7, 2014 (LRD)
- Canaveral Lock – Working Environmental Issues 30-day closure sometime late fall, early winter 2014 (SAD)
- Morgantown Locks- Oct 6 - Nov 7, 2014 – (LRD)
- Harvey Lock – Oct 27 to Nov 17, 2014 – gate machinery repairs. (MVD)
- T. J. O'Brien – Nov 3 to Dec 17, 2014 – Repair lower sector gates (MVD)
- Bayou Sorrel Lock – Feb thru Apr, 2015 – North sector gate and concrete repairs. (MVD)
- Bayou Sorrel Lock – Apr thru May, 2015 – South sector gate and concrete repairs. (MVD)
- Columbia/Snake Rivers Locks (Lower Granite, Little Goose, Lower Monumental, Ice Harbor, McNary) – Mar 7 to Apr 4, 2015 – Annual maintenance. (NWD)



Future Lock Closures

- Columbia River Locks (John Day, The Dalles, Bonneville) – Mar 7 to 21, 2015 – Annual maintenance. (NWD) Wheeler Lock – Mar 17- Apr 28, 2015 – (LRD)
- Chouteau Lock (#17) – May to Jun 2015 – 10 days - Replace SS hydraulic pipes (SWD)
- Wilson Lock – May 13 - Jun 30, 2015 – (LRD)
- Racine Lock – May 25 - Jul 24, 2015 – (LRD)
- Belleville Lock – May 25 - Jul 24, 2015 – (LRD)
- Old Hickory Lock – Jul 14 – Aug 13, 2015 – (LRD)
- Inner Harbor Navigation Canal – Jul thru Aug, 2015 – Miter gate replacement. (MVD)
- Webber Falls - Aug to Sep 2015 – 21 days – Dewater and replace pintle bearings and Miter Gate structural repairs. (SWD)
- Montgomery Point Lock - Aug to Sep 2015 – 22 days – Dewater and replace river wall gudgeon pins and bushings (SWD)
- Newt Graham Lock (#18) – Apr 2016 – 7 days Repair Miter Gate Directional Valve (SWD)



Future Lock Closures

- Webber Falls Lock (#16) – Aug-Sep 2016, 22 days – Repair to downstream Miter Gate (SWD) Newt Graham Lock (#18) – Sep 2016 – 3 days PI/PA Dive Inspection-Intermittent Closures (SWD)
- David D. Terry Lock (#6) – Sep 2016 – 3 days PI/PA Dive Inspection-Intermittent Closures (SWD)
- Columbia-Snake Rivers Locks – Dec 2016 to Mar 2017 – 12 weeks - Replace lock gates and lock maintenance. (NWD)

