

Olmsted Locks and Dam

Inland Waterways Users Board Meeting #82

MR. Michael Braden, PE, PMP, CCE
CHIEF, Olmsted Division
Louisville District
24 February 2017



"The views, opinions and findings contained in this report are those of the authors(s) and should not be construed as an official Department of the Army position, policy or decision, unless so designated by other official documentation."

BUILDING STRONG[®]
and Taking Care of People!



US Army Corps
of Engineers[®]



U.S. ARMY

Olmsted

Bottom Line Up Front

✓ Current Schedule: **Ahead of Schedule**

- 2018 (Project Operational)
- 2022 (Project Complete)

✓ Current Cost: **Under Budget**

- TEP **(\$330M+)** – Total Estimated Price (updated monthly)
- TPCS **(\$153M)** – Total Project Cost Summary (reflects FY17 update)

✓ Keys:

1. Receiving **efficient funding** (annual capability) has allowed the PDT to effectively plan and execute our annual work plan.
2. Advantageous river conditions have allowed the work to expand beyond the contractual low water season (15 Jun – 30 Nov).

Olmsted Project Overview - Status

Fixed Weir

Locks & Approach Walls

Operations Facilities

- Award 2 Feb 2017 (A)
- Amount \$10.3M
- Direct Steel (WOSB)

Resident Engineers Office

Completed

Under Contract

Future

Wicket Lifter

	Barge (MDC)	Crane (LRL)
Award	29 Jul 2016 (A)	02 Sep 2016 (A)
Amount	\$8.4M	\$4.2M

River Dikes

Dike #4 complete
Task Order No. 2 (Dike #1, #2, & #3) issued 14 Feb 2017 (A)

Left Boat Abutment

- Cofferdam complete
- Tremie Rebar Mat complete
- Bracing complete
- Unwatering scheduled LWS 2017

Dam Access Road

Navigation Pass

- All Paving Blocks set/complete
- NP Shells (thru No. 10) set/complete
- PB Lifting Frame Disassembled & Scrapped
- NP Lifting Frame (1 of 2) D & S
- NP-11 scheduled for early LWS 17
- NP-12A (last shell) is LWS 17 identified stretch goal

Tainter Gates

- TG-1, TG-2, TG-3 and TG-4 erected
- TG-5 delivery accelerated to HWS 17
- Service Bridge Nos. 5 & 6 precast in-progress
- TW-1A, TW-1B precast in-progress

BUILDING STRONG[®]
and Taking Care of People!



US Army Corps of Engineers



2017 High Water Season Images



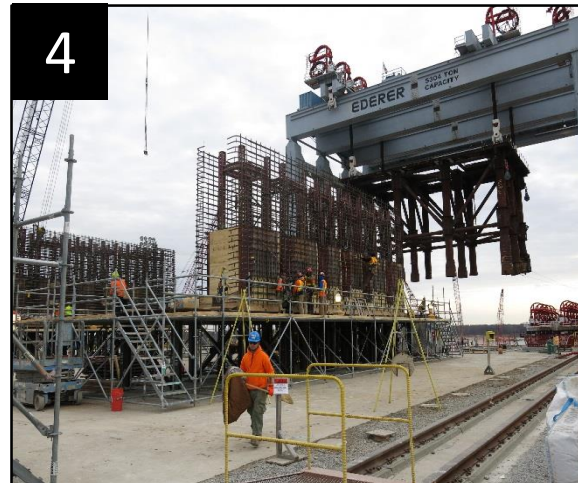
1
TG No. 4 Direct Connect Hydraulic Cylinders



2
Installation of Service Bridge Nos. 3 & 4



3
River Dike No. 4



4
TW-1A/1B



5
TG Control Cabinet

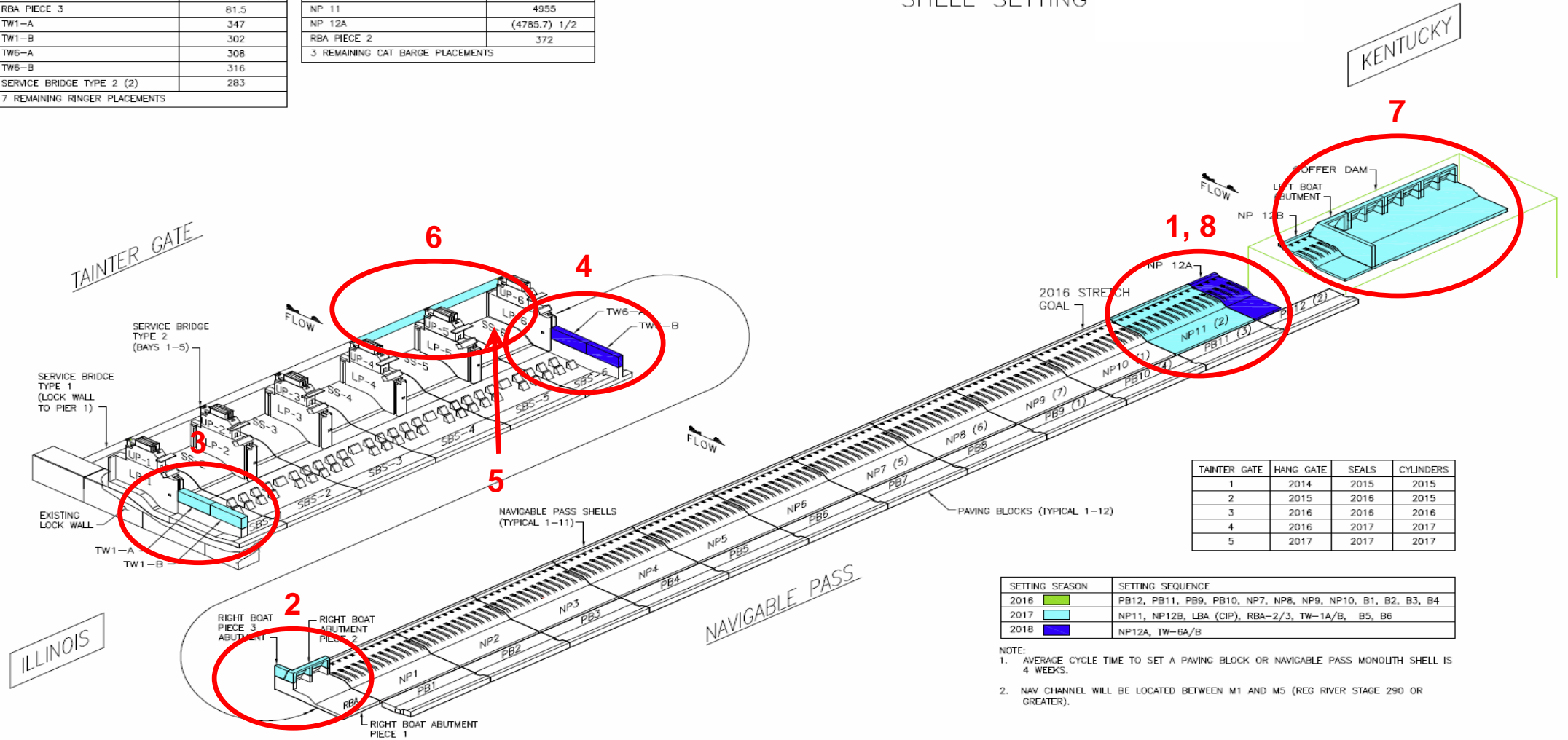
BUILDING STRONG[®]
and Taking Care of People!

2017 Plan-to-Complete

RINGER BARGE PLACEMENTS	
SHELL	WEIGHT (TONS)
RBA PIECE 3	81.5
TW1-A	347
TW1-B	302
TW6-A	308
TW6-B	316
SERVICE BRIDGE TYPE 2 (2)	283
7 REMAINING RINGER PLACEMENTS	

CAT BARGE PLACEMENTS	
SHELL	WEIGHT (TONS)
NP 11	4955
NP 12A	(4785.7) 1/2
RBA PIECE 2	372
3 REMAINING CAT BARGE PLACEMENTS	

SHELL SETTING



TAINER GATE	HANG GATE	SEALS	CYLINDERS
1	2014	2015	2015
2	2015	2016	2015
3	2016	2016	2016
4	2016	2017	2017
5	2017	2017	2017

SETTING SEASON	SETTING SEQUENCE
2016	PB12, PB11, PB9, PB10, NP7, NP8, NP9, NP10, B1, B2, B3, B4
2017	NP11, NP12B, LBA (CIP), RBA-2/3, TW-1A/B, B5, B6
2018	NP12A, TW-6A/B

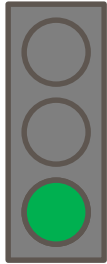
- NOTE:
1. AVERAGE CYCLE TIME TO SET A PAVING BLOCK OR NAVIGABLE PASS MONOLITH SHELL IS 4 WEEKS.
 2. NAV CHANNEL WILL BE LOCATED BETWEEN M1 AND M5 (REG RIVER STAGE 290 OR GREATER).

BUILDING STRONG[®]
and Taking Care of People!



Olmsted Project

Time and Cost Scorecard – Dec 2016



Expenditures (thru Dec)

Planned (BCWS)	\$2.146B
Earned (BCWP)	\$2.493B
Actual (ACWP)	\$2.312B

BCWP: Reports the value (based on % complete) of the work performed to date.

Target:

Actual as compared to Planned: (<1% = Green) (>1%and <3% = Yellow) and (>3% = Red)

Schedule (thru Dec)

	(PACR)/(Current)
Project Complete	April 2026/Mar 2022
Dam Operational	Oct 2022/Oct 2018

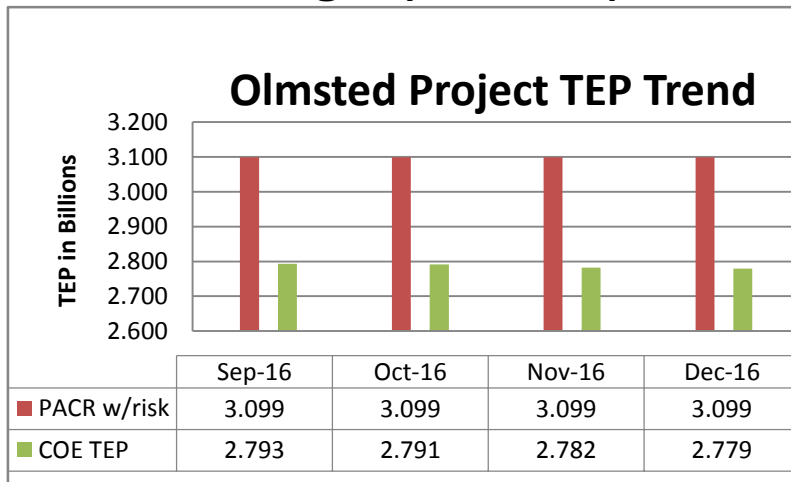
Measures: Planned project completion and Dam contract operational dates

Target:

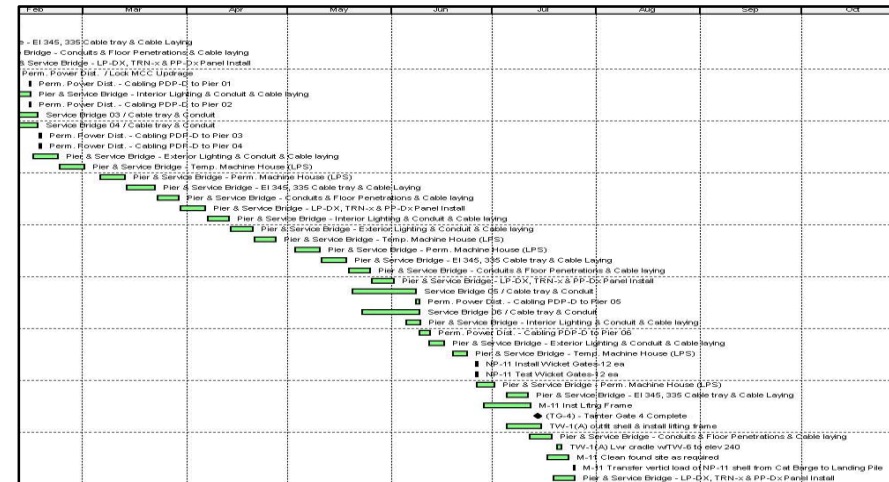
Green: Current = PACR-12 months
 Yellow: Current = PACR-11 months to PACR-7 months
 Red: Current = PACR-6 months to after PACR date



Budget (thru Dec)



Major Activity Schedule



BUILDING STRONG[®]
and Taking Care of People!

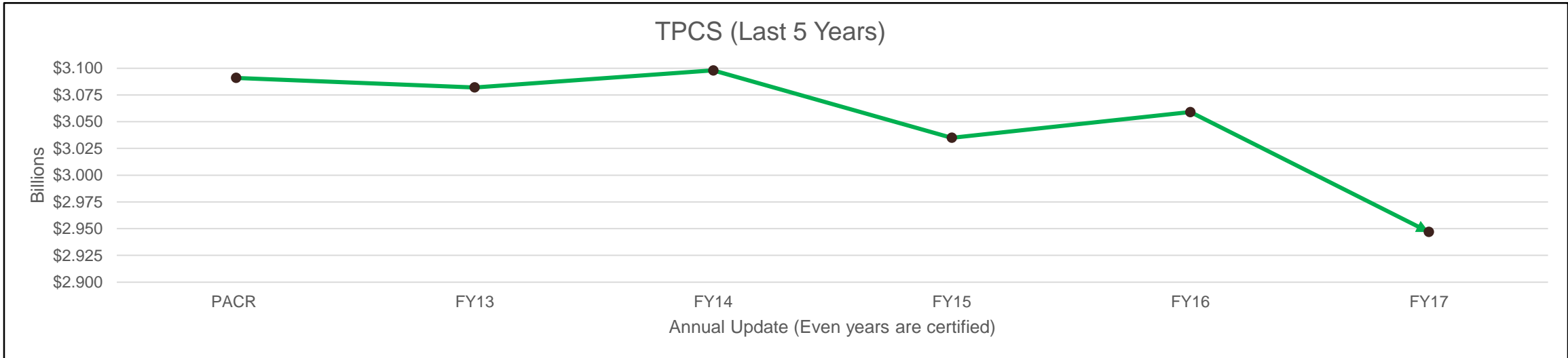


US Army Corps of Engineers

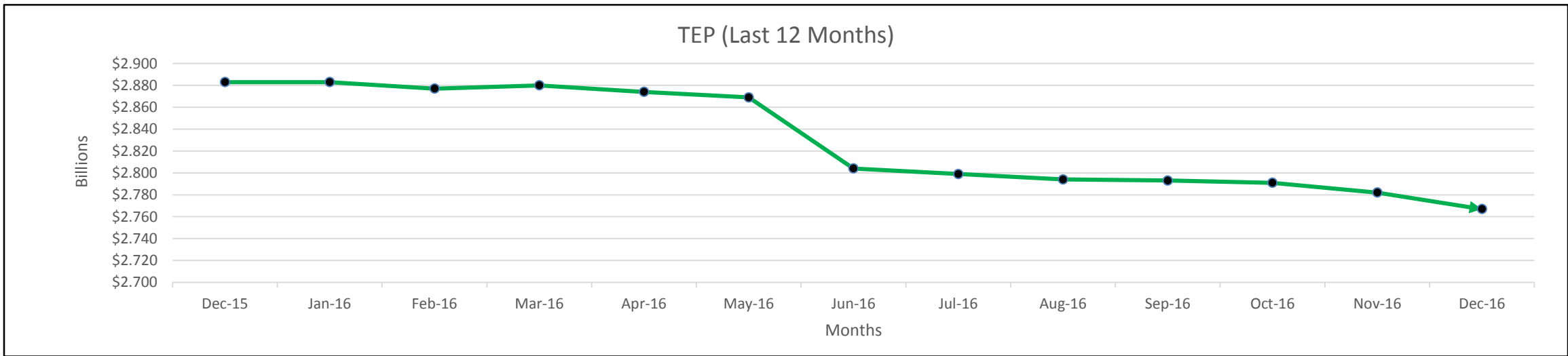


12 Month Cost Trends

TPCS (Last 5 Years)



TEP (Last 12 Months)



BUILDING STRONG[®]
and Taking Care of People!



US Army Corps of Engineers



Discussion



Army Strong
Building Strong
Finishing Strong

BUILDING STRONG[®]
and Taking Care of People!