

# Olmsted Project Update Inland Waterways Users Board Meeting No. 84

MR. MIKE BRADEN, PE, PMP, CCE  
CHIEF, Olmsted Division  
Louisville District  
19 July 2017



*"The views, opinions and findings contained in this report are those of the authors(s) and should not be construed as an official Department of the Army position, policy or decision, unless so designated by other official documentation."*

**BUILDING STRONG®**  
and Taking Care of People!



**US Army Corps  
of Engineers**



## Olmsted Bottom Line Up Front

### ✓ Current Schedule: **Ahead of Schedule**

- 2018 (Project Operational)
- 2022 (Project Complete)

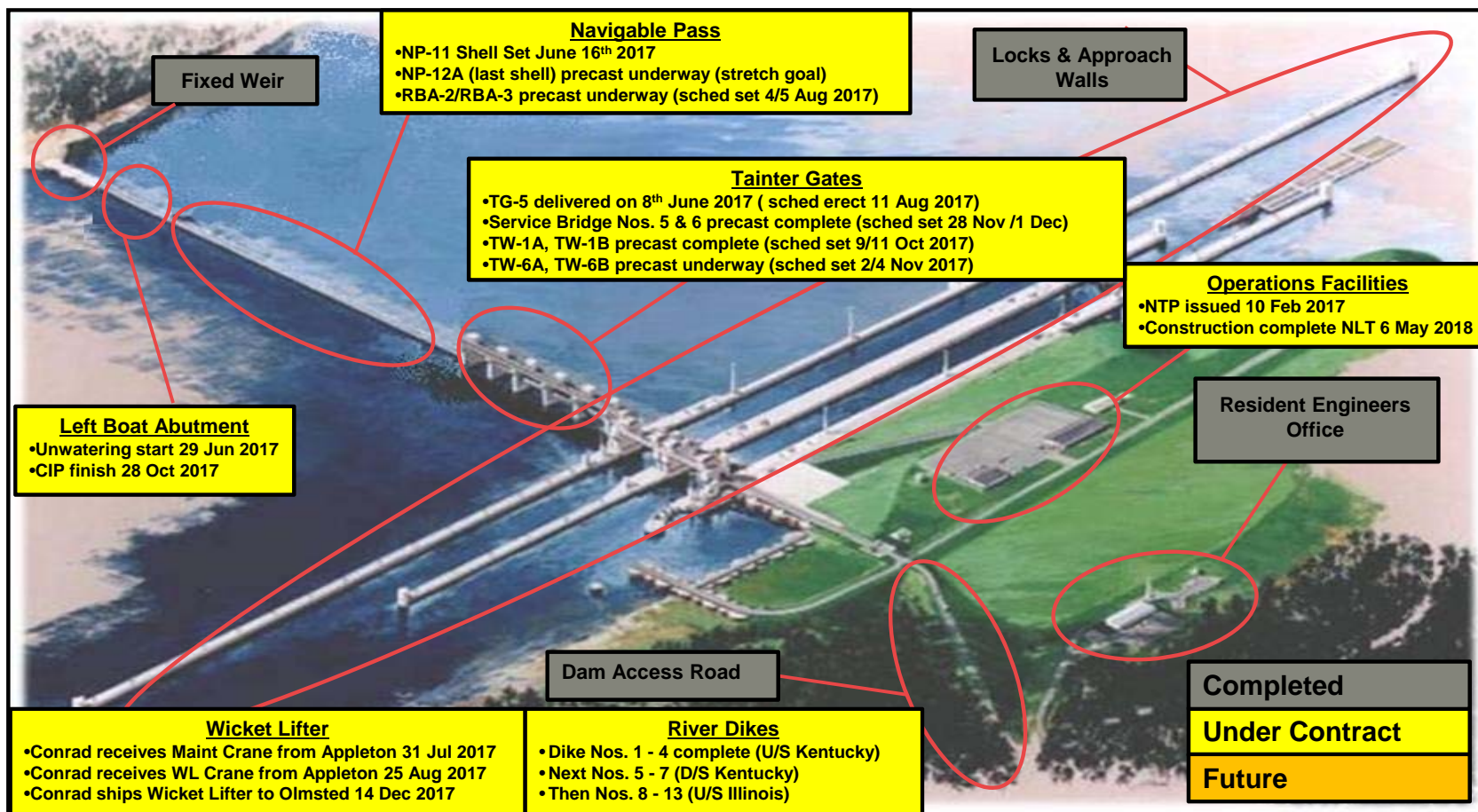
### ✓ Current Cost: **Under Budget**

- TEP **(\$336M+)** – Total Estimated Price (updated monthly)
- TPCS **(\$153M)** – Total Project Cost Summary (reflects FY17 update)

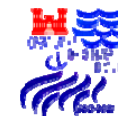
### ✓ Keys:

1. Efficient funding (annual capability) has allowed the PDT to effectively plan and execute our annual work plan.
2. Advantageous river conditions have allowed the work to expand beyond the contractual low water season (15 Jun – 30 Nov).

## Olmsted Project Overview - Status



**BUILDING STRONG<sup>®</sup>**  
and Taking Care of People!





## 2017 High Water Season Images



NP-11 Set Down (Approx. 60' remaining gap)



Left Boat Abutment (LBA) Cofferdam



RBA-2 (Precast complete)



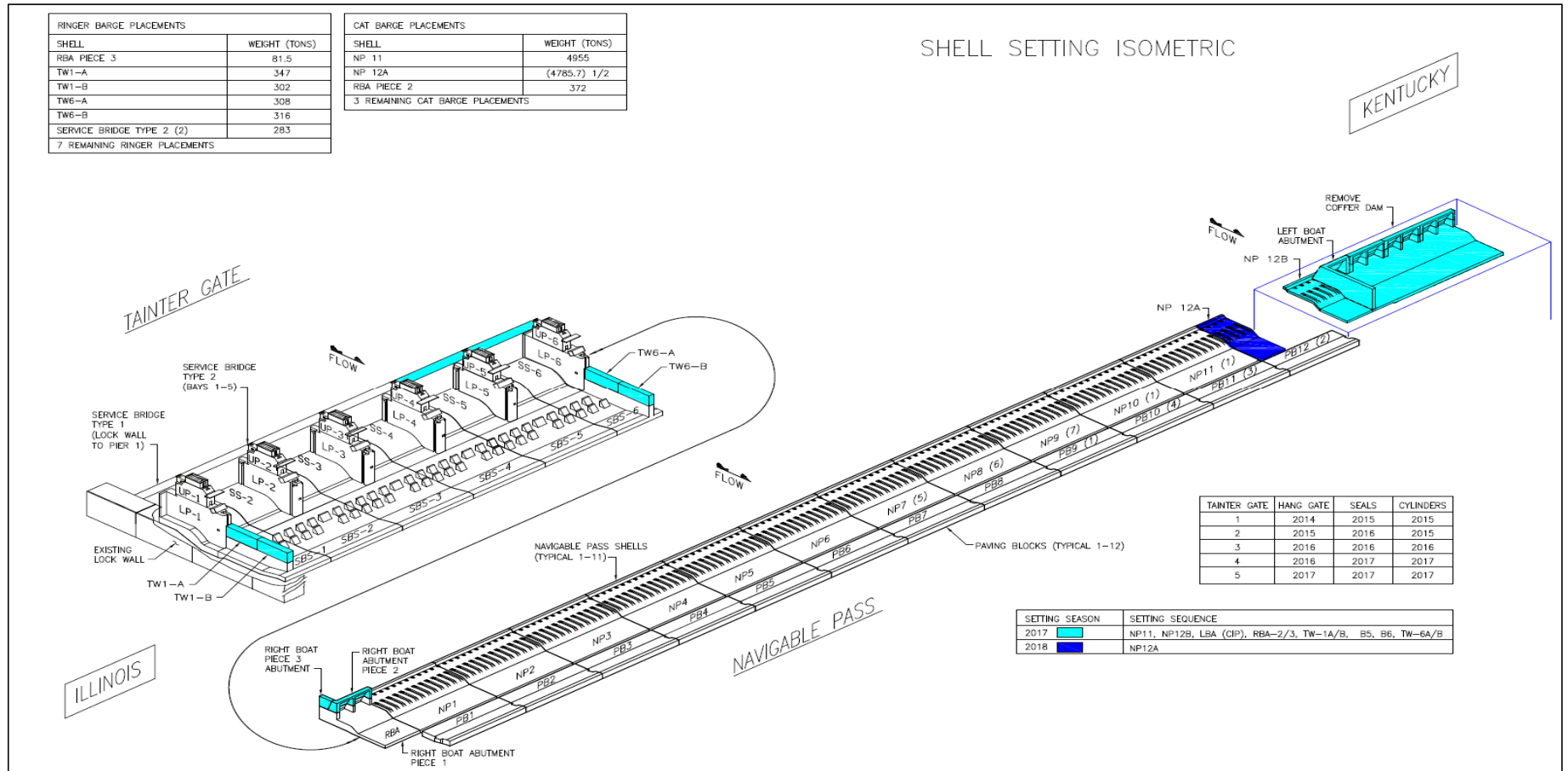
Nesting Osprey (CAT barge)



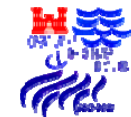
TG-5 (Locking thru Kentucky)

**BUILDING STRONG®**  
and Taking Care of People!

## 2017 Plan-to-Complete



**BUILDING STRONG®**  
and Taking Care of People!



# Olmsted Project

## Time and Cost Scorecard – May 2017



### Expenditures (thru May)

Planned (BCWS)	\$2.208B
Earned (BCWP)	\$2.561B
Actual (ACWP)	\$2.372B

**BCWP:** Reports the value (based on % complete) of the work performed to date.

#### Target:

Actual as compared to Planned: ( <1% = Green) (>1% and <3% = Yellow) and (>3% = Red)

### Schedule (thru May)

(PACR)/(Current)

Project Complete	April 2026/Mar 2022
Dam Operational	Oct 2022/Oct 2018

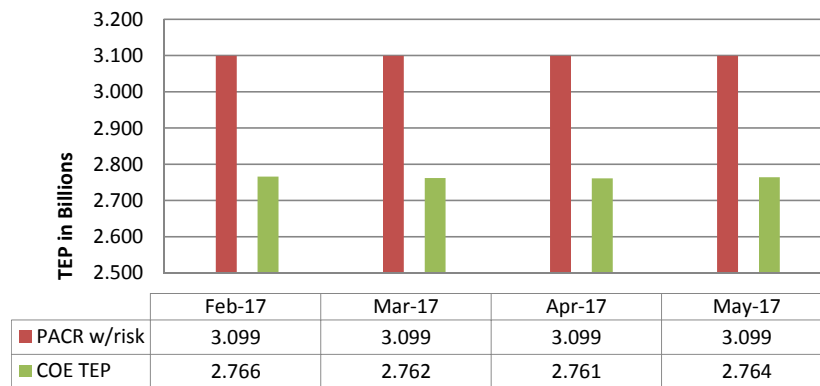


**Measures:** Planned project completion and Dam contract operational dates

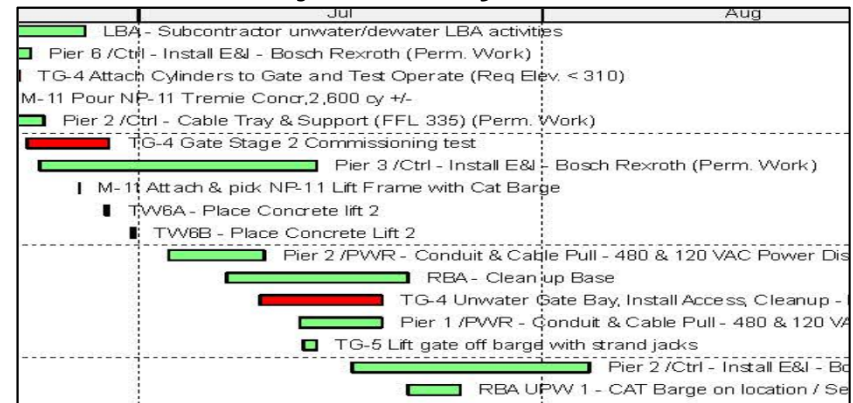
#### Target:

Green: Current = PACR-12 months  
Yellow: Current = PACR-11 months to PACR-7 months  
Red: Current = PACR-6 months to after PACR date

### Budget (thru May)



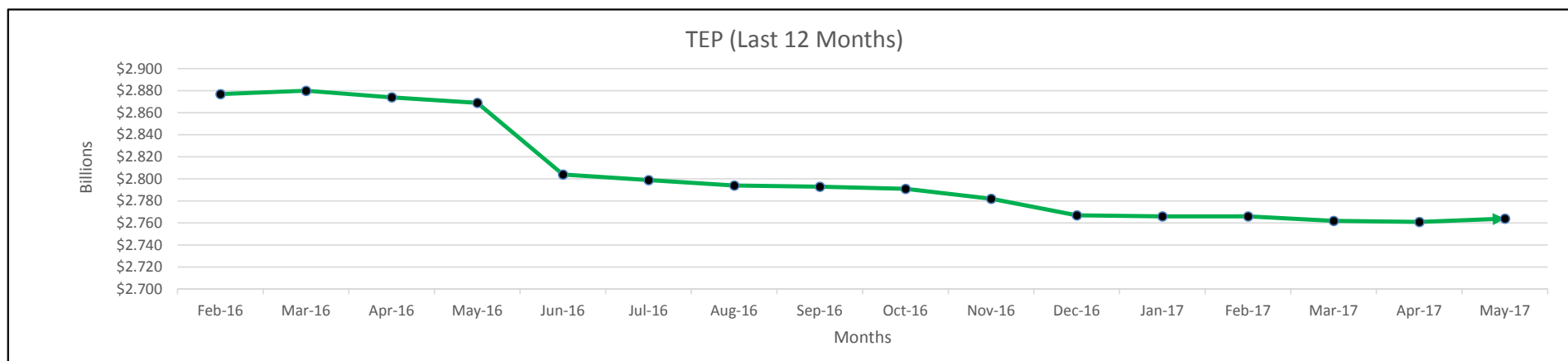
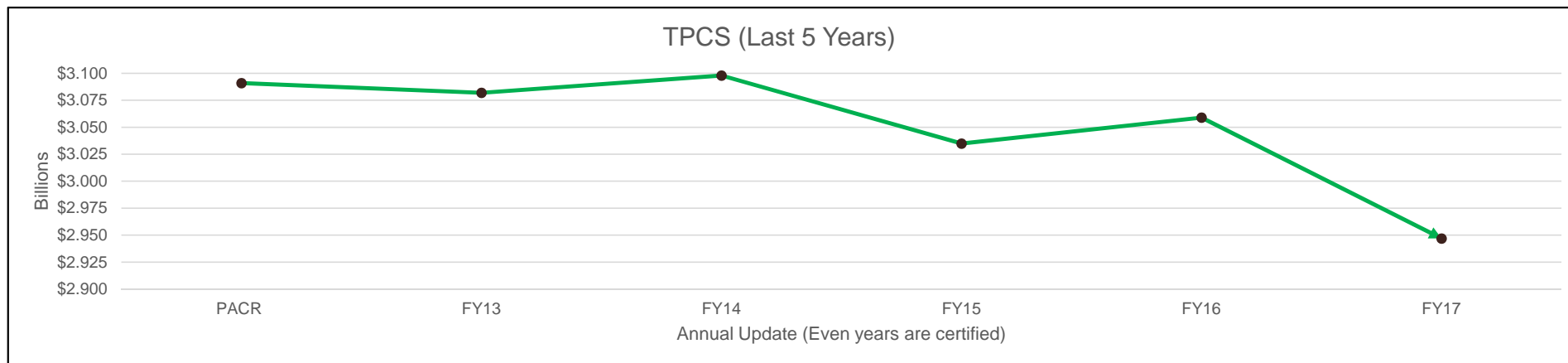
### Major Activity Schedule



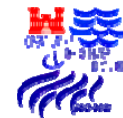
**BUILDING STRONG®**  
and Taking Care of People!



## 12 Month Cost Trends



**BUILDING STRONG®**  
and Taking Care of People!



## Olmsted Finishing Strong

- ✓ Equipment Disposition
  - In excess of \$150M (original acquisition value) and over 10,000 discrete items
  - Pursuing a deviation to FAR and FMR regulatory guidance to obtain a “direct sale” authority in addition to existing reutilization, screening and GSA disposal methods to **maximize efficiency and increase ROI**
  - Received request for “drafting services” from House Appropriations subcommittee
- ✓ “Out Year” Marine Work Packages
  - Advancing J&As to advance various marine scopes of work concurrent with Dam construction and within operational footprint
  - Miter Gate Repairs and Culvert Flushing (1<sup>st</sup> of 3) **approved**.
  - Upstream Mooring Cells (4) construction and partial L&D 53 demolition in process.
  - Benefits include advancing project “completion”, mitigating post operational “navigation lane” impacts and utilizing existing materials, skilled labor and equipment

**BUILDING STRONG®**  
*and Taking Care of People!*





## Discussion



Army Strong  
Building Strong  
*Finishing Strong*

**BUILDING STRONG®**  
*and Taking Care of People!*

