

OLMSTED L&D TRANSITION

Inland Waterways Users Board
Meeting No. 88
28 August 2018

Waylon D. Humphrey, PE
Deputy Chief of Operations



"The views, opinions and findings contained in this report are those of the authors(s) and should not be construed as an official Department of the Army position, policy or decision, unless so designated by other official documentation."

BUILDING STRONG®

and Taking Care of People!



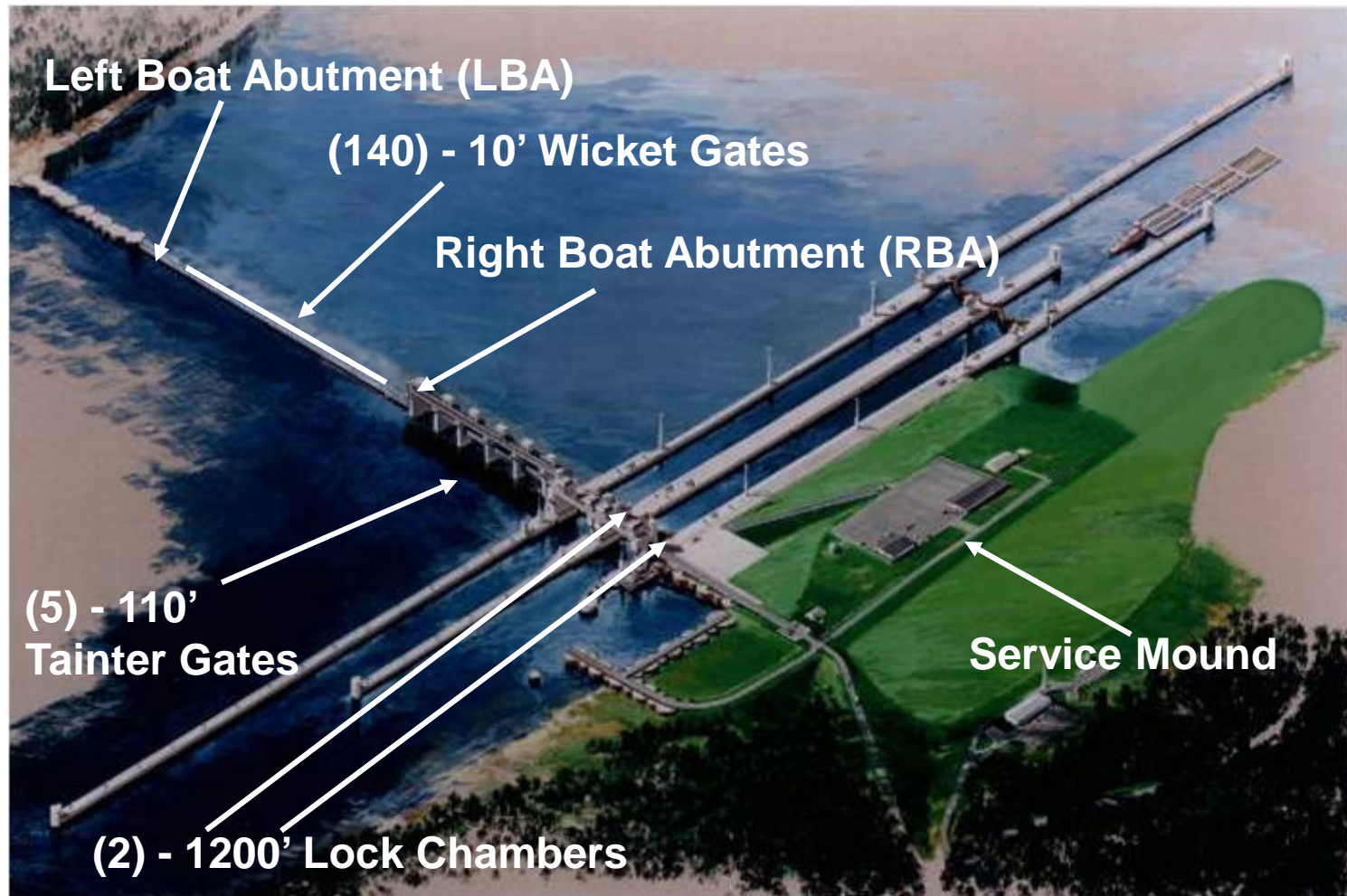
**US Army Corps
of Engineers®**



AGENDA

- Olmsted Terminology
- Transition Team
- Olmsted Operational Schedule
- How Olmsted Will Operate
- Operator Training and Wicket Testing
- Olmsted Navigation Impacts
- Summary

OLMSTED TERMINOLOGY



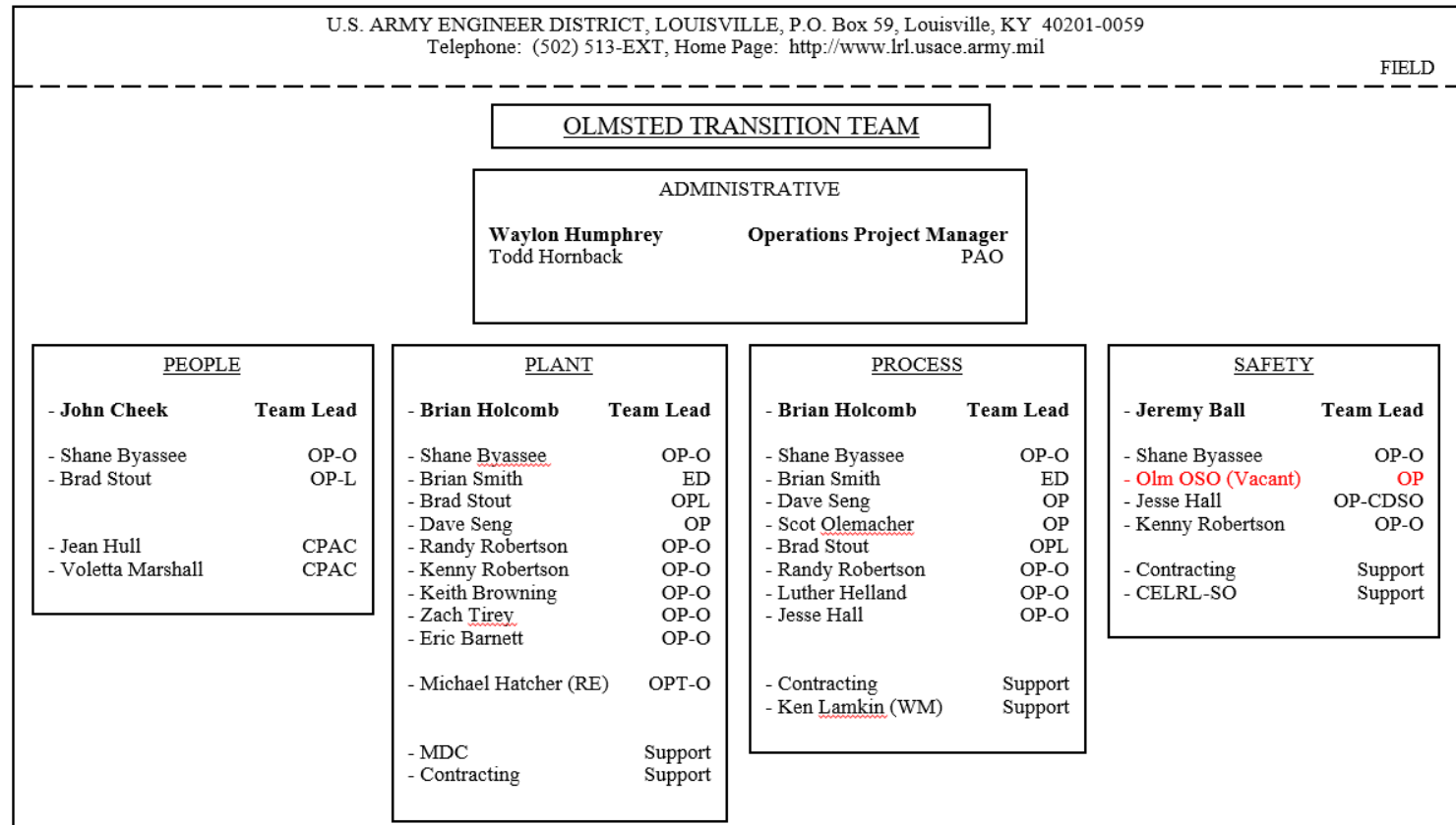
BUILDING STRONG®
and Taking Care of People!



OLMSTED TRANSITION TEAM

4

- Committed to bringing Olmsted L&D operational as soon as possible.



26 April 2018




Page 1

BUILDING STRONG[®]
and Taking Care of People!



OLMSTED OPERATIONAL SCHEDULE

5

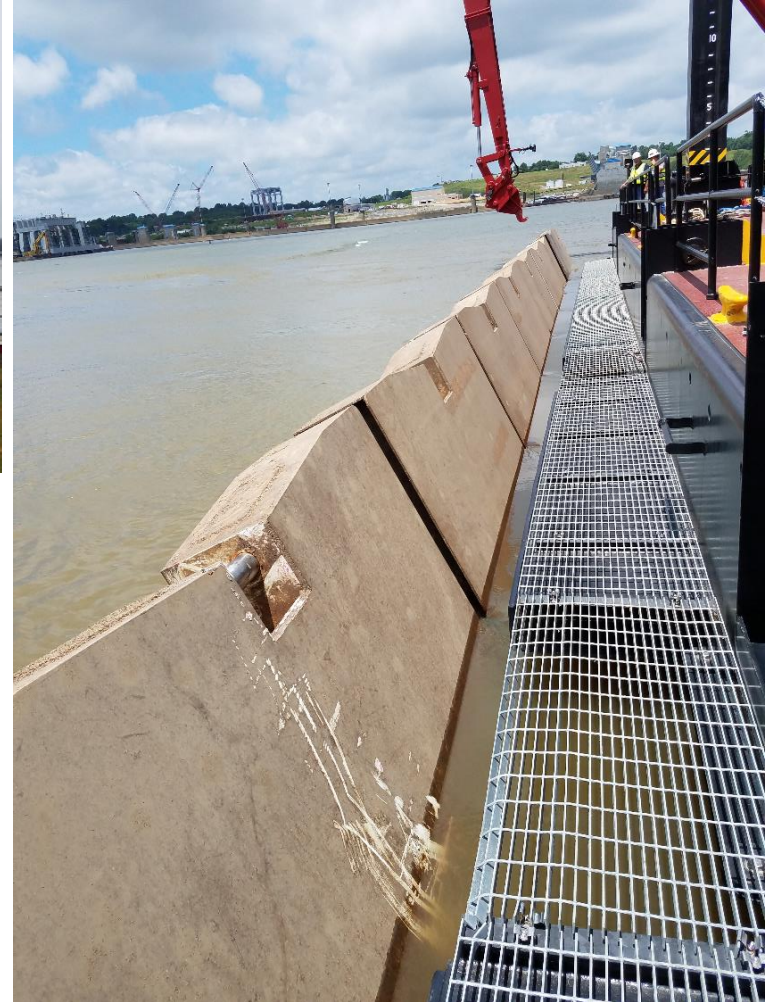
			HWS 2017							LWS 2018						HWS 2018		
	Activity Description	Start and Finish		Dec-17	Jan-18	Feb-18	Mar-18	Apr-18	May-18	Jun-18	Jul-18	Aug-18	Sep-18	Oct-18	Nov-18	Dec-18	Jan-19	Feb-19
1	L&D 52 Wicket Hole Repair and Wicket Maintenance		2/1/2018	L&D 52 Hole Repair and Maintenance														
2	L&D 52 Operational Priority		6/15/2018	Continue to Operate L&D 52 as First Priority During Low Flow Conditions														
3	All Dam Monoliths Installed	Dec-17		*														
4	Olmsted Wicket Lifter (OWL) Delivery	2/18/2017				*												
5	OWL Function Testing & Commissioning	2/18/2018	7/1/2018			OWL T&C												
6	Attempt Olmsted Operations if Catastrophic Failure at L&D 52	7/1/2018	10/31/2018								Olmsted Functional if L&D 52 Fails							
7	USACE Operations Training and Wicket Testing (Low Water*)	7/1/2018	10/31/2018								USACE Operations Training and Wicket Testing							
8	Olmsted Ribbon Cutting Ceremony	8/29/2018										*						
9	Olmsted Operations begins (Upon Completion of Training)	10/15/2018													Olmsted 'Operable'			
						LOW RISK			MODERATE RISK			HIGH RISK						

BUILDING STRONG®
and Taking Care of People!



HOW OLMSTED WILL OPERATE

6



BUILDING STRONG®
and Taking Care of People!



OPERATOR TRAINING & WICKET TESTING⁷

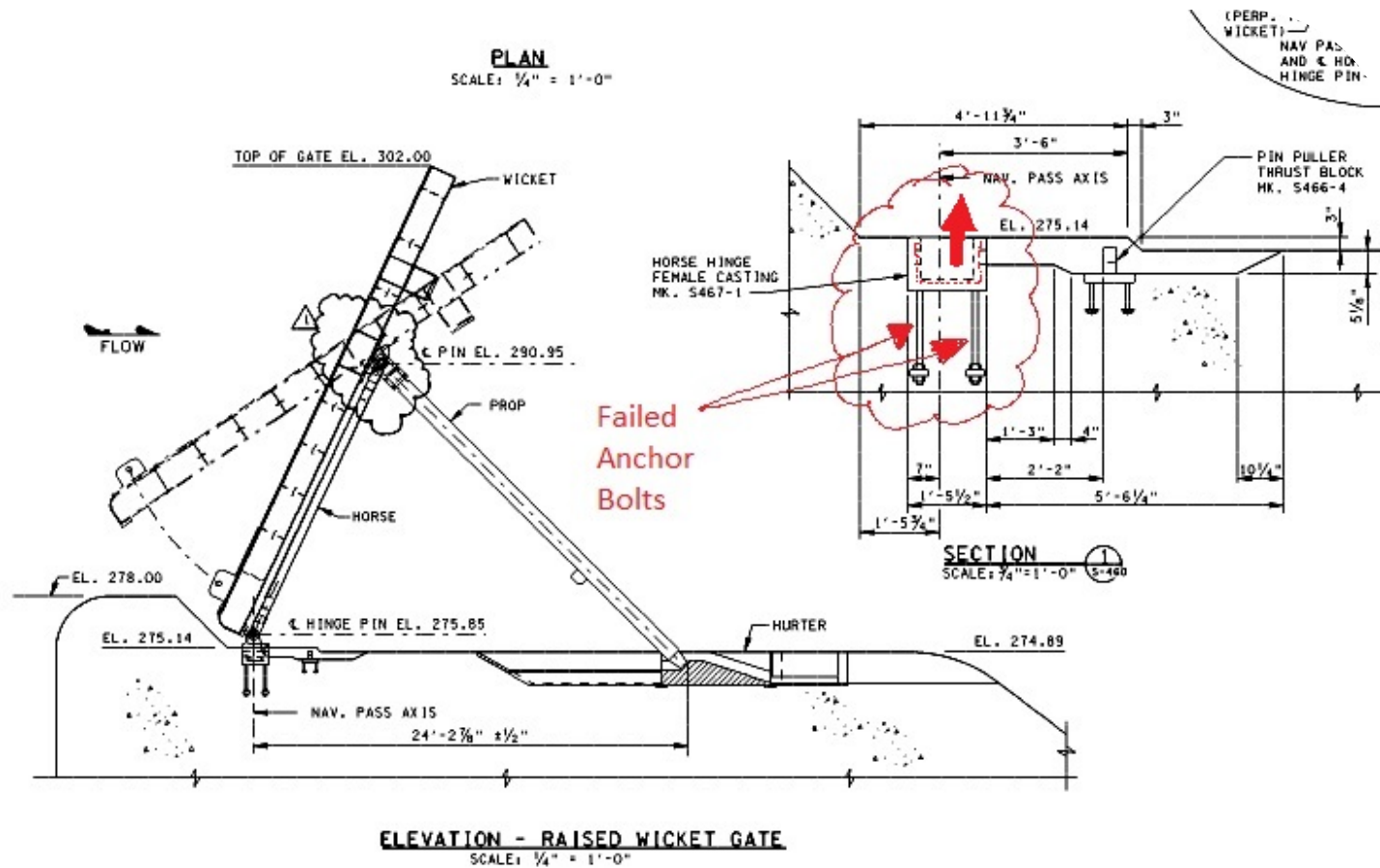


BUILDING STRONG[®]
and Taking Care of People!



WICKET #32 ANCHORAGE FAILURE

8



BUILDING STRONG[®]
and Taking Care of People!



OLMSTED NAVIGATION IMPACTS

9

- Installation of Floating Guide Wall Curtains
- Navigation Signage
- Demolition of Locks and Dam 53
- Land Chamber LWS 2018 Dewatering
- Lighting Installation & Upgrades
- Pressure Grouting Sheet Pile Cutoff Walls
- Patching of Bleed Holes and Spall Repair
- Completion of Isolation Joints (3)
- Fixed Weir – Permanent Anchor
- Left Boat Abutment – Final Concrete



Fixed Weir Concrete – Permanent Anchor

BUILDING STRONG®
and Taking Care of People!



Left Boat Abutment – Final Concrete Placement



SUMMARY

- Olmsted Transition Team working to ensure functionality as soon as possible; prioritizing safety and reliability.
- Critical failure of L&D 52 prior to minimal crane operator training & completion of remaining Olmsted construction activities makes operating Olmsted a risk informed decision.
 - Employee Safety
 - Infrastructure Risk
- Remaining Olmsted construction activities during ongoing operations and head pressure of upper pool may impact navigation.

DISCUSSION AND QUESTIONS

11



BUILDING STRONG®
and Taking Care of People!

