

District Responsibilities on the Illinois Waterway

Major General Robert F. Whittle, Jr.
Commander, Great Lakes & Ohio Rivers Division

Presentation to:
Inland Waterways Users Board
Meeting No. 93
February 19, 2020



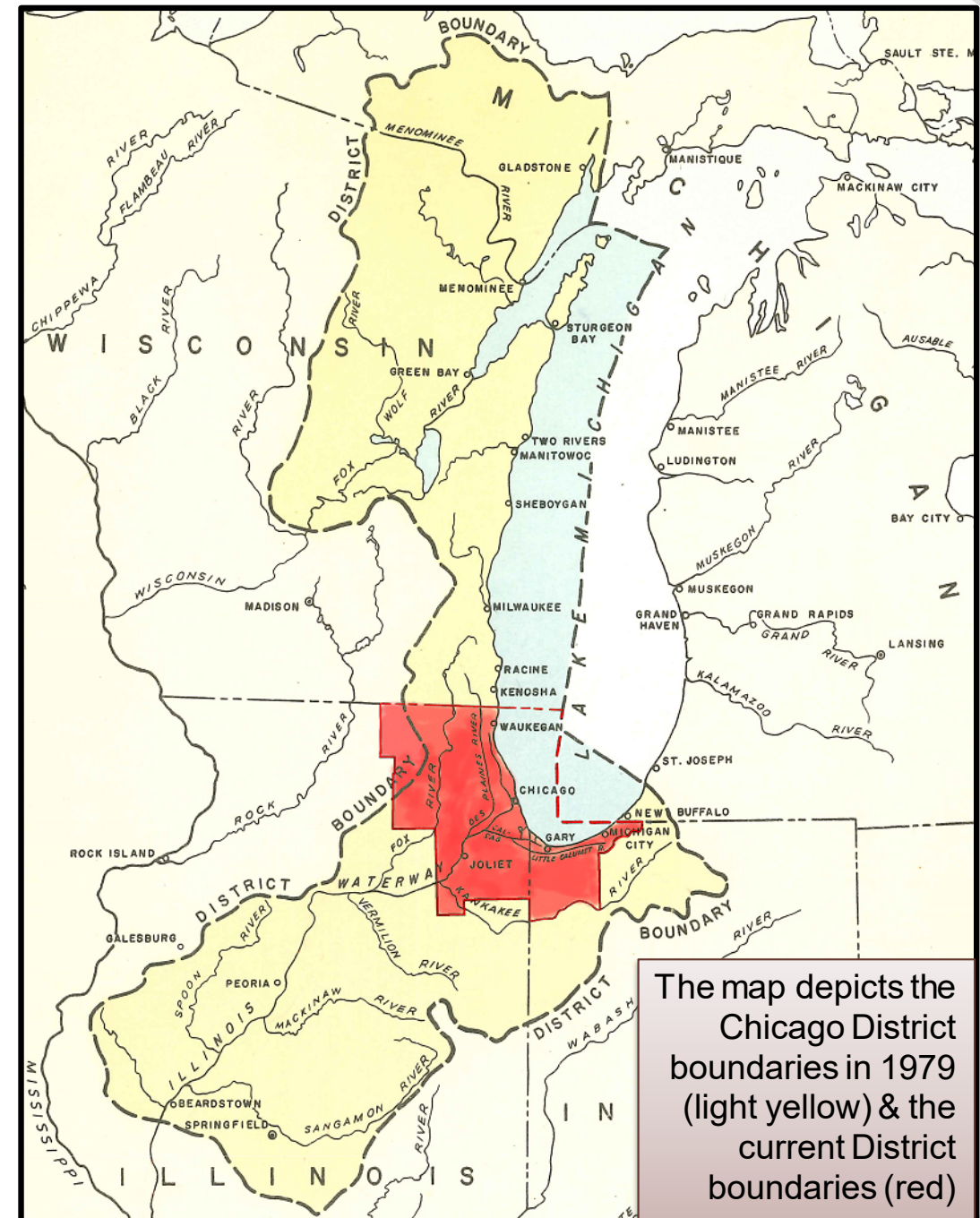
**US Army Corps
of Engineers®**

HISTORY

- Until 1980, Chicago District was responsible for **western Lake Michigan** and much of the **Illinois River watershed**.
- In 1979, North Central Division proposed to close Chicago District and split responsibility between Rock Island and Detroit Districts.
- With significant Congressional support, the District remained open, but **boundaries were significantly reduced**.

THE ILLINOIS WATERWAY

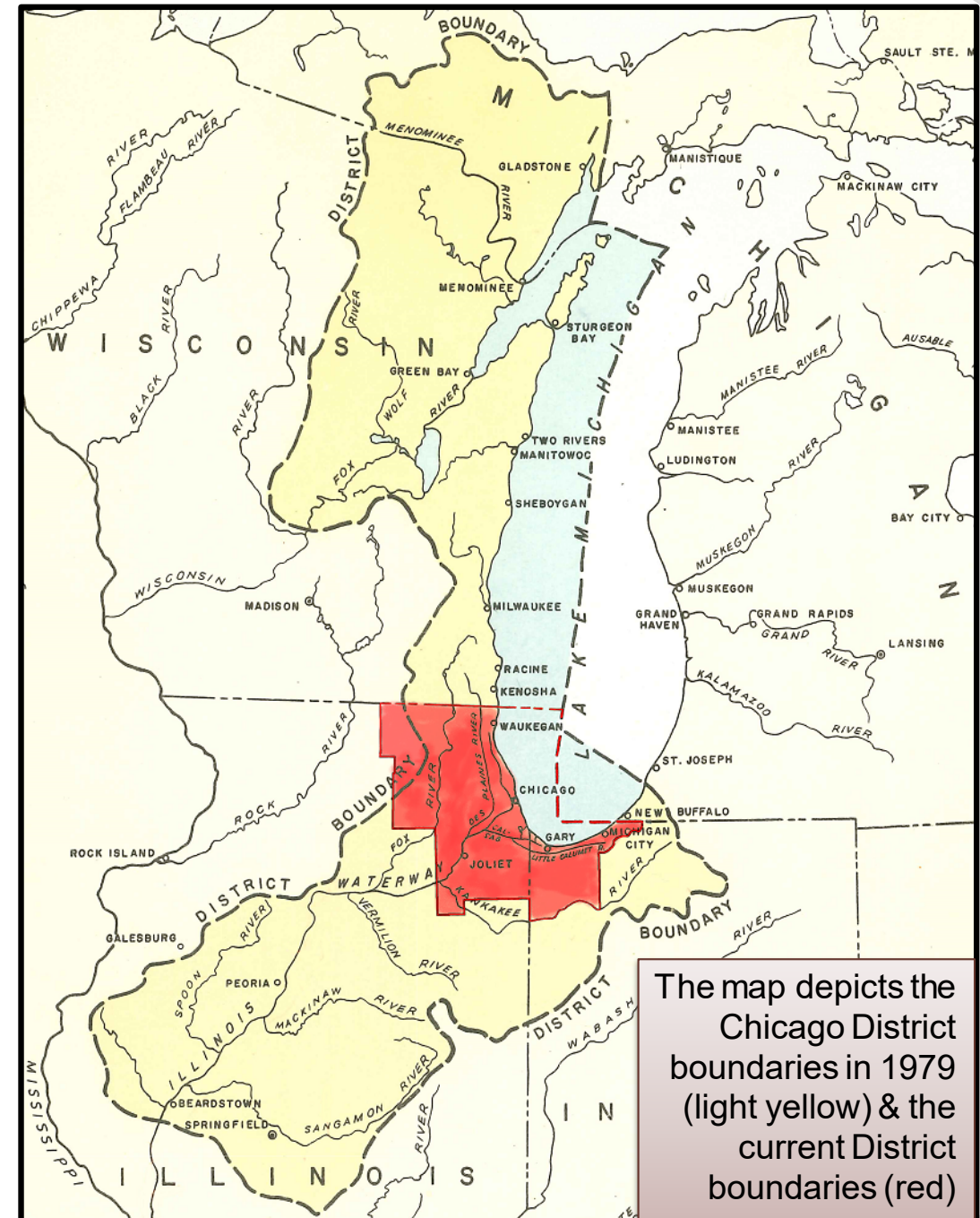
- Chicago District completed construction on all 8 locks and dams on the Illinois Waterway and operated them until 1980.
- At present MVR operates 3 projects within the Chicago District civil works boundary.



BACKGROUND & GOALS

During past annual reviews, we have observed an imbalance in workload, specifically:

- Many of Chicago District's major projects will be completed in the next year or two.
- Program sustainability is not a concern in neighboring districts.

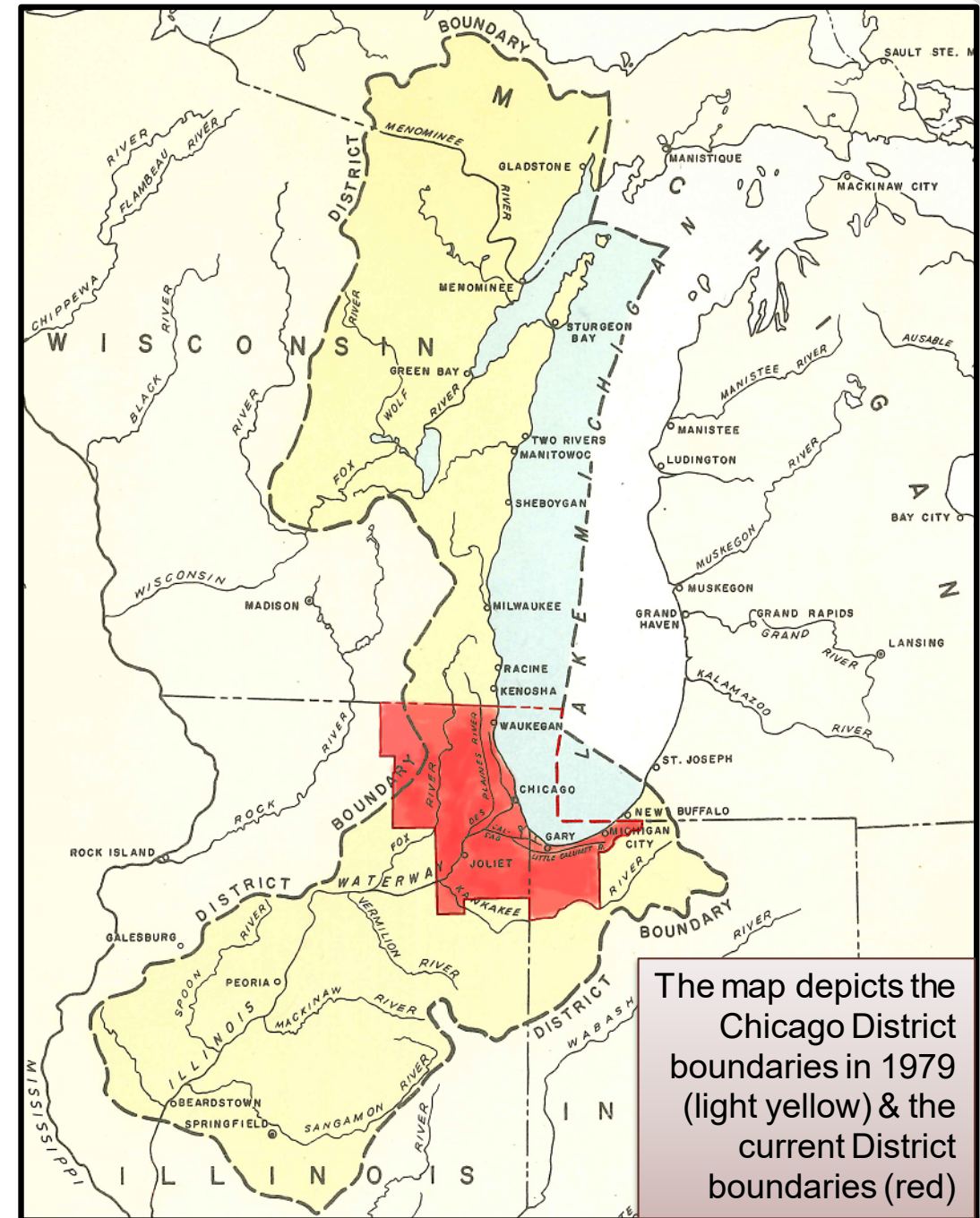


The map depicts the Chicago District boundaries in 1979 (light yellow) & the current District boundaries (red)

BACKGROUND & GOALS

USACE has developed a plan to achieve the following goals:

- Ensure an **enduring mission** across all districts.
- Maintain **expertise and competency** across the workforce.
- **Leverage regional capacity** in the delivery of quality projects.

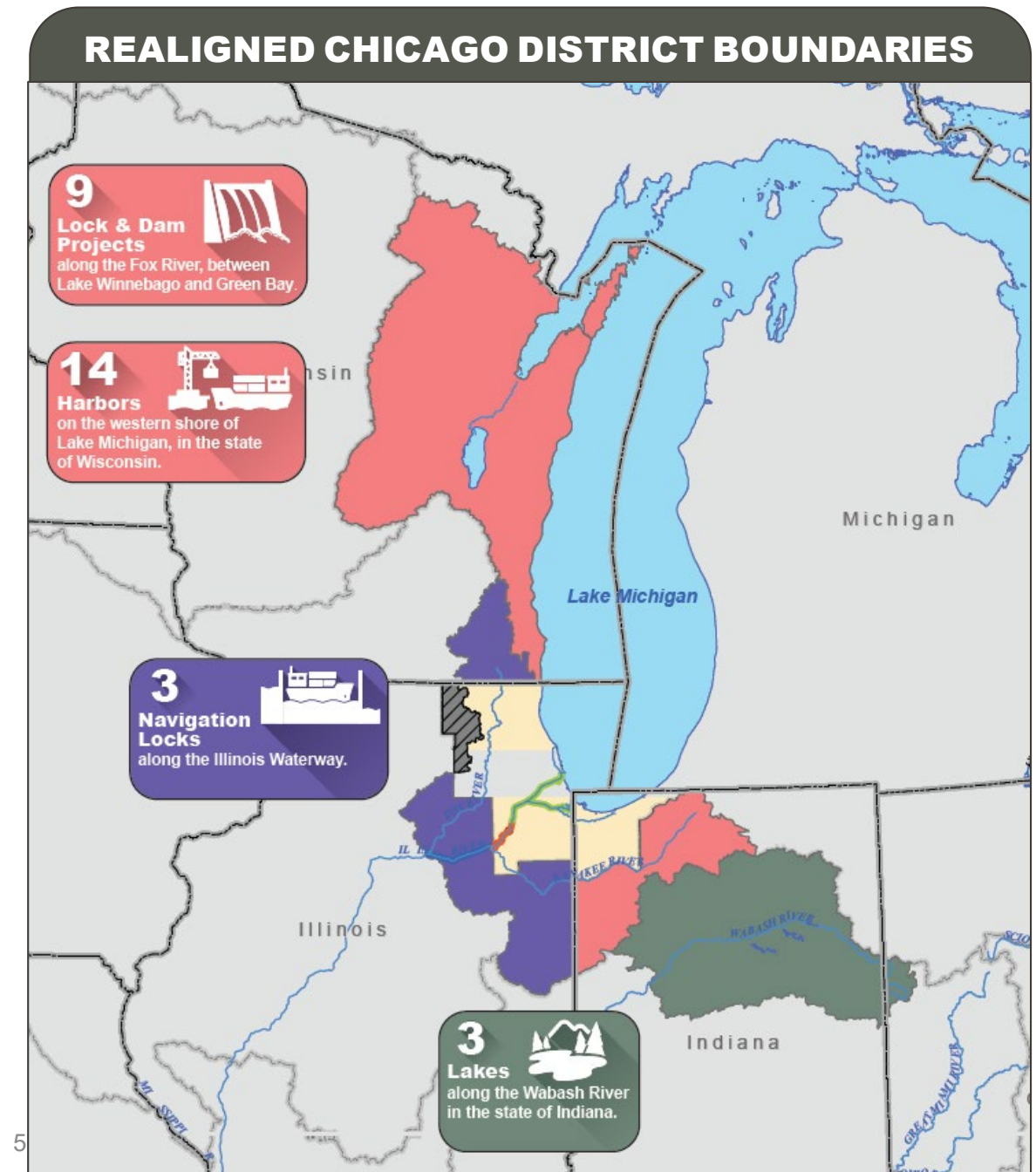


The map depicts the Chicago District boundaries in 1979 (light yellow) & the current District boundaries (red)

CIVIL WORKS MISSIONS TRANSFERRING TO CHICAGO

- The Lake Michigan watershed in Wisconsin;
- The Upper Wabash River watershed in Indiana;
- The Upper Kankakee River and Iroquois River watersheds in Indiana.
- **Inland waterways infrastructure (locks & dams, federal navigation channel) within the existing Chicago District boundaries;** and
- The headwaters of the Illinois River, to include the remainder of the Fox and Kankakee River watersheds.

Additionally, a new construction design team will be established within the Chicago District. These changes will move Chicago District back toward its historical geographic boundaries.



STRENGTHENING THE FOUNDATION

COMMITMENTS

The Corps is committed to our region, our projects, and our partners.



Delivery of Quality Products

Work will continue on current and planned projects. Ongoing and future work will be delivered **on time** and **within budget**.



Valued Partnerships

Existing relationships will remain intact, as field personnel will not be moved.

BENEFITS



More dedicated attention for major projects.



Unified aquatic invasive species defense.



Increased leadership capacity.



Enhanced regional technical competency.

PROXIMITY

The transfer of work will bring people, projects, and partners closer to the Corps than ever before.



District leadership will be **closer to those they serve**, including concerned citizens and government officials.



Field offices & projects will be closer to centralized mission support.

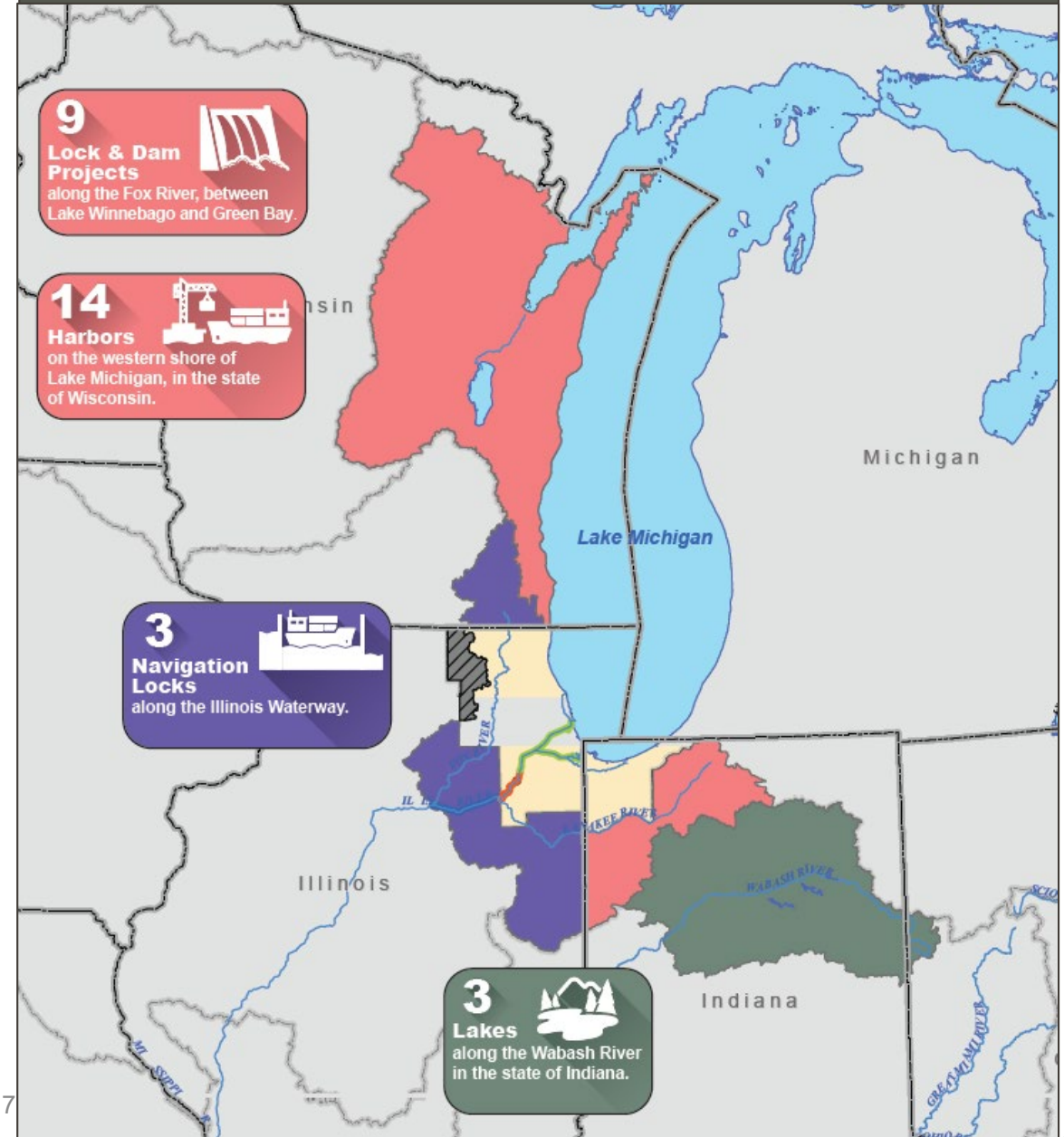


Employees will spend **less time on the road and more time on the job**.

ILLINOIS WATERWAY: INTO THE FUTURE

- **Brandon Road Lock & Dam** will remain with the Rock Island District through the completion of the future **Great Lakes & Mississippi River Inter-basin Study** construction project.
- **Dresden and Marseilles** locks may be reevaluated in 2022, in light of District viability.

REALIGNED CHICAGO DISTRICT BOUNDARIES



ILLINOIS WATERWAY: NAVIGATION

- Navigation along the waterway **will continue as usual.**
- The same personnel will operate the locks.

2020 CONSOLIDATED CLOSURE

- The work or schedule during the 2020 closure will not be impacted.
 - None of the locks impacted by the consolidated closure are being transferred.
 - Personnel will continue to support the closure where applicable.



CONTACTING THE LOCKS

