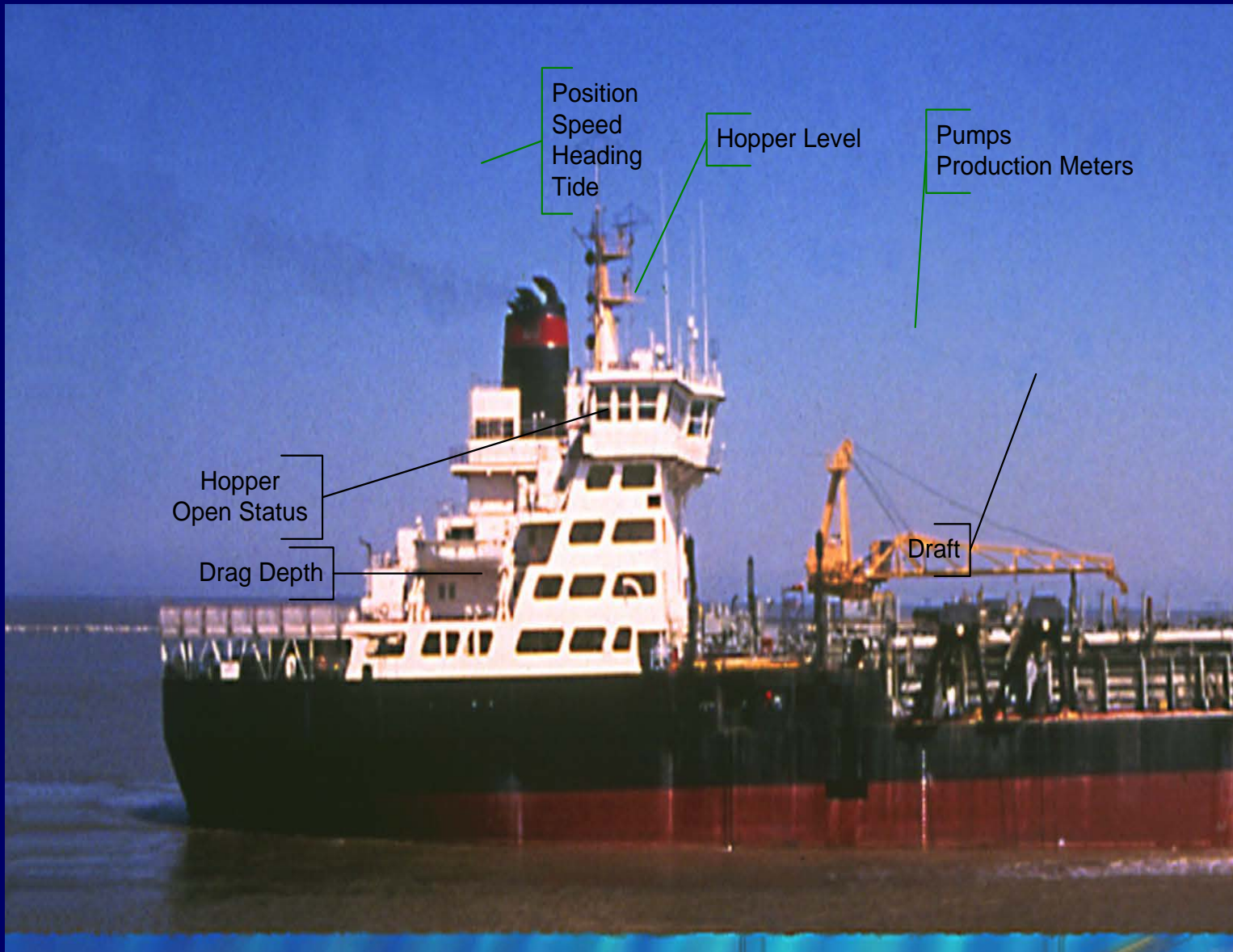


Silent Inspector National Implementation

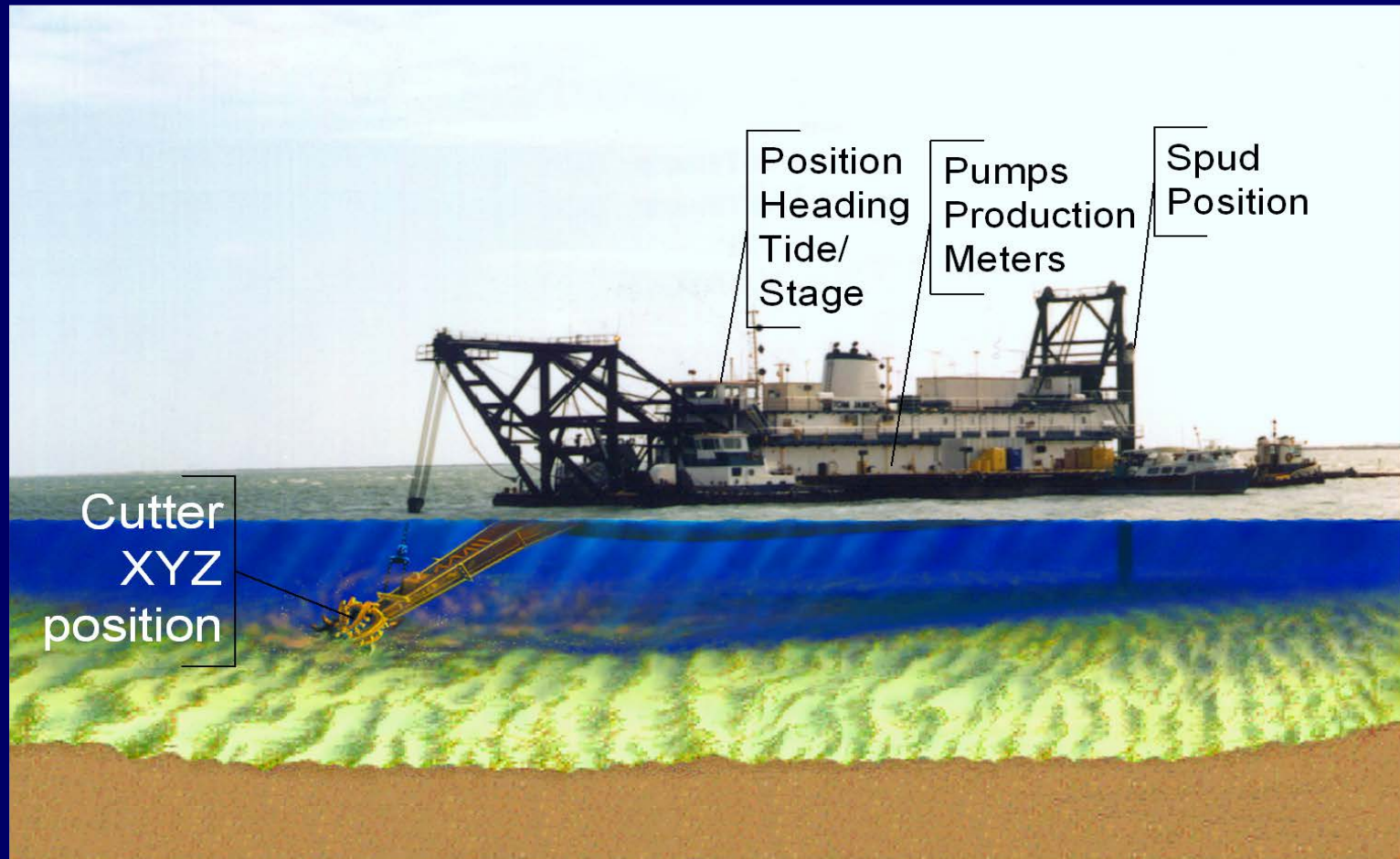
- Implementation strategy
- Questions and Issues
- Guidance document



Hopper SI Measurements



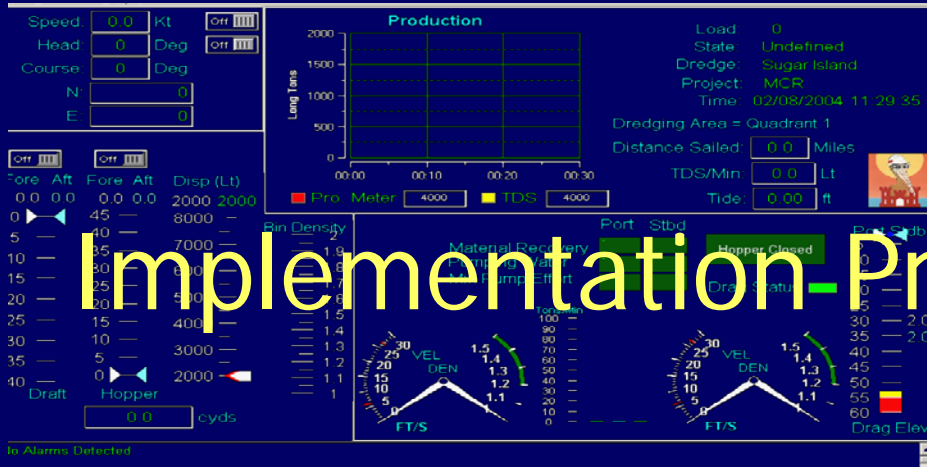
Pipeline Dredge Sensors



Scow Sensors

- **No GF software required**
- **Contractor implements entire system**
- **3 Profiles**
 - **Tracking – GPS & hull open/closed**
 - **Monitoring – Add draft**
 - **TDS – Adds Ullage**
- **Low cost compliant system based on truck location technology.**





Implementation Principles

- Partnership with Dredging Industry
- Report the Contractor's Data
- Performance based specification
- Rigorous Data Quality Assurance

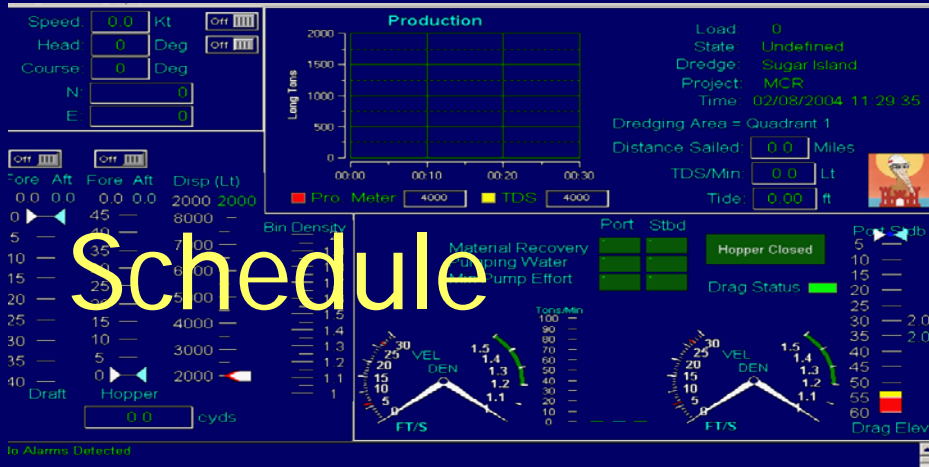




Always-On Dredge Monitoring

- All Hoppers
 - Include all Government Hoppers
- All Scows
 - Minimum of **Tracking Profile**
 - **Monitoring or TDS Profile** specified by ODMP
- Pipelines > 30", + *Goetz & Oregon*
- Mechanical dredges TBD

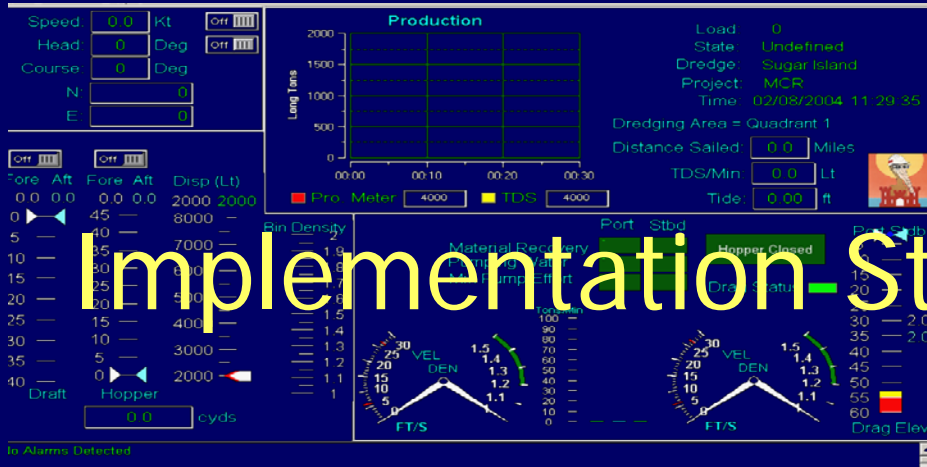




Schedule



| FY | 2006 | 2007 | 2008 | 2009 |
|-------------------|------------------|------------|-----------|-----------|
| Hopper | Always-on | Always-on | Always-on | Always-on |
| Scow | Always-on | Always-on | Always-on | Always-on |
| Pipeline | Goetz, Oregon | 4 – > 30in | All > 30" | All > 18" |
| Mechanical | TBD | TBD | TBD | TBD |



Implementation Strategy

- Immediate
 - Guidance document
- Near-Term
 - ER, EP ammendments
 - Board of Directors
- Medium-Term
 - Improved dredging efficiency
 - Regulatory relief

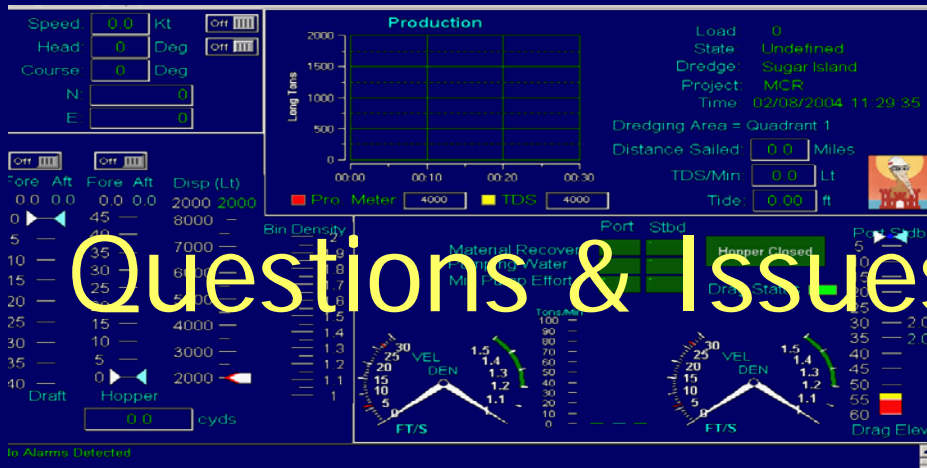




Questions & Issues a-d

- Impact on existing EPA mandated scow monitoring & methods?
 - No immediate changes are required
 - Add SI reporting spec
- Will agencies trust the data?
 - Contractor/SubContractor is still the data provider
 - SI adds Corps QC and data access

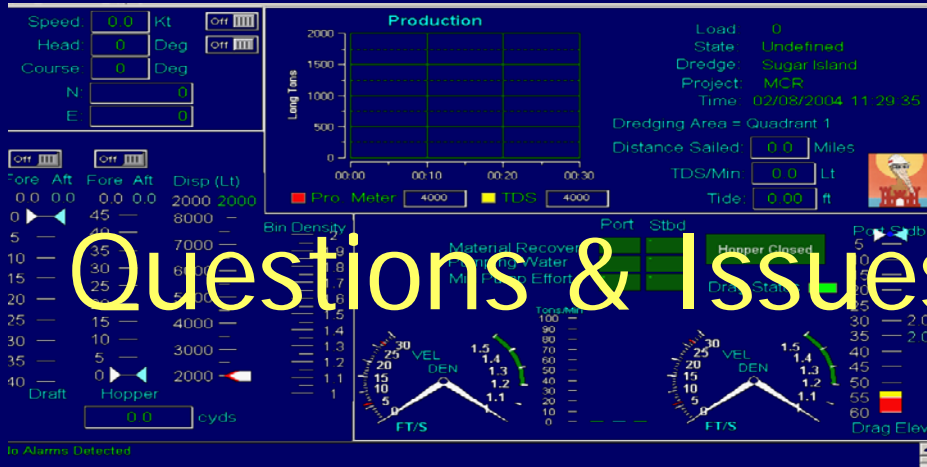




Questions & Issues .b

- What about track plot reporting to EPA?
 - Initially maintain current process
 - GIS based national standard will be tested in SAD
- What about scows that unload in CDFs?
 - Require SI tracking profile to assure **always-on**.
 - Require contractor to manually signal new load
- Are there GE and GFE requirements on districts?
 - No.

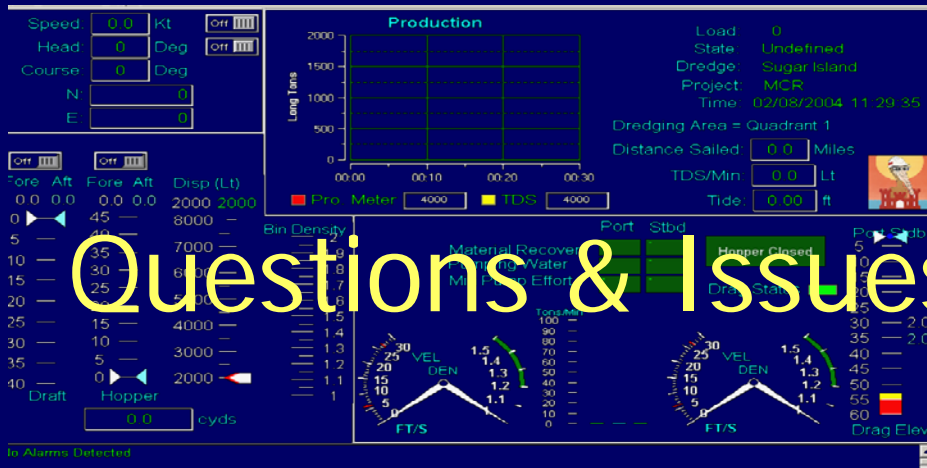




Questions & Issues .c

- What about other EPA/Fisheries special conditions?
 - Maintain requirements in contract specifications.
 - Future effort to standardize and reduce manual reporting requirements.
- What about SI impact on small 8a mechanical and pipeline plant?
 - BoD will set lower size limits.
 - Continue non-adversarial consultation with industry.
 - Use market forces and Moore's law to reduce costs.
- Is it "legal" to require monitoring on permit jobs?
 - Yes.



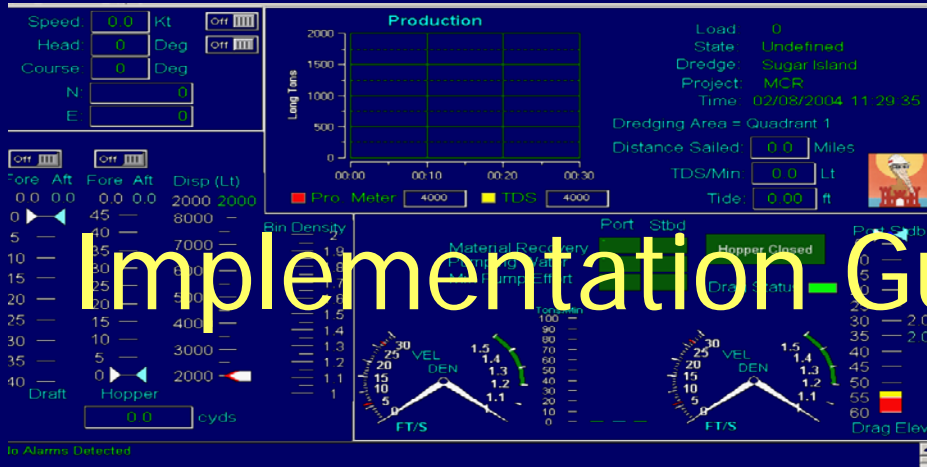


Questions & Issues .d

- How do variations in sediment properties affect production estimates?
 - Most repeatable measurement is mass.
 - Traditional measures are volumes.
 - Vol (in-situ) \neq Vol (hopper) \neq Vol (Disposal)
 - Site/Reach specific conversions are supported by SI

- What steps will be taken to protect data storage from storm damage or other loss.
 - Secondary site, redundancy.
 - Audited backup procedures.

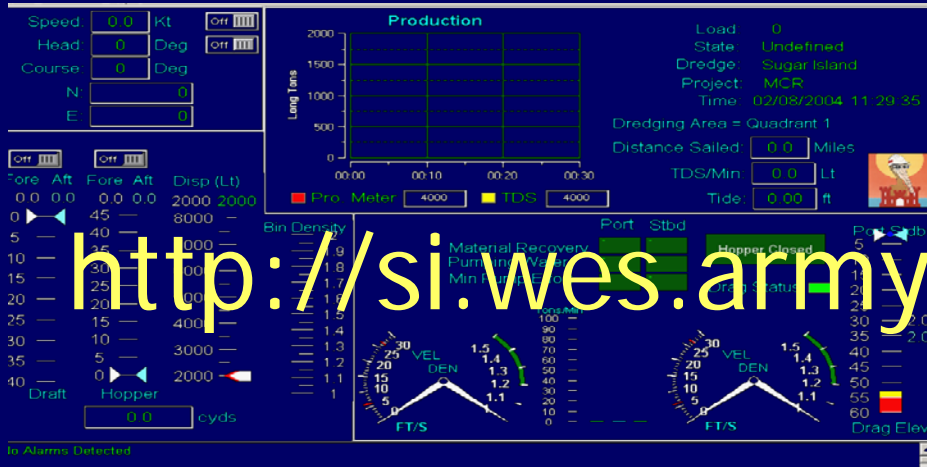




Implementation Guidance

- Vs. 1.3 June 2006 available for comment
- Division/ district POCs
- Desktop software installation
- Training
- Regulatory language
- GIS integration
- Resource Management





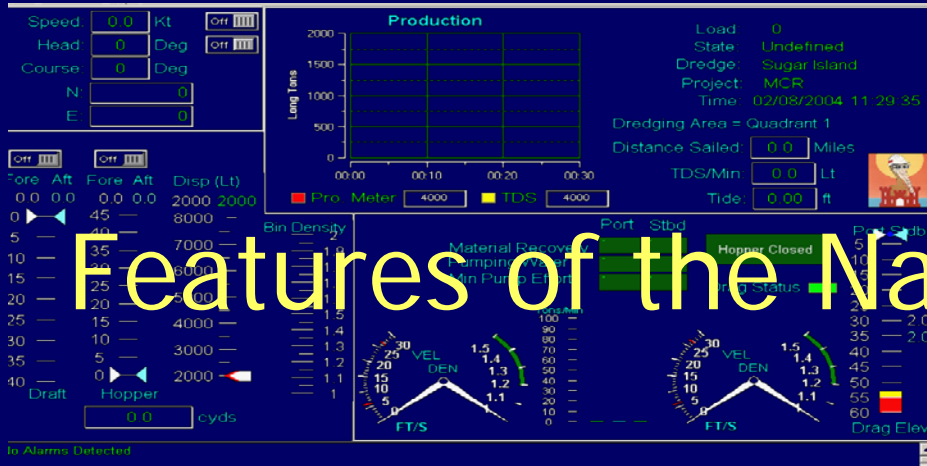
<http://si.wes.army.mil/>



- Gary Howell – 601-634-2006
- James (Jay) Rosati – 601-634-2022
- Tim Welp – 601-634-2083
- Rhonda Lenoir – 601-634-2923



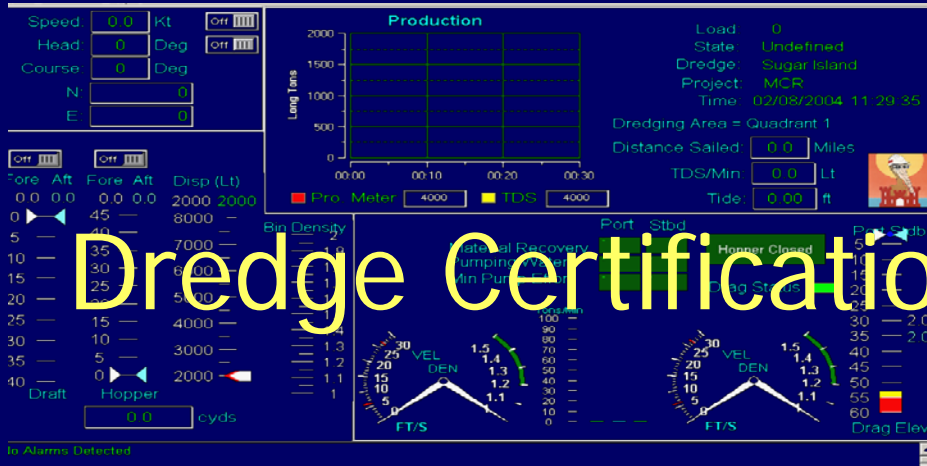
| Function | Oversight & Funding |
|--|-------------------------|
| Routine Operations, Support & Training | HQOP (funding) SAMOP |
| R&D for continuous improvement | ERDC - DOER |
| Virtual Team of Teams | Board of Directors |



Features of the National Plan

- Expanded Project Monitoring
- Include Regulatory
- Expanded Dredge types
- Simplify Dredge SI Certification
- Centralized Support under Operations
- Regional & National Stakeholders





Dredge Certification

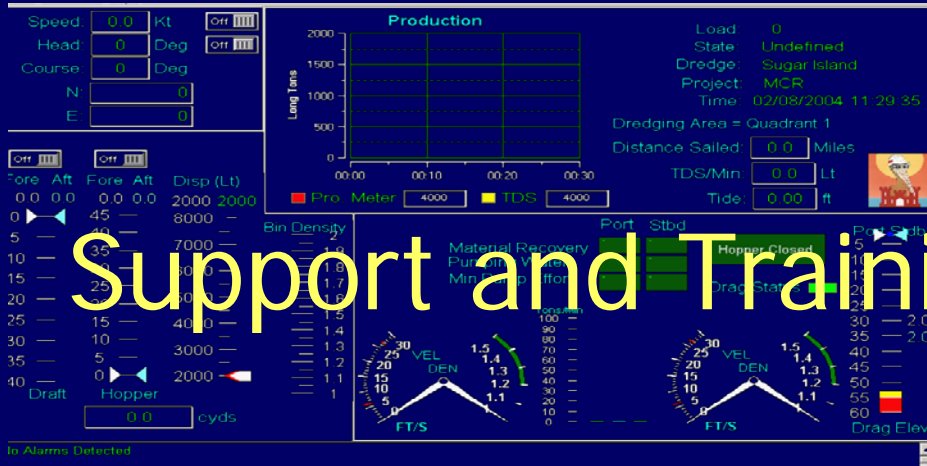
■ Current Process

- Certification Inspection by SI QA engineer
- Letter from District CO
- Not strictly transferable
- No Continuing Control

■ New Process

- Inspection w/o contract
- National Certification Letter
- Web page with Certification list
- Resourced by National team

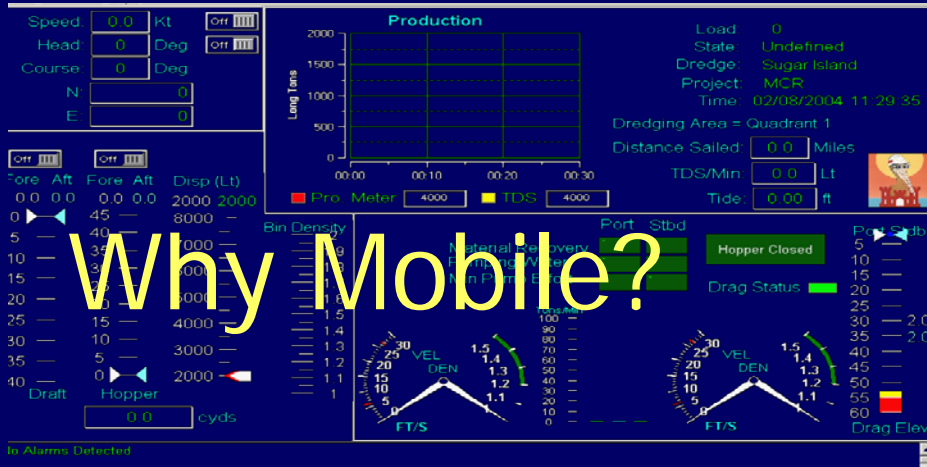




Support and Training

- Resourced by National Team
- Regional/Division training
- Integrate with QAR course
- Central Support team under Mobile District Operations
- Database Maintenance

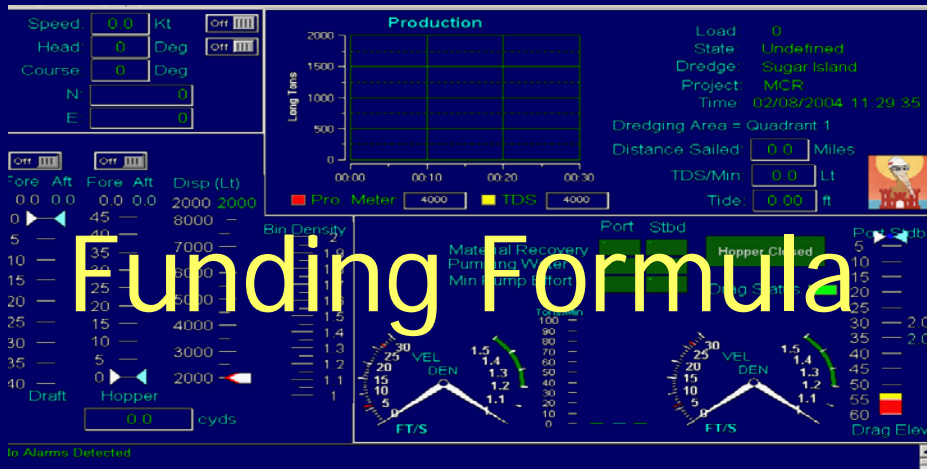




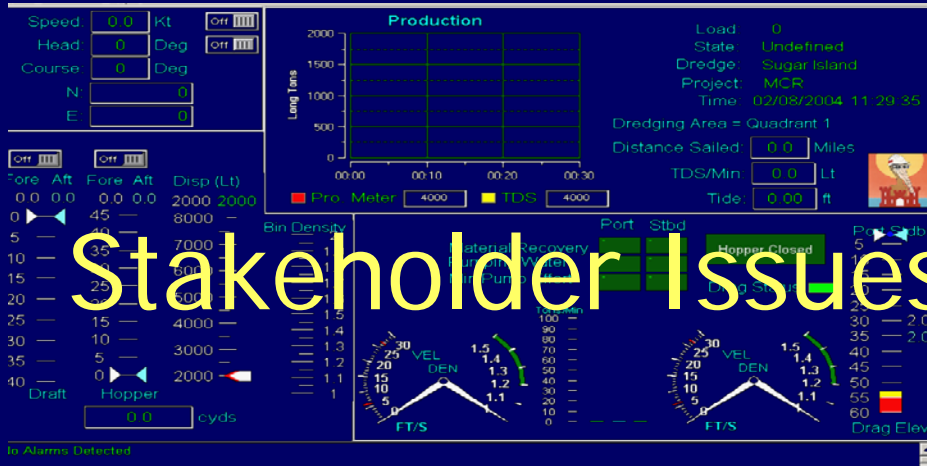
Why Mobile?



- 6 Years SI monitoring of contracts
- Experience with Ops, R&D, & IM teaming
- Required IT infrastructure in place



- Resource for the National Team and National functions
- Formula = 0.875% of Dredging Contract
- Plan to resource with P2 template



- T&E – Turtles & Sturgeon
- Overdepth
- Open Water Disposal Monitoring
- Emergency Response Rentals
- Regionalization
- eGIS, eCoastal, RSM integration
- Decision Support – DODSS