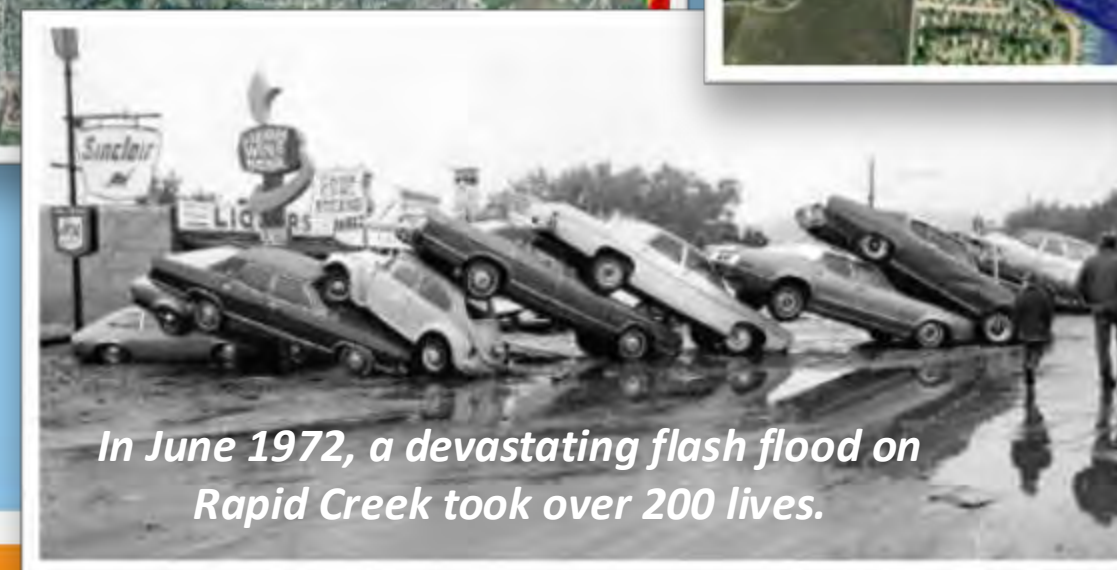
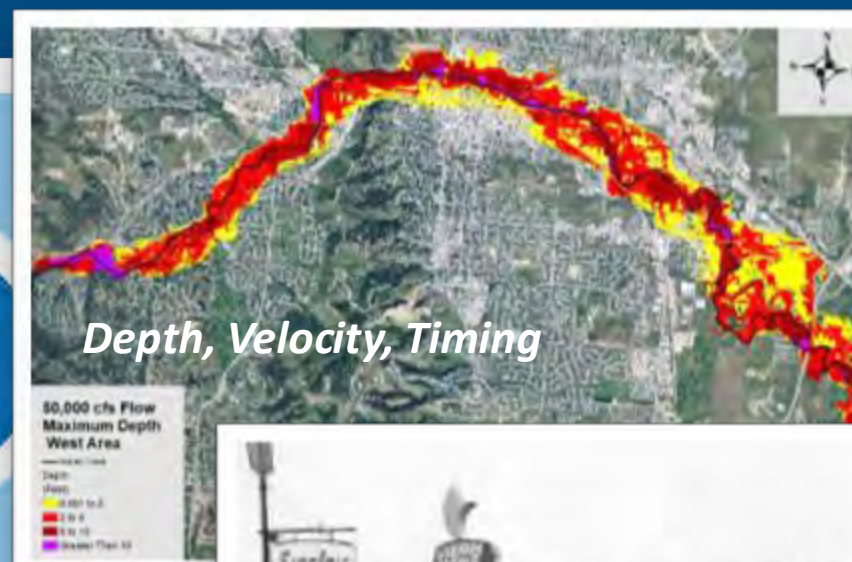




MORE THAN INUNDATION MAPS

Hydraulic and consequences analyses of the flood risk along Rapid Creek through Rapid City, South Dakota

- The South Dakota Silver Jackets (SDSJ) Team partnered with the city of Rapid City and Pennington County to conduct a LifeSim consequence analysis supported by a HEC-RAS 2D hydraulic model to assess life safety risk on Rapid Creek in this increasingly growing region.
- The local emergency manager was interviewed on current emergency action plans and procedures to define LifeSim parameters unique to Rapid City.
- The SDSJ Team presented findings to local first responders and city and county officials sharing inundation maps and animations, arrival times, potential life loss locations, and recommendations on emergency action procedures.
- Known locations of unhoused populations that may take shelter under bridges were included in the LifeSim analysis improving local emergency warning practices.
- The project identified high risk areas on roads and in structures and identified stream flows when major bridges would be impacted.



SOUTH DAKOTA SILVER JACKETS TEAM PROJECT PARTNERS



US Army Corps of Engineers®